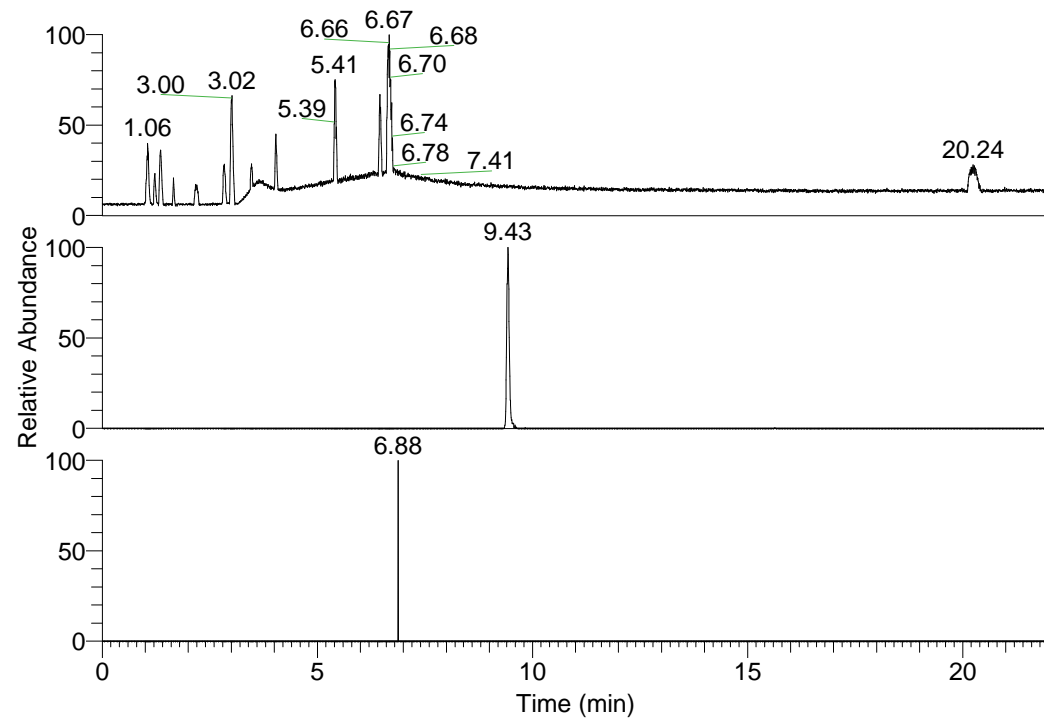


RT: 0.00 - 22.01



NL: 1.25E8
Base Peak m/z=
100.00000-1500.00000 F:
FTMS + p ESI Full ms
[100.00-1500.00] MS
Pluctuosa_HDX

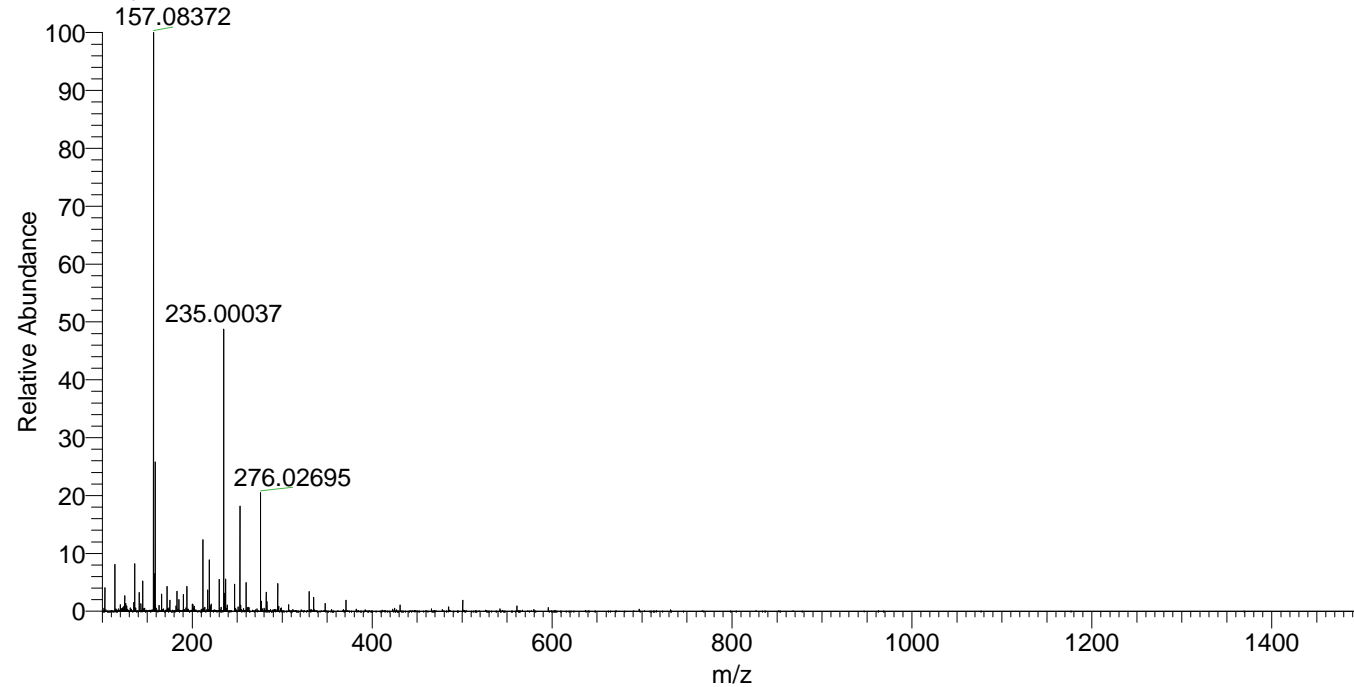
NL: 6.30E5
Base Peak m/z=
282.20745-282.21027 F:
FTMS + p ESI Full ms
[100.00-1500.00] MS
Pluctuosa_HDX

NL: 3.63E3
Base Peak m/z=
142.11077-142.11219 F:
FTMS + p ESI Full ms
[100.00-1500.00] MS
Pluctuosa_HDX

Pluctuosa_HDX#1523 RT: 9.43
T: FTMS + p ESI Full ms [100.00-1500.00]
m/z= 282.00000-283.00000

m/z	Intensity	Relative	Delta (ppm)	Composition
282.20850	630422.9	100.00	0.65	C ₁₅ H ₁₆ ² H ₆ O ₂ N ₃
			-4.84	C ₁₅ H ₁₈ ² H ₅ O ₂ N ₃

Pluctuosa_HDX #1523 RT: 9.43 AV: 1 NL: 1.93E7
T: FTMS + p ESI Full ms [100.00-1500.00]



Pluctuosa_HDX #1523 RT: 9.43 AV: 1 NL: 3.95E6
T: FTMS + p ESI Full ms [100.00-1500.00]

