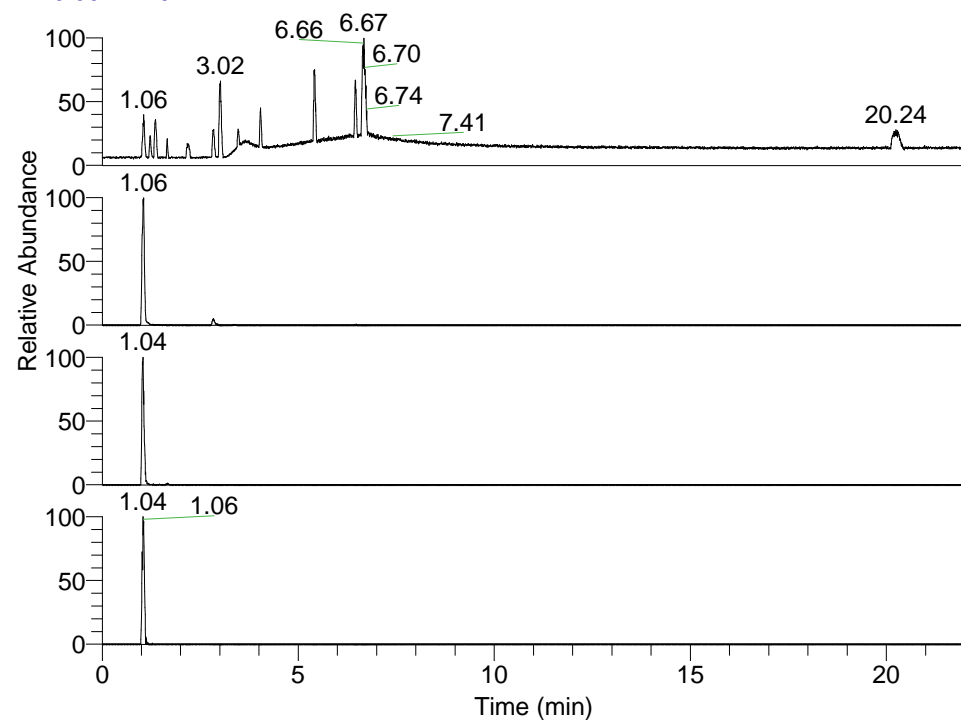


RT: 0.00 - 22.01



NL: 1.25E8
 Base Peak m/z=
 100.00000-1500.00000 F: FTMS + p
 ESI Full ms [100.00-1500.00] MS
 Pluctuosa_HDX

NL: 7.17E6
 Base Peak m/z=
 263.30996-263.31260 F: FTMS + p
 ESI Full ms [100.00-1500.00] MS
 Pluctuosa_HDX

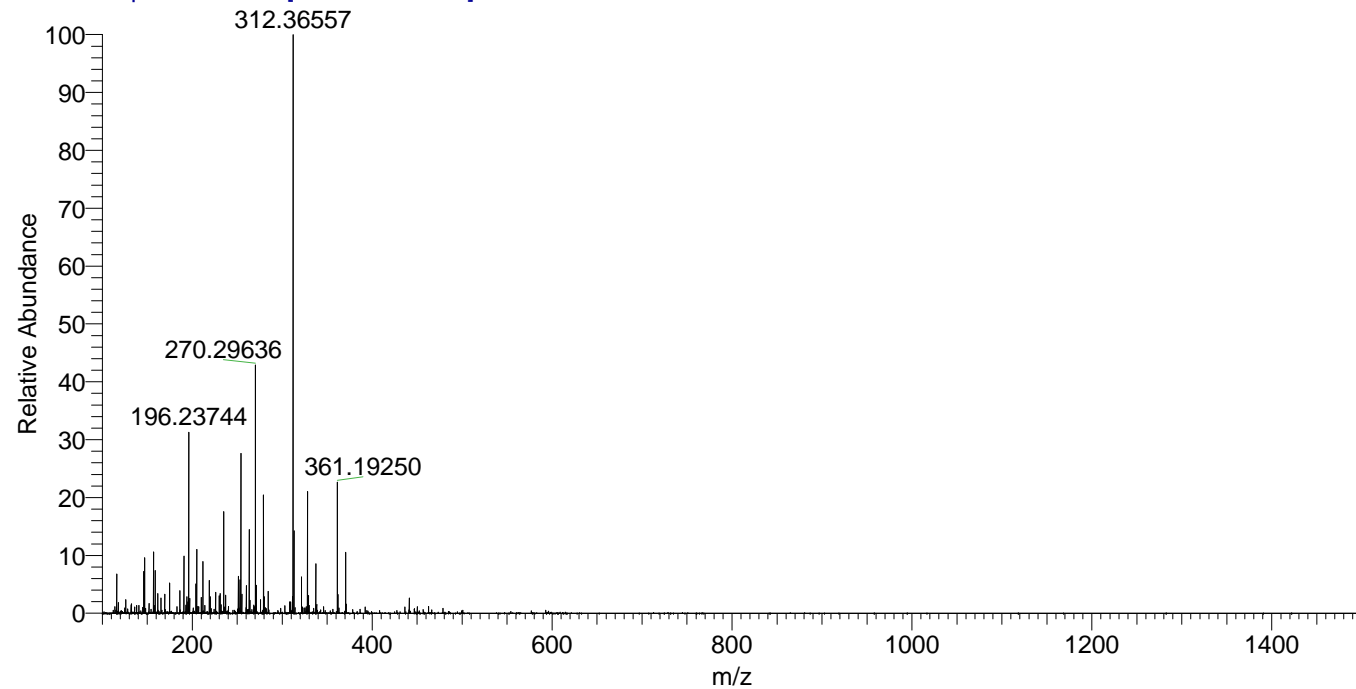
NL: 1.03E6
 Base Peak m/z=
 132.66203-132.66335 F: FTMS + p
 ESI Full ms [100.00-1500.00] MS
 Pluctuosa_HDX

NL: 3.12E5
 Base Peak m/z=
 378.30853-378.31231 F: FTMS + p
 ESI Full ms [100.00-1500.00] MS
 Pluctuosa_HDX

Pluctuosa_HDX#160 RT: 1.06
 T: FTMS + p ESI Full ms [100.00-1500.00]
 m/z= 263.00000-264.00000

m/z	Intensity	Relative	Delta (ppm)	Composition
263.31094	6708059.0	100.00	0.81	C ₁₄ H ₃₁ ² H ₄ N ₄

Pluctuosa_HDX #160 RT: 1.06 AV: 1 NL: 4.48E7
 T: FTMS + p ESI Full ms [100.00-1500.00]



Pluctuosa_HDX #160 RT: 1.06 AV: 1 NL: 1.92E7
 T: FTMS + p ESI Full ms [100.00-1500.00]

