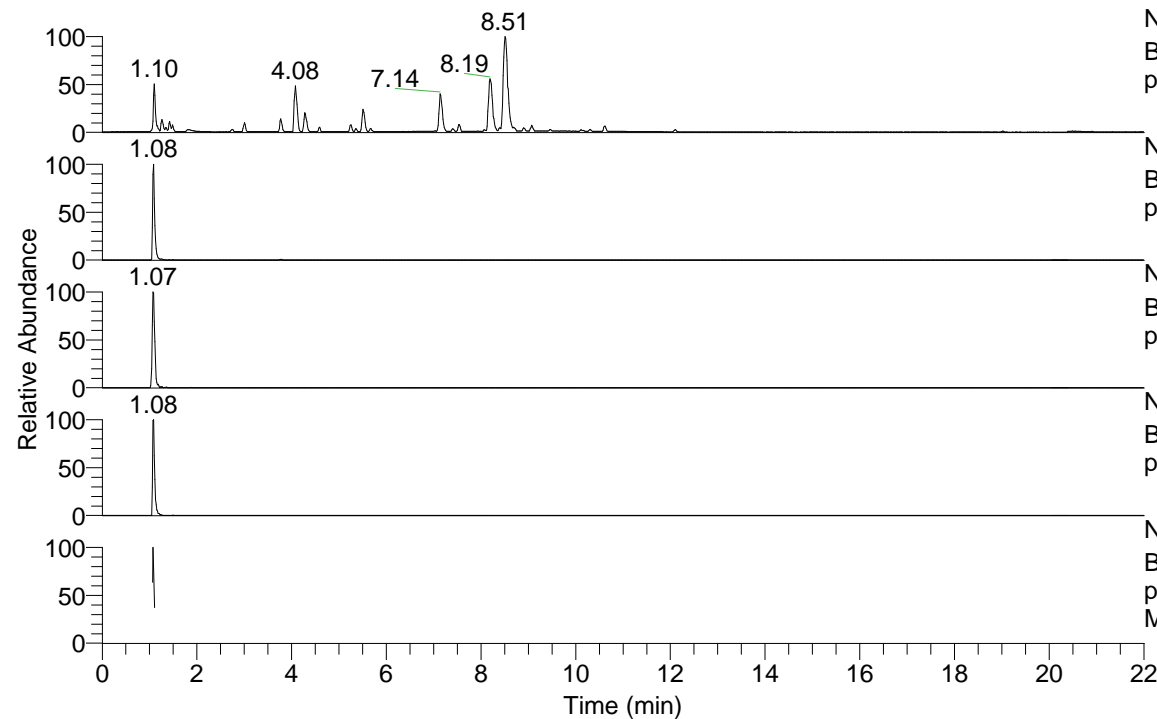


RT: 0.00 - 22.01



NL: 7.88E7
 Base Peak m/z= 100.00000-1500.00000 F: FTMS +
 p ESI Full ms [100.00-1500.00] MS Pbirulai

NL: 1.03E7
 Base Peak m/z= 259.28358-259.28876 F: FTMS +
 p ESI Full ms [100.00-1500.00] MS Pbirulai

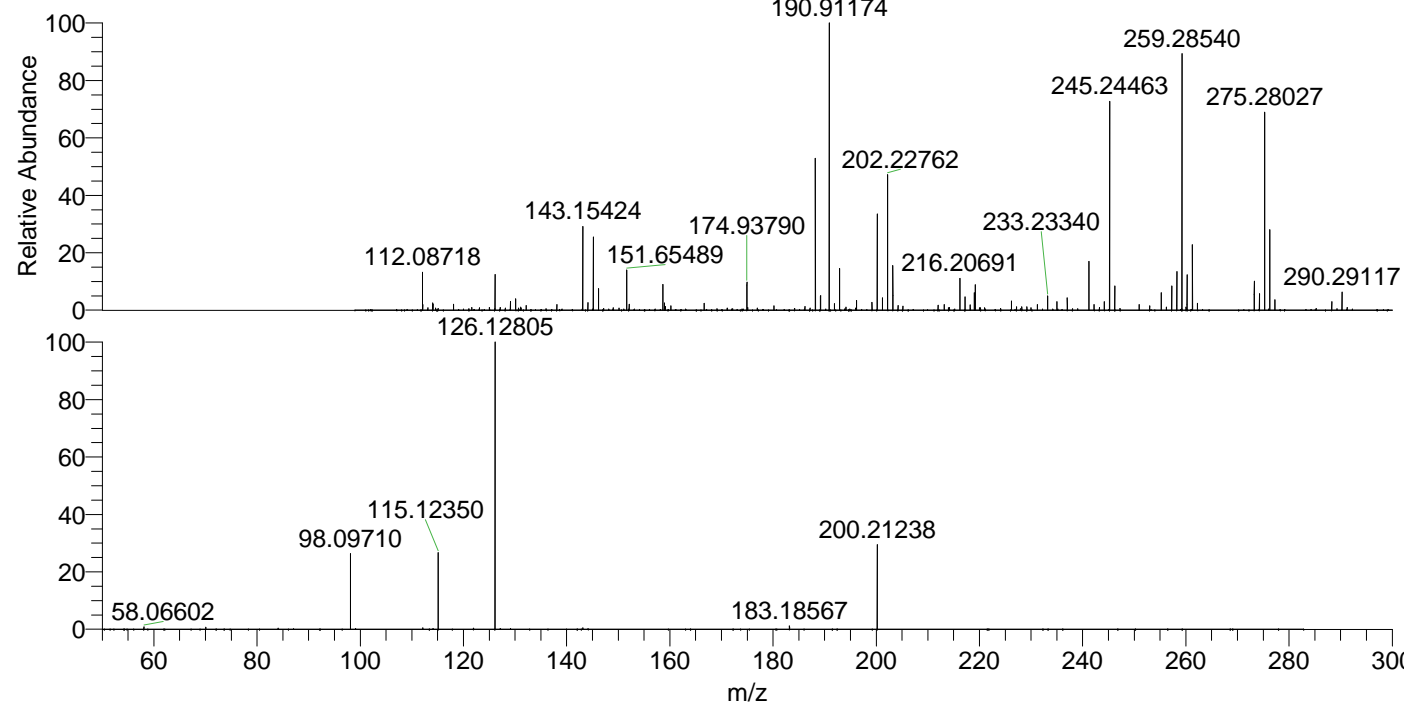
NL: 4.65E5
 Base Peak m/z= 130.14570-130.14830 F: FTMS +
 p ESI Full ms [100.00-1500.00] MS Pbirulai

NL: 4.63E5
 Base Peak m/z= 373.27531-373.28277 F: FTMS +
 p ESI Full ms [100.00-1500.00] MS Pbirulai

NL: 4.41E6
 Base Peak m/z= 50.00000-1500.00000 F: FTMS +
 p ESI d Full ms2 259.29@hcd35.00 [50.00-280.00]
 MS Pbirulai

Pbirulai#424-444 RT: 1.06-1.11 AV: 4
 F: FTMS + p ESI d Full ms2 259.29@h ...
 m/z= 50.00000-1000.00000

m/z	Intensity	Relative
58.06602	24206.3	0.84
70.06603	22539.0	0.78
98.09710	774979.7	26.87
112.11256	15210.5	0.53
115.12350	774016.6	26.83
126.12805	2884551.0	100.00
183.18567	34327.5	1.19
200.21238	848131.2	29.40



NL: 1.14E7
 Pbirulai#433 RT: 1.08
 AV: 1 T: FTMS + p ESI
 Full ms [100.00-1500.00]

NL: 2.87E6
 Pbirulai#422-445 RT:
 1.06-1.11 AV: 4 F: FTMS
 + p ESI d Full ms2
 259.29@hcd35.00
 [50.00-280.00]