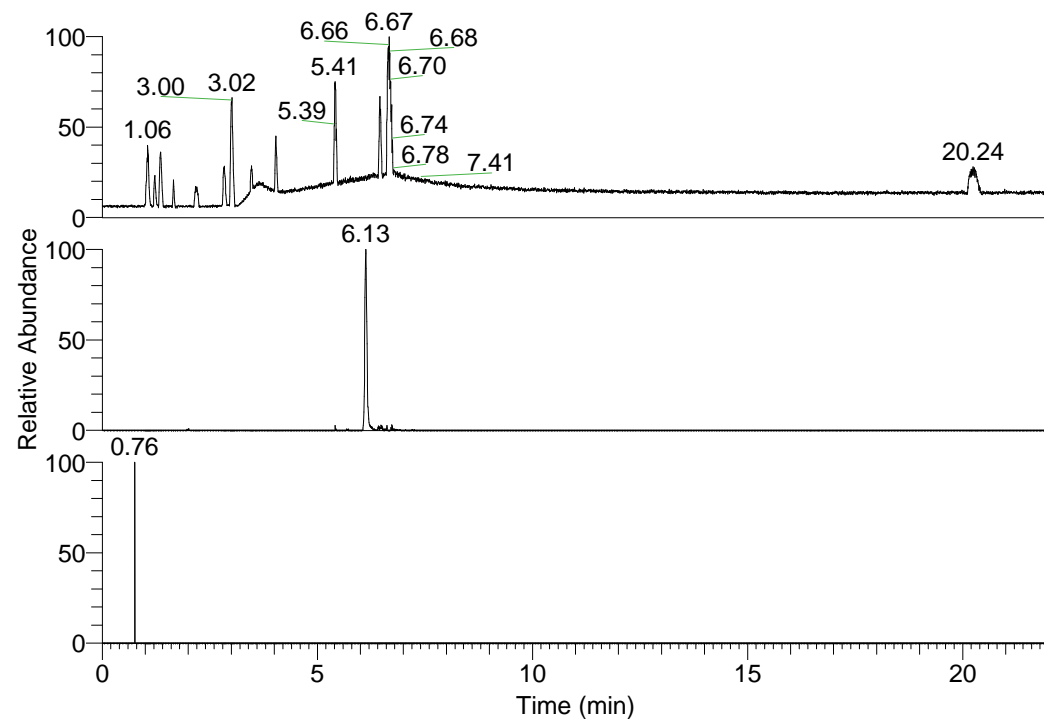


RT: 0.00 - 22.01



NL: 1.25E8
 Base Peak m/z=
 100.00000-1500.00000 F:
 FTMS + p ESI Full ms
 [100.00-1500.00] MS
 Pluctuosa_HDX

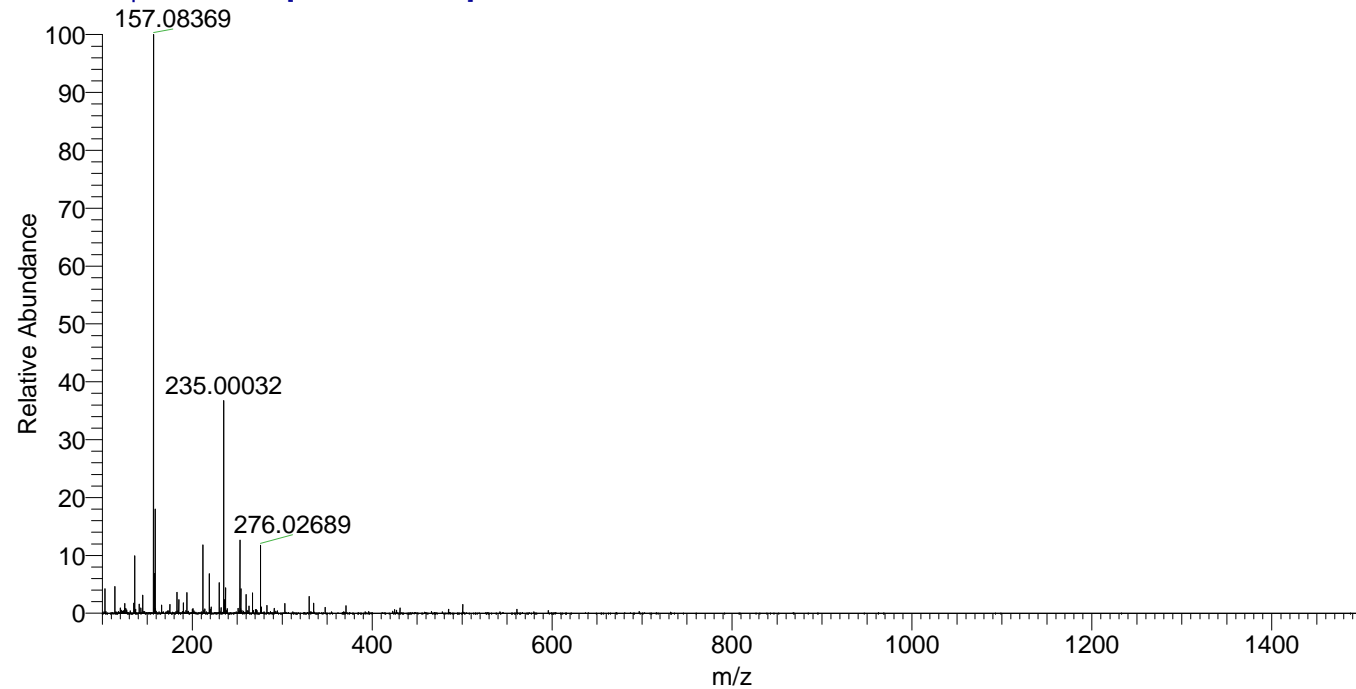
NL: 1.13E6
 Base Peak m/z=
 254.17629-254.17883 F:
 FTMS + p ESI Full ms
 [100.00-1500.00] MS
 Pluctuosa_HDX

NL: 1.53E3
 Base Peak m/z=
 128.09519-128.09647 F:
 FTMS + p ESI Full ms
 [100.00-1500.00] MS
 Pluctuosa_HDX

Pluctuosa_HDX#975 RT: 6.13
 T: FTMS + p ESI Full ms [100.00-1500.00]
 m/z= 254.00000-255.00000

m/z	Intensity	Relative	Delta (ppm)	Composition
254.17714	1127215.4	100.00	0.49	C ₁₃ H ₁₂ ² H ₆ O ₂ N ₃

Pluctuosa_HDX #975 RT: 6.13 AV: 1 NL: 2.64E7
 T: FTMS + p ESI Full ms [100.00-1500.00]



Pluctuosa_HDX #975 RT: 6.13 AV: 1 NL: 3.33E6
 T: FTMS + p ESI Full ms [100.00-1500.00]

