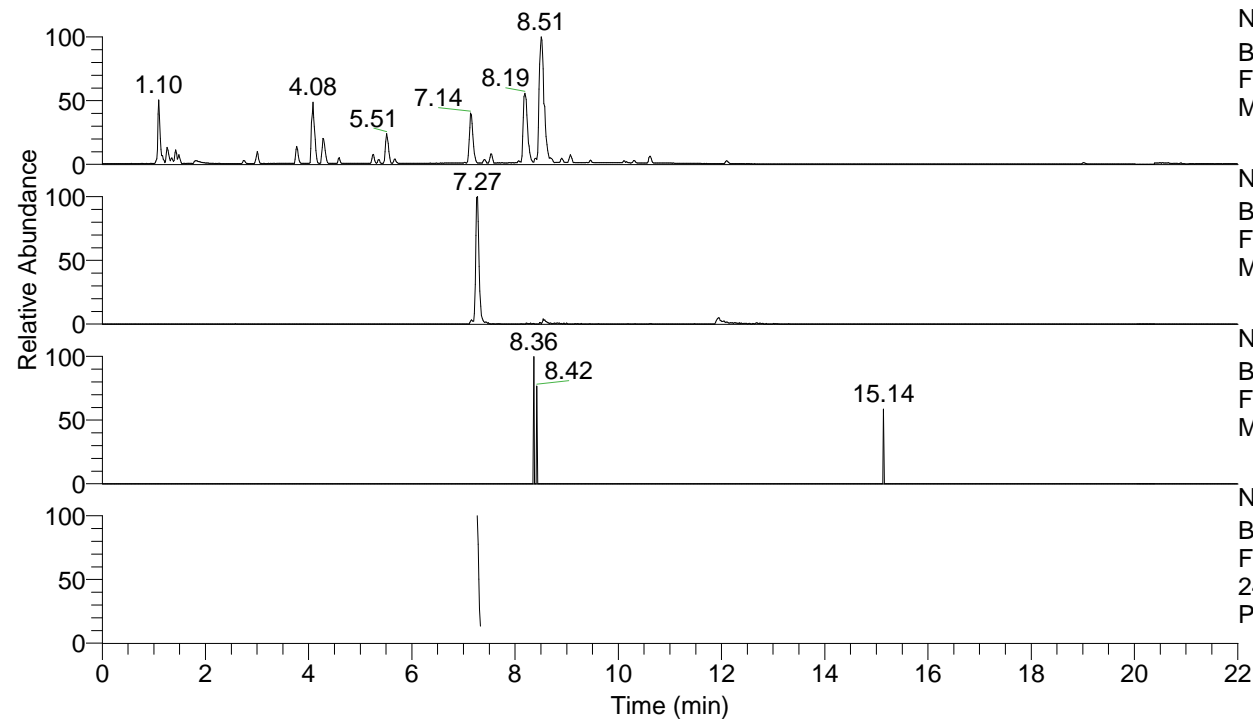


RT: 0.00 - 22.01



NL: 7.88E7  
 Base Peak m/z= 100.00000-1500.00000 F:  
 FTMS + p ESI Full ms [100.00-1500.00]  
 MS Pbirulai

NL: 6.33E5  
 Base Peak m/z= 248.13742-248.14238 F:  
 FTMS + p ESI Full ms [100.00-1500.00]  
 MS Pbirulai

NL: 1.67E3  
 Base Peak m/z= 124.57261-124.57511 F:  
 FTMS + p ESI Full ms [100.00-1500.00]  
 MS Pbirulai

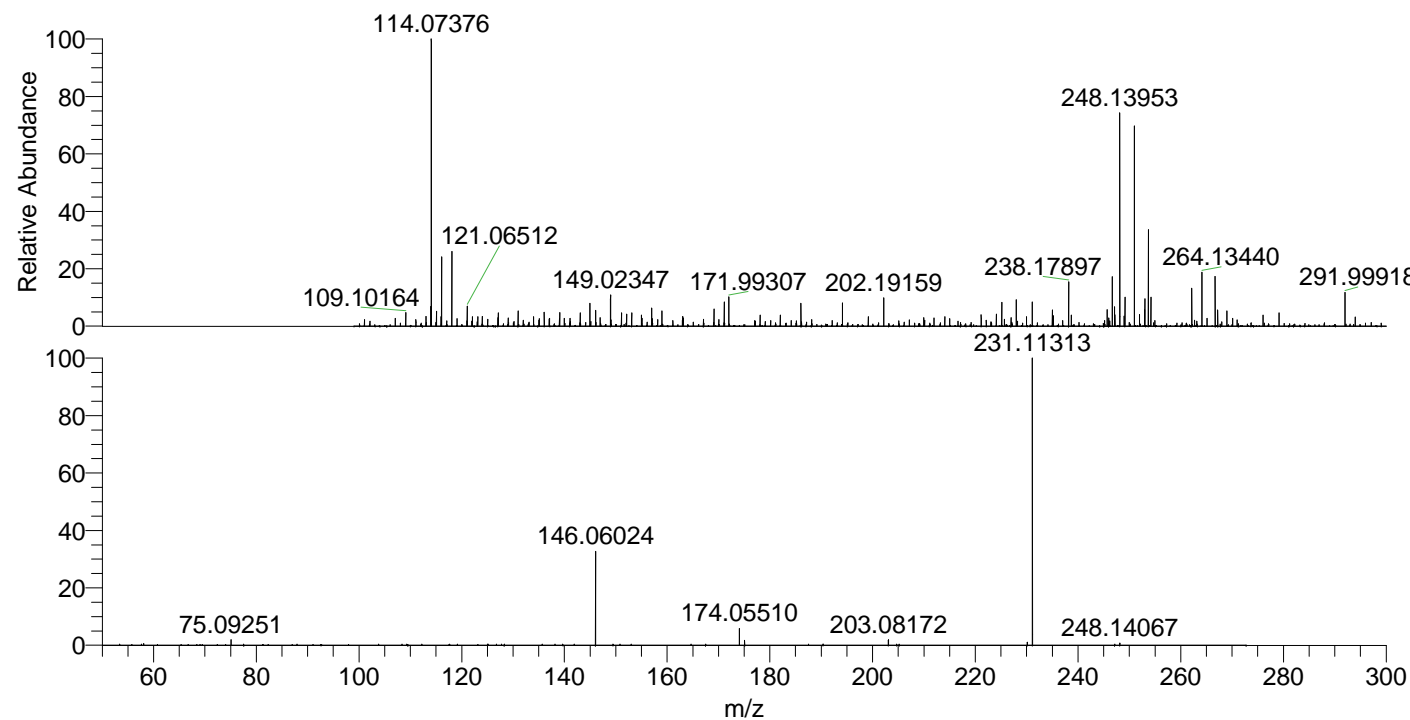
NL: 3.22E5  
 Base Peak m/z= 50.00000-1500.00000 F:  
 FTMS + p ESI d Full ms2  
 248.14@hcd35.00 [50.00-270.00] MS  
 Pbirulai

Pbirulai#2904-2928 RT: 7.27-7.33 AV: 5

F: FTMS + p ESI d Full ms2 248.14 ...

m/z= 50.00000-1000.00000

m/z	Intensity	Relative
58.06597	919.1	0.55
75.09251	3267.5	1.97
146.06024	54886.1	33.13
174.05510	9679.9	5.84
175.08666	2769.5	1.67
203.08172	3128.6	1.89
230.12932	1706.2	1.03
231.11313	165655.9	100.00
248.14067	1243.2	0.75



NL: 8.50E5  
 Pbirulai#2905 RT: 7.27  
 AV: 1 T: FTMS + p ESI  
 Full lock ms  
 [100.00-1500.00]

NL: 1.63E5  
 Pbirulai#2897-2930 RT:  
 7.27-7.33 AV: 5 F: FTMS  
 + p ESI d Full ms2  
 248.14@hcd35.00  
 [50.00-270.00]