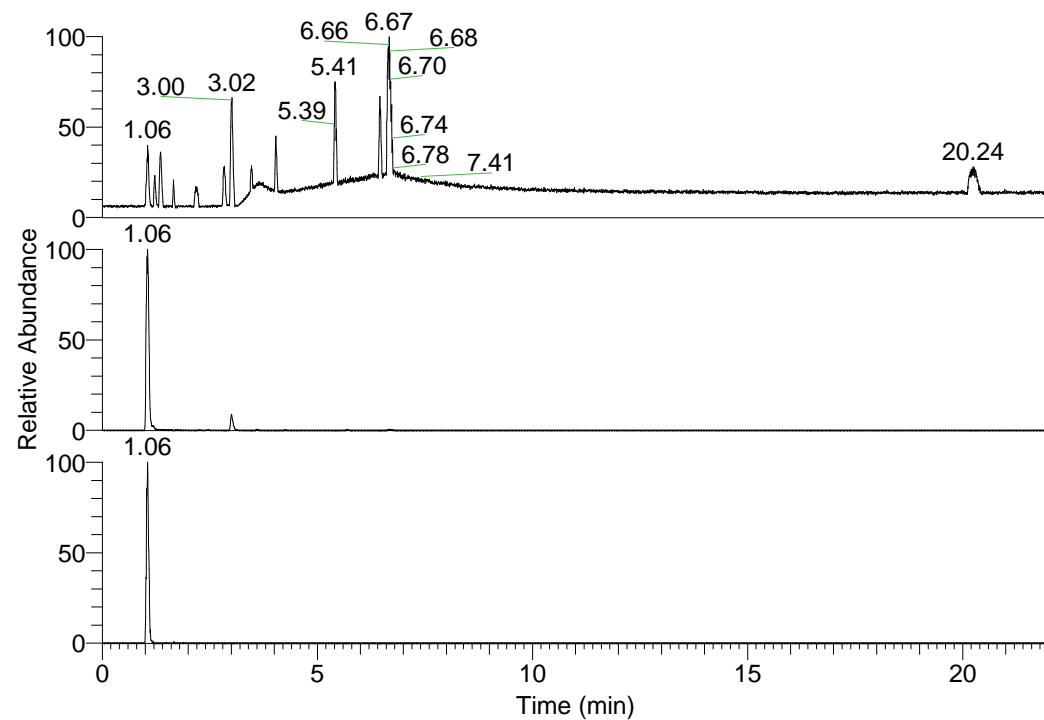


RT: 0.00 - 22.01



NL: 1.25E8  
 Base Peak m/z=  
 100.00000-1500.00000 F:  
 FTMS + p ESI Full ms  
 [100.00-1500.00] MS  
 Pluctuosa\_HDX

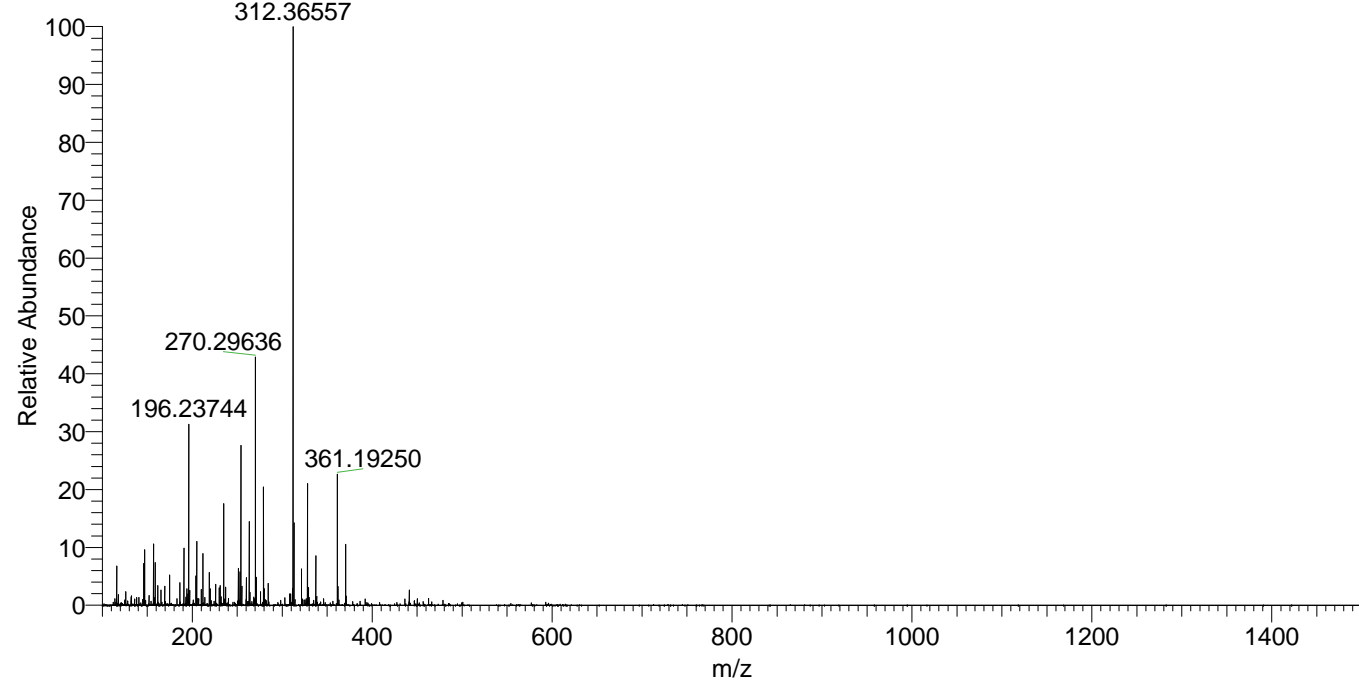
NL: 1.38E7  
 Base Peak m/z=  
 254.30059-254.30313 F:  
 FTMS + p ESI Full ms  
 [100.00-1500.00] MS  
 Pluctuosa\_HDX

NL: 3.69E5  
 Base Peak m/z=  
 128.15734-128.15862 F:  
 FTMS + p ESI Full ms  
 [100.00-1500.00] MS  
 Pluctuosa\_HDX

Pluctuosa\_HDX#160 RT: 1.06  
 T: FTMS + p ESI Full ms [100.00-1500.00]  
 m/z= 254.00000-255.00000

m/z	Intensity	Relative	Delta (ppm)	Composition
254.30148	13039511.0	100.00	0.67	C <sub>11</sub> H <sub>20</sub> <sup>2</sup> H <sub>9</sub> N <sub>6</sub>

Pluctuosa\_HDX #160 RT: 1.06 AV: 1 NL: 4.48E7  
 T: FTMS + p ESI Full ms [100.00-1500.00]



Pluctuosa\_HDX #160 RT: 1.06 AV: 1 NL: 1.24E7  
 T: FTMS + p ESI Full ms [100.00-1500.00]

