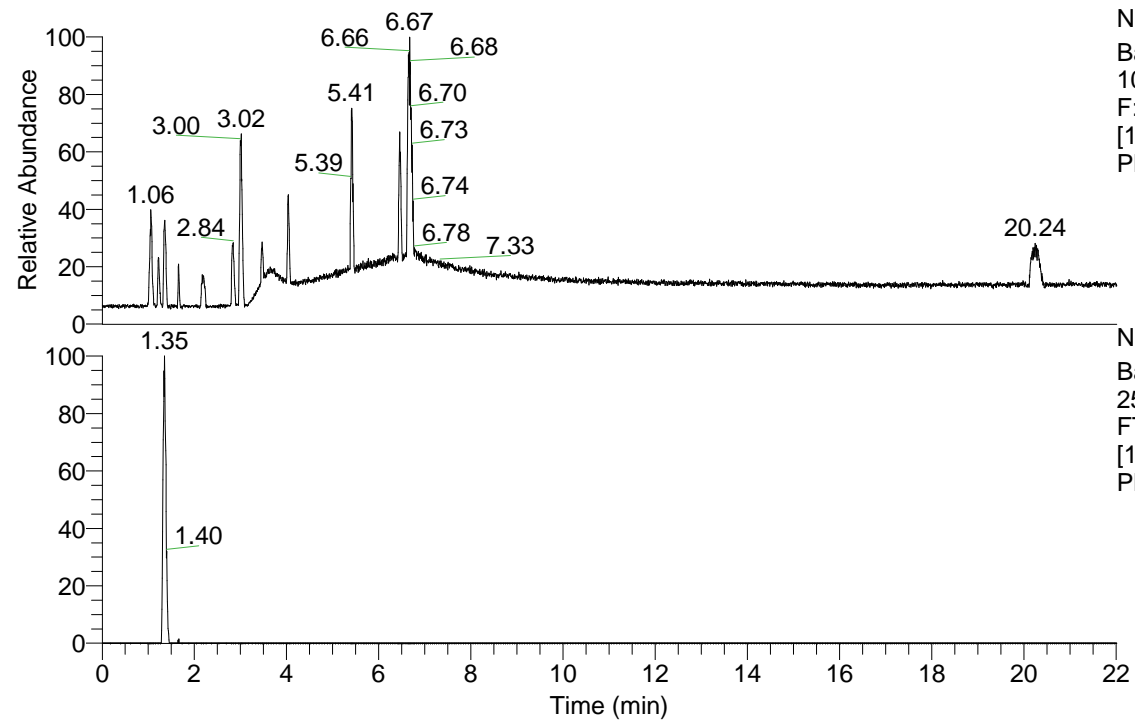


RT: 0.00 - 22.01



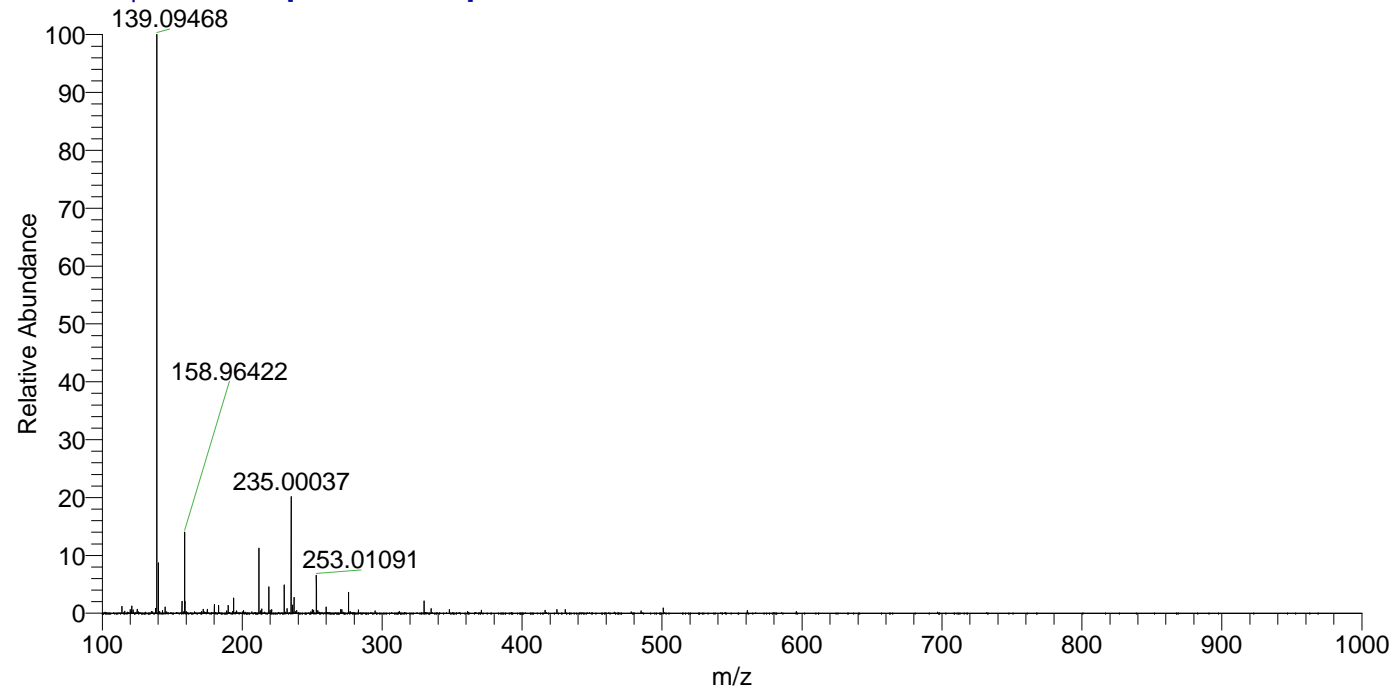
NL: 1.25E8
 Base Peak m/z= 100.00000-1500.00000
 F: FTMS + p ESI Full ms [100.00-1500.00] MS
 Pluctuosa_HDX

NL: 2.90E5
 Base Peak m/z= 250.12976-250.13226 F:
 FTMS + p ESI Full ms [100.00-1500.00] MS
 Pluctuosa_HDX

Pluctuosa_HDX#208 RT: 1.35
 T: FTMS + p ESI Full ms [100.00-1500.00]
 m/z= 250.00000-251.00000

m/z	Intensity	Relative	Delta (ppm)	Composition
250.13062	289710.6	100.00	0.63	C ₉ H ₈ ² H ₆ O ₅ N ₃

Pluctuosa_HDX #208 RT: 1.35 AV: 1 NL: 4.39E7
 T: FTMS + p ESI Full ms [100.00-1500.00]



Pluctuosa_HDX #208 RT: 1.35 AV: 1 NL: 2.87E6
 T: FTMS + p ESI Full ms [100.00-1500.00]

