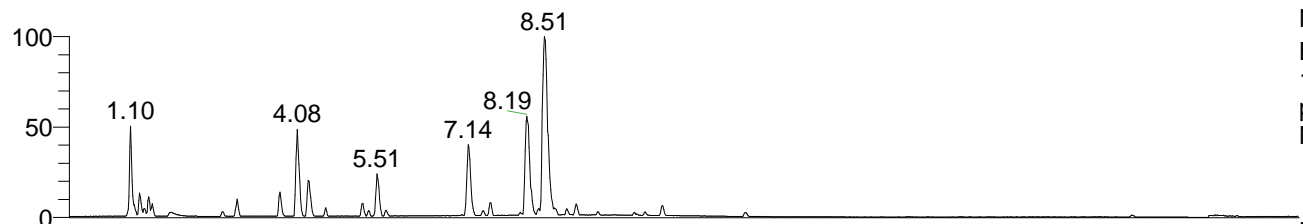


RT: 0.00 - 22.01



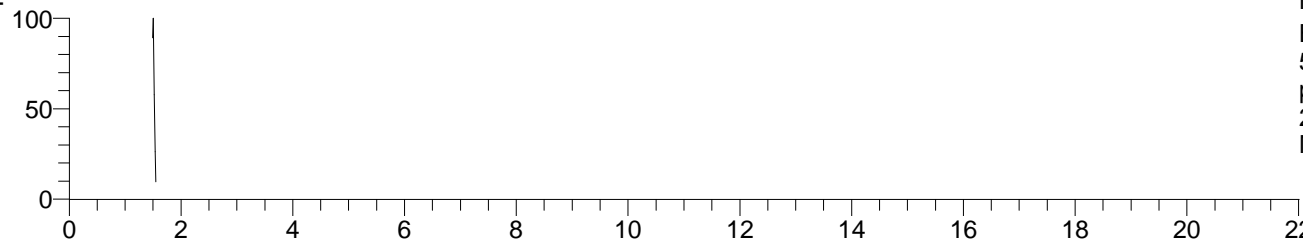
NL: 7.88E7
 Base Peak m/z=
 100.00000-1500.00000 F: FTMS +
 p ESI Full ms [100.00-1500.00]
 MS Pbirulai

Pbirulai#598-621 RT: 1.49-1.55 AV: 5
 F: FTMS + p ESI d Full ms2 244.09 ...
 m/z= 50.00000-1000.00000

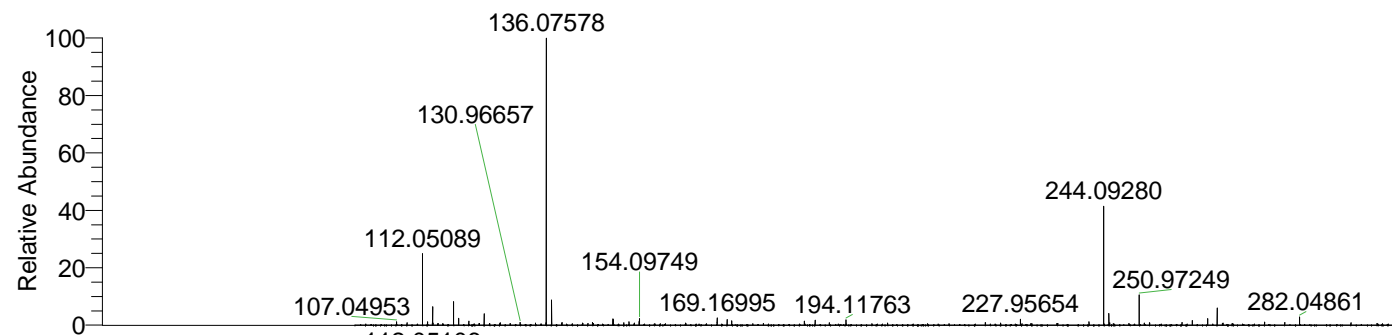
m/z	Intensity	Relative
112.05106	974170.9	100.00



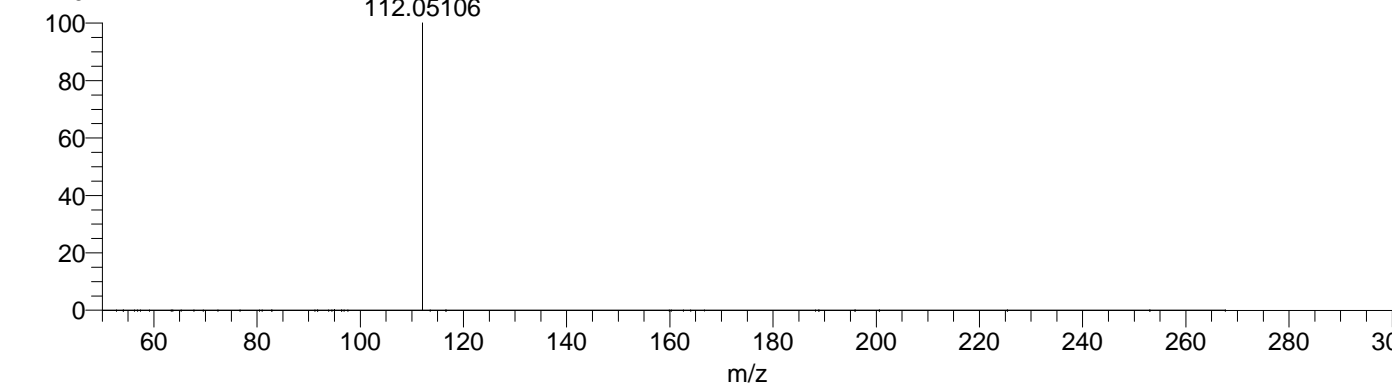
NL: 1.88E6
 Base Peak m/z=
 244.09212-244.09456 F: FTMS +
 p ESI Full ms [100.00-1500.00]
 MS Pbirulai



NL: 1.79E6
 Base Peak m/z=
 50.00000-1500.00000 F: FTMS +
 p ESI d Full ms2
 244.09@hcd35.00 [50.00-265.00]
 MS Pbirulai



NL: 4.44E6
 Pbirulai#601 RT: 1.50
 AV: 1 T: FTMS + p ESI
 Full lock ms
 [100.00-1500.00]



NL: 9.55E5
 Pbirulai#594-621 RT:
 1.49-1.55 AV: 5 F: FTMS
 + p ESI d Full ms2
 244.09@hcd35.00
 [50.00-265.00]