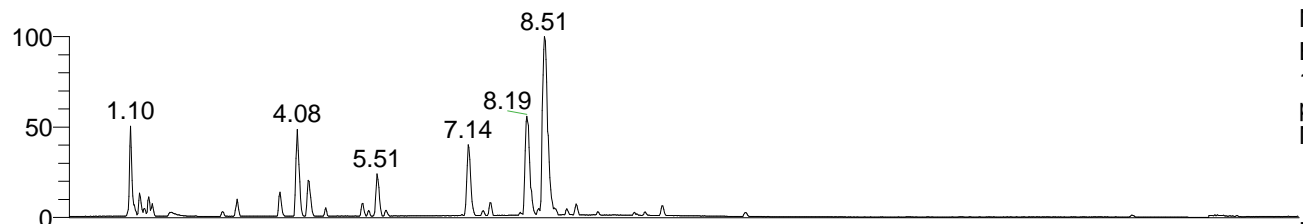


RT: 0.00 - 22.01



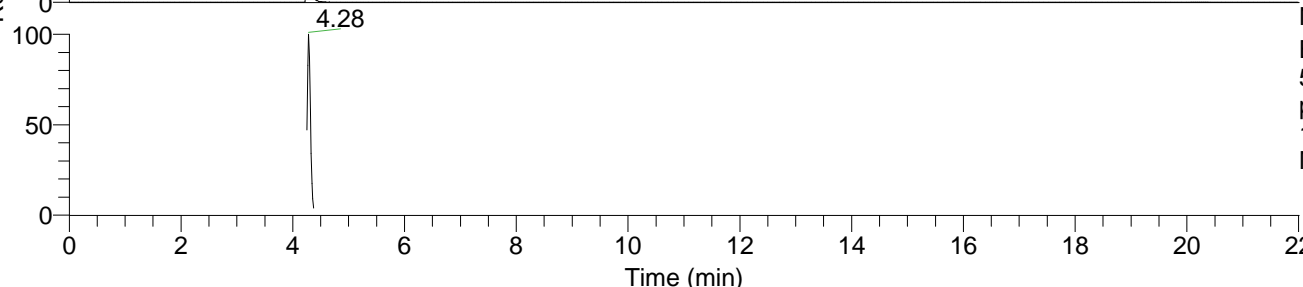
NL: 7.88E7
 Base Peak m/z=
 100.00000-1500.00000 F: FTMS +
 p ESI Full ms [100.00-1500.00]
 MS Pbirulai

Pbirulai#1707-1726 RT: 4.27-4.31 AV: 4
 F: FTMS + p ESI d Full ms2 177.10@h ...
 m/z= 50.00000-1000.00000

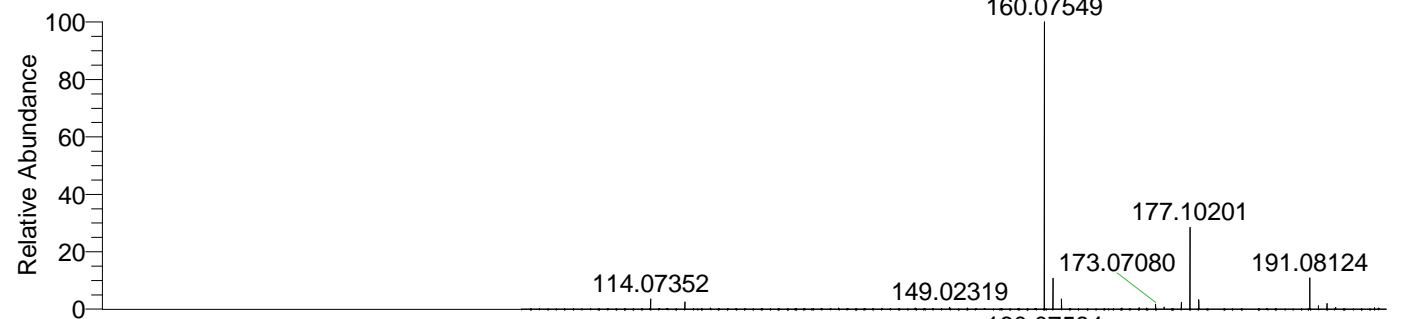
m/z	Intensity	Relative
115.05455	30260.6	0.95
132.08121	71665.5	2.25
149.02374	17568.5	0.55
160.07584	3179637.8	100.00



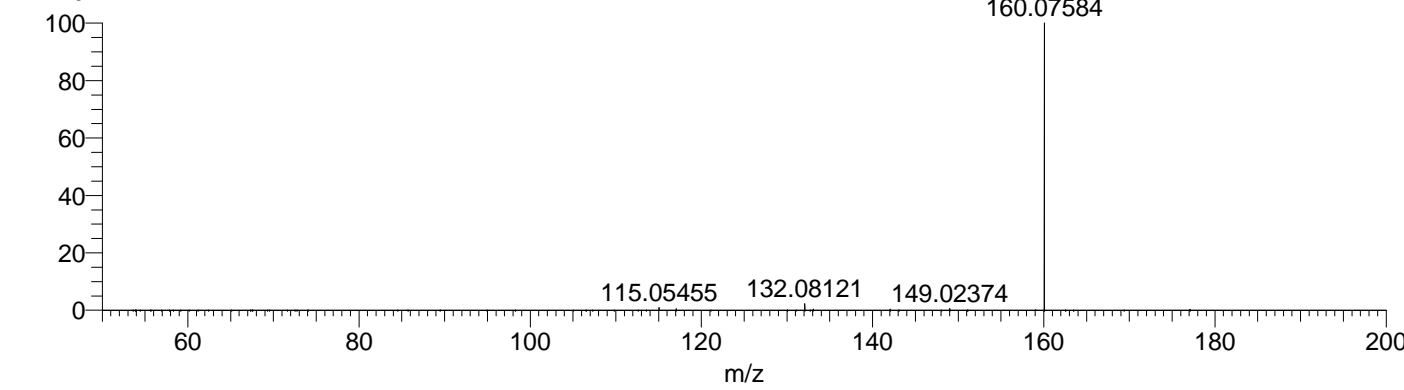
NL: 4.64E6
 Base Peak m/z=
 177.10189-177.10367 F: FTMS +
 p ESI Full ms [100.00-1500.00]
 MS Pbirulai



NL: 4.17E6
 Base Peak m/z=
 50.00000-1500.00000 F: FTMS +
 p ESI d Full ms2
 177.10@hcd35.00 [50.00-200.00]
 MS Pbirulai



NL: 1.58E7
 Pbirulai#1711 RT: 4.28
 AV: 1 T: FTMS + p ESI
 Full lock ms
 [100.00-1500.00]



NL: 3.07E6
 Pbirulai#1705-1729 RT:
 4.27-4.31 AV: 4 F: FTMS
 + p ESI d Full ms2
 177.10@hcd35.00
 [50.00-200.00]