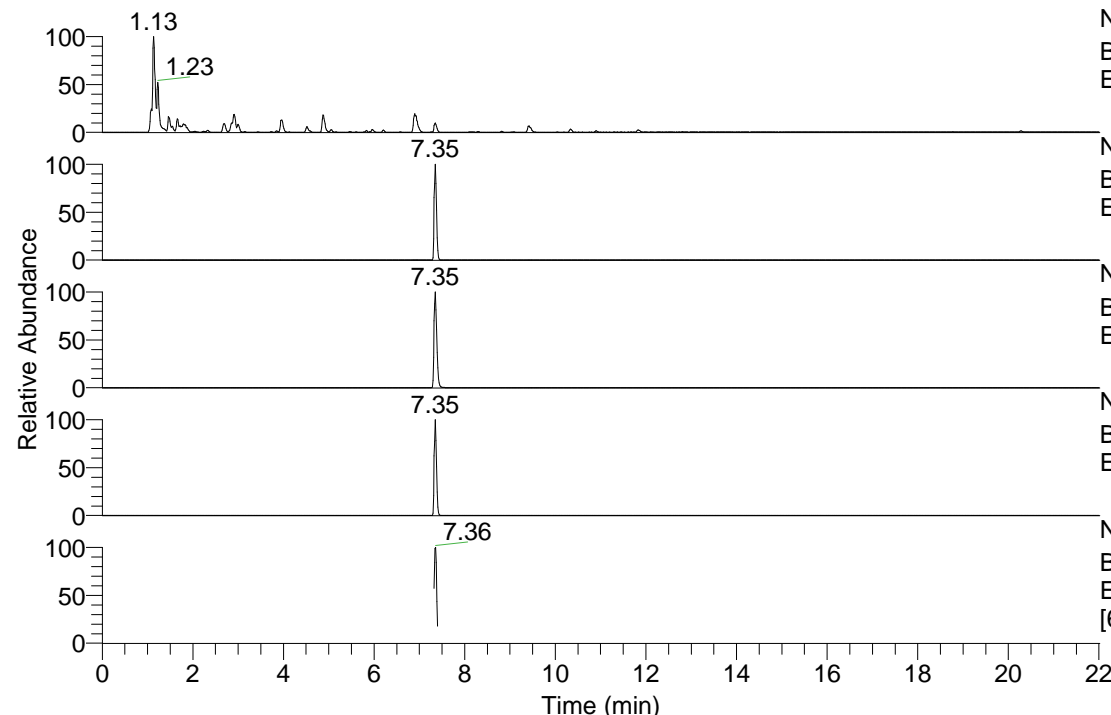


RT: 0.00 - 22.01



NL: 8.91E8
 Base Peak m/z= 100.00000-1500.00000 F: FTMS + p
 ESI Full ms [100.0000-1500.0000] MS Pbistriata

NL: 1.78E6
 Base Peak m/z= 758.50775-758.52293 F: FTMS + p
 ESI Full ms [100.0000-1500.0000] MS Pbistriata

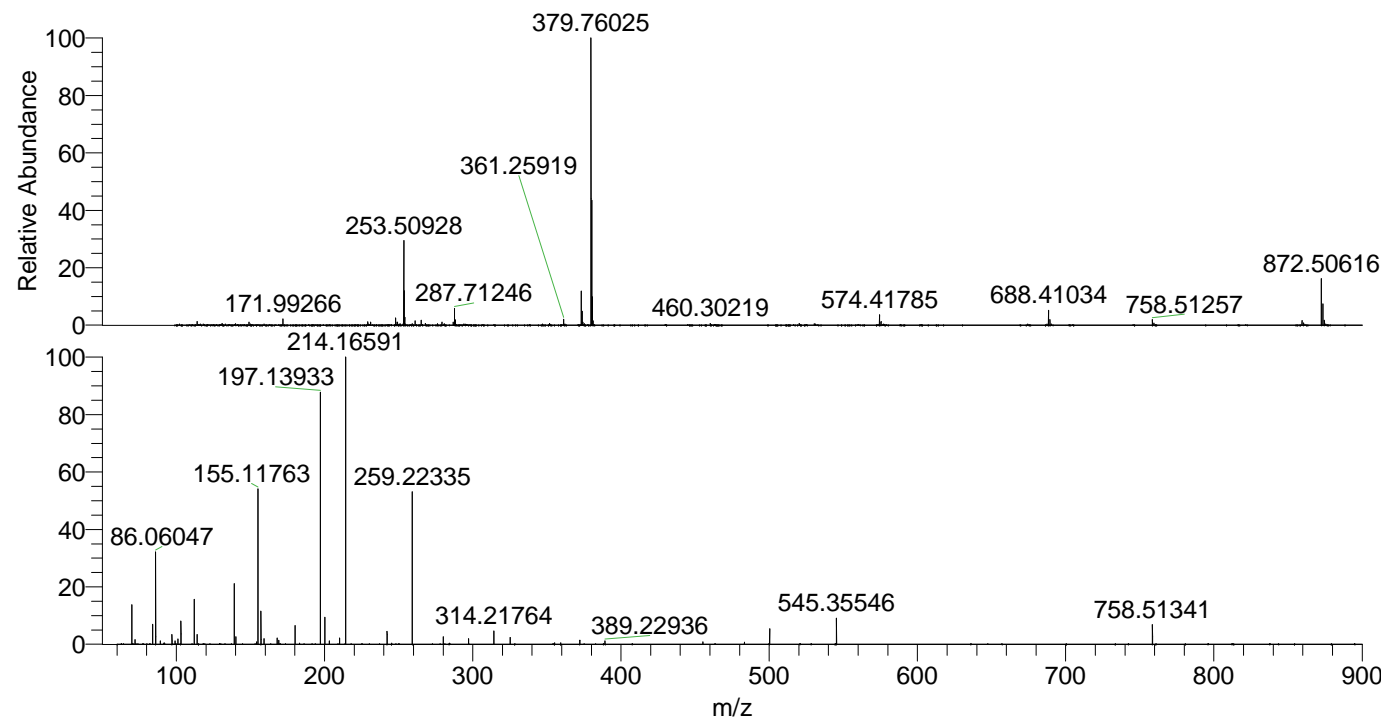
NL: 8.94E7
 Base Peak m/z= 379.75778-379.76538 F: FTMS + p
 ESI Full ms [100.0000-1500.0000] MS Pbistriata

NL: 1.45E7
 Base Peak m/z= 872.49947-872.51693 F: FTMS + p
 ESI Full ms [100.0000-1500.0000] MS Pbistriata

NL: 1.42E6
 Base Peak m/z= 50.00000-1500.00000 F: FTMS + p
 ESI d Full ms2 872.5060@hcd35.00
 [60.6667-910.0000] MS Pbistriata

Pbistriata#3090-3125 RT: 7.32-7.40
 F: FTMS + p ESI d Full ms2 872.51 ...
 m/z= 50.00000-1000.00000

m/z	Intensity	Relative
70.06568	125487.7	13.65
72.08133	15039.9	1.64
84.08127	64117.2	6.98
86.06047	291933.4	31.76
86.09682	23897.6	2.60
89.10779	10732.2	1.17
97.07655	31313.1	3.41
99.09196	10215.9	1.11
101.07114	16337.5	1.78
103.12327	73494.1	8.00
112.08709	147378.9	16.03
114.10282	30935.1	3.37
139.08716	8678.8	0.94
139.09749	197174.0	21.45
140.08190	23842.6	2.59
154.13379	7315.7	0.80
155.11763	491440.8	53.47
157.10823	105855.1	11.52
159.09211	18016.6	1.96
168.11307	20445.4	2.22
169.10841	12957.6	1.41
180.11288	59722.6	6.50
197.13933	809928.0	88.12
200.17531	87117.7	9.48
203.15014	10609.7	1.15
210.15992	20270.6	2.21
214.16591	919130.9	100.00
242.19714	40940.9	4.45
259.22335	489526.2	53.26
280.16514	24130.7	2.63
297.19263	17843.9	1.94
314.21764	42142.5	4.59
325.18668	21522.9	2.34
359.27412	5104.1	0.56
372.20302	13103.9	1.43
389.22936	11244.3	1.22
455.27464	7773.0	0.85
483.27141	6940.9	0.76
500.29792	48731.5	5.30
545.35546	84164.8	9.16
758.51341	63090.7	6.86



NL: 8.93E7
 Pbistriata#3103 RT: 7.35
 AV: 1 T: FTMS + p ESI Full
 ms [100.0000-1500.0000]

NL: 9.08E5
 Pbistriata#3031-3338 RT:
 7.32-7.40 AV: 7 F: FTMS +
 p ESI d Full ms2
 872.5060@hcd35.00
 [60.6667-910.0000]