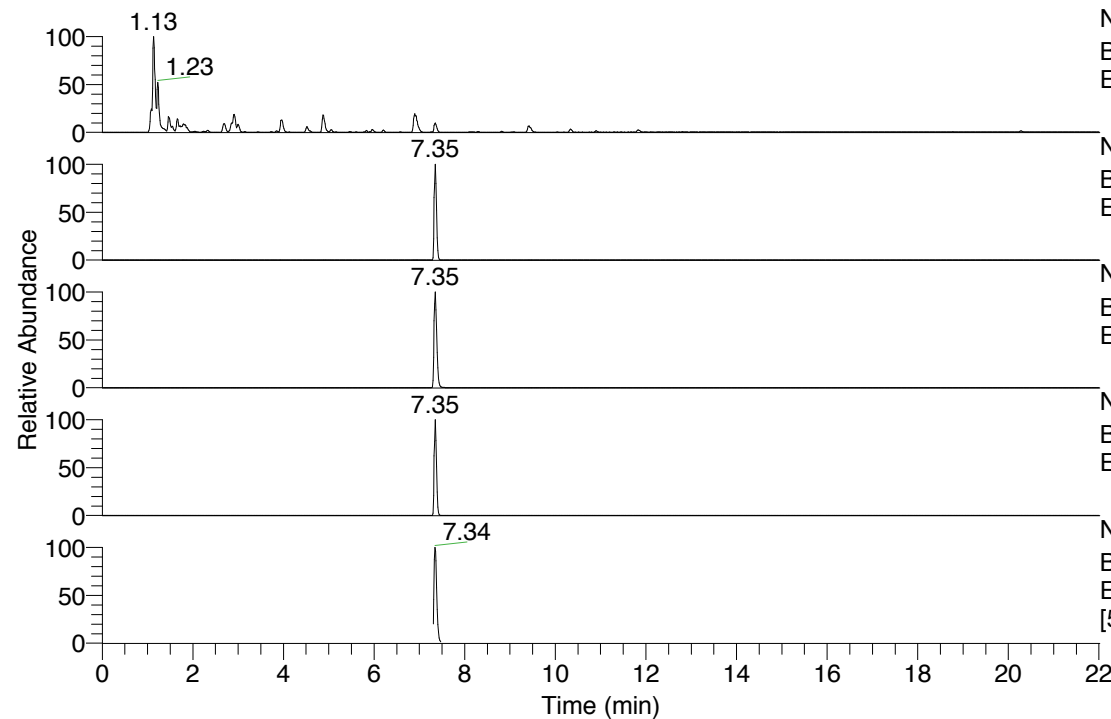


RT: 0.00 - 22.01



NL: 8.91E8
 Base Peak m/z= 100.00000-1500.00000 F: FTMS + p
 ESI Full ms [100.0000-1500.0000] MS Pbistriata

NL: 1.78E6
 Base Peak m/z= 758.50775-758.52293 F: FTMS + p
 ESI Full ms [100.0000-1500.0000] MS Pbistriata

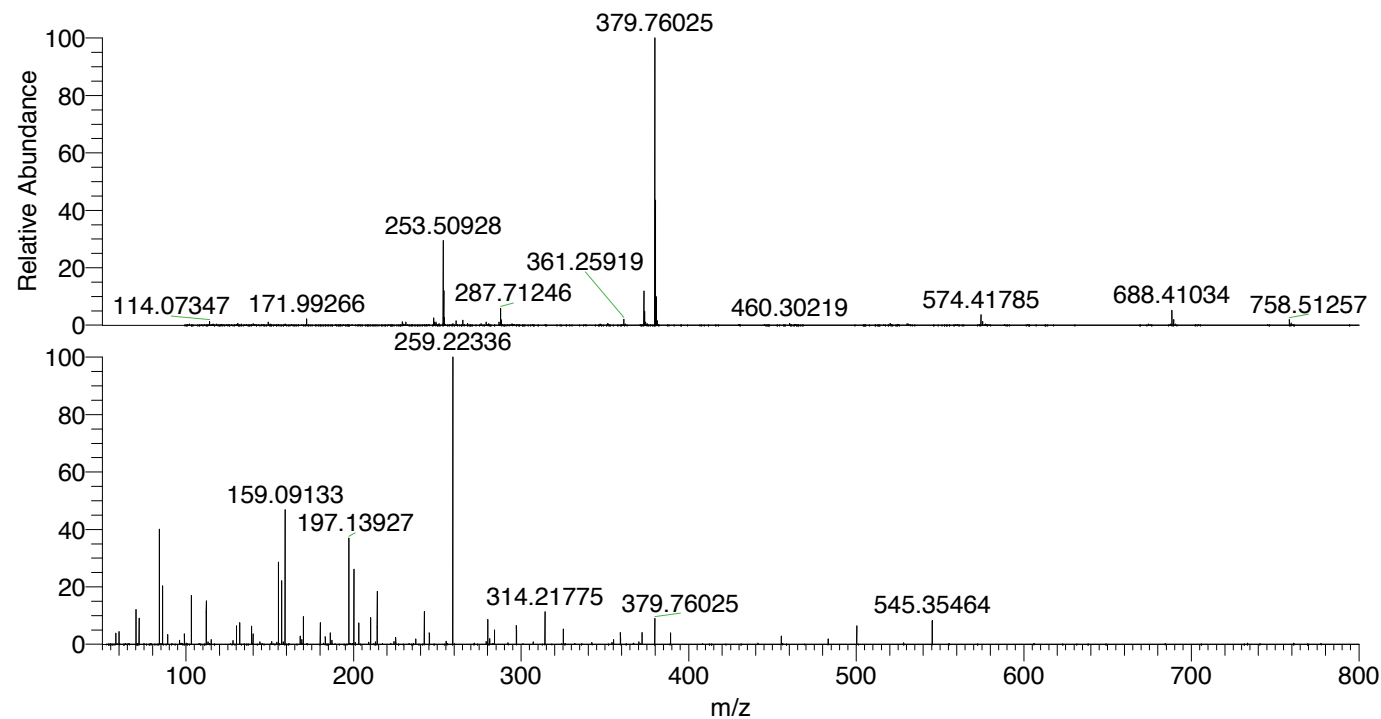
NL: 8.94E7
 Base Peak m/z= 379.75778-379.76538 F: FTMS + p
 ESI Full ms [100.0000-1500.0000] MS Pbistriata

NL: 1.45E7
 Base Peak m/z= 872.49947-872.51693 F: FTMS + p
 ESI Full ms [100.0000-1500.0000] MS Pbistriata

NL: 4.89E6
 Base Peak m/z= 50.00000-1500.00000 F: FTMS + p
 ESI Full ms [53.0000-795.0000] MS Pbistriata

Pbistriata#3082-3152 RT: 7.31-7.47 AV:
 F: FTMS + p ESI d Full ms2 379.7600 ...
 m/z= 50.00000-1000.00000

m/z	Intensity	Relative
58.06584	77908.6	3.90
60.05634	87976.2	4.40
70.06568	239913.4	12.00
72.08141	186718.9	9.34
84.08121	813711.8	40.71
86.06052	407840.1	20.40
86.09692	164555.6	8.23
89.10768	68287.8	3.42
99.09203	71282.3	3.57
103.12321	341394.9	17.08
112.08699	301619.5	15.09
115.08699	33240.4	1.66
130.06515	129710.0	6.49
132.08070	155246.5	7.77
139.08666	112356.2	5.62
139.09787	128065.0	6.41
140.08195	74309.7	3.72
155.11763	569196.3	28.48
157.10819	448240.1	22.43
159.09133	942576.2	47.16
168.11326	56754.9	2.84
169.10854	33893.0	1.70
170.05981	198397.0	9.93
180.11322	151261.3	7.57
183.14928	51288.7	2.57
186.12364	79604.4	3.98
187.08650	28663.9	1.43
197.13927	736907.8	36.87
200.17529	521660.8	26.10
203.14984	148091.5	7.41
210.15997	185611.2	9.29
214.09796	133665.3	6.69
214.11817	64858.9	3.24
214.16557	379245.2	18.97
225.13843	47266.0	2.36
225.17180	27243.4	1.36
237.08680	38212.0	1.91
242.19694	231395.5	11.58
245.23347	79478.7	3.98
259.22336	1998773.6	100.00
259.22336	173100.3	8.66
281.19788	38562.7	1.93
284.10288	99705.2	4.99
297.19204	132405.8	6.62
314.21775	223835.4	11.20
325.18653	106492.3	5.33
355.17458	33353.5	1.67
359.27579	80850.9	4.05
372.20205	84040.7	4.20
379.76025	182855.9	9.15
389.22862	80514.2	4.03
455.27477	56707.1	2.84
483.27132	37466.7	1.87
500.29743	127712.2	6.39
545.35464	169252.2	8.47



NL: 8.93E7
 Pbistriata#3103 RT: 7.35
 AV: 1 T: FTMS + p ESI Full
 ms [100.0000-1500.0000]

NL: 1.98E6
 Pbistriata#2998-3166 RT:
 7.31-7.47 AV: 13 F: FTMS
 + p ESI d Full ms2
 379.7602@hcd35.00
 [53.0000-795.0000]

Pbistriata#3082-3152 RT: 7.31-7.47 AV: 13

F: FTMS + p ESI d Full ms2 379.7600@hcd35.00 [53.0000-795.0000]

m/z= 50.00000-1000.00000

m/z	Intensity	Relative
58.06584	77908.6	3.90
60.05634	87976.2	4.40
70.06568	239913.4	12.00
72.08141	186718.9	9.34
84.08121	813711.8	40.71
86.06052	407840.1	20.40
86.09692	164555.6	8.23
89.10768	68287.8	3.42
96.08100	27202.2	1.36
99.09203	71282.3	3.57
103.12321	341394.9	17.08
112.08699	301619.5	15.09
113.10741	16964.9	0.85
115.08699	33240.4	1.66
128.11828	25292.3	1.27
130.06515	129710.0	6.49
132.08070	155246.5	7.77
139.08666	112356.2	5.62
139.09787	128065.0	6.41
140.08195	74309.7	3.72
144.07994	16615.0	0.83
151.08665	20111.6	1.01
154.13303	13489.4	0.67
155.11763	569196.3	28.48
157.10819	448240.1	22.43
158.06034	16904.3	0.85
159.09133	942576.2	47.16
168.11326	56754.9	2.84
169.09660	17933.5	0.90
169.10854	33893.0	1.70
170.05981	198397.0	9.93
180.11322	151261.3	7.57
183.14928	51288.7	2.57
186.12364	79604.4	3.98
187.08650	28663.9	1.43
197.13927	736907.8	36.87
200.17529	521660.8	26.10
201.10178	11816.1	0.59
203.14984	148091.5	7.41

Pbistriata#3082-3152 RT: 7.31-7.47 AV: 13

F: FTMS + p ESI d Full ms2 379.7600@hcd35.00 [53.0000-795.0000]

m/z= 50.00000-1000.00000

m/z	Intensity	Relative
209.09267	14652.1	0.73
210.15997	185611.2	9.29
213.13495	16567.9	0.83
214.09796	133665.3	6.69
214.11817	64858.9	3.24
214.16557	379245.2	18.97
224.18643	19749.0	0.99
225.13843	47266.0	2.36
225.17180	27243.4	1.36
237.08680	38212.0	1.91
242.19694	231395.5	11.58
245.23347	79478.7	3.98
255.21784	20987.9	1.05
259.22336	1998773.6	100.00
279.18122	20128.2	1.01
280.16482	173100.3	8.66
281.19788	38562.7	1.93
284.10288	99705.2	4.99
292.20624	10273.3	0.51
297.19204	132405.8	6.62
307.17527	17406.3	0.87
314.21775	223835.4	11.20
325.18653	106492.3	5.33
342.24999	11311.0	0.57
354.19130	11458.7	0.57
355.17458	33353.5	1.67
359.27579	80850.9	4.05
370.24431	17325.9	0.87
372.20205	84040.7	4.20
379.76025	182855.9	9.15
389.22862	80514.2	4.03
455.27477	56707.1	2.84
483.27132	37466.7	1.87
500.29743	127712.2	6.39
545.35464	169252.2	8.47