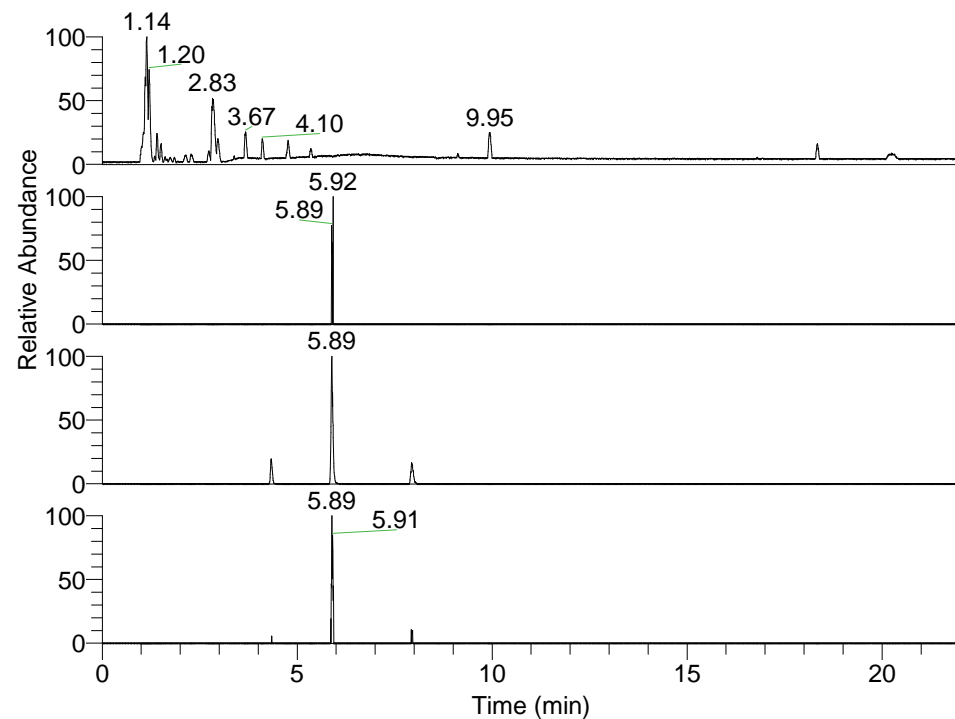


RT: 0.00 - 22.01



NL: 3.85E8  
 Base Peak m/z=  
 100.00000-1500.00000 F: FTMS + p  
 ESI Full ms [100.00-1500.00] MS  
 Pbistriata\_HDX

NL: 1.12E4  
 Base Peak m/z= 761.58032-761.58794  
 F: FTMS + p ESI Full ms  
 [100.00-1500.00] MS Pbistriata\_HDX

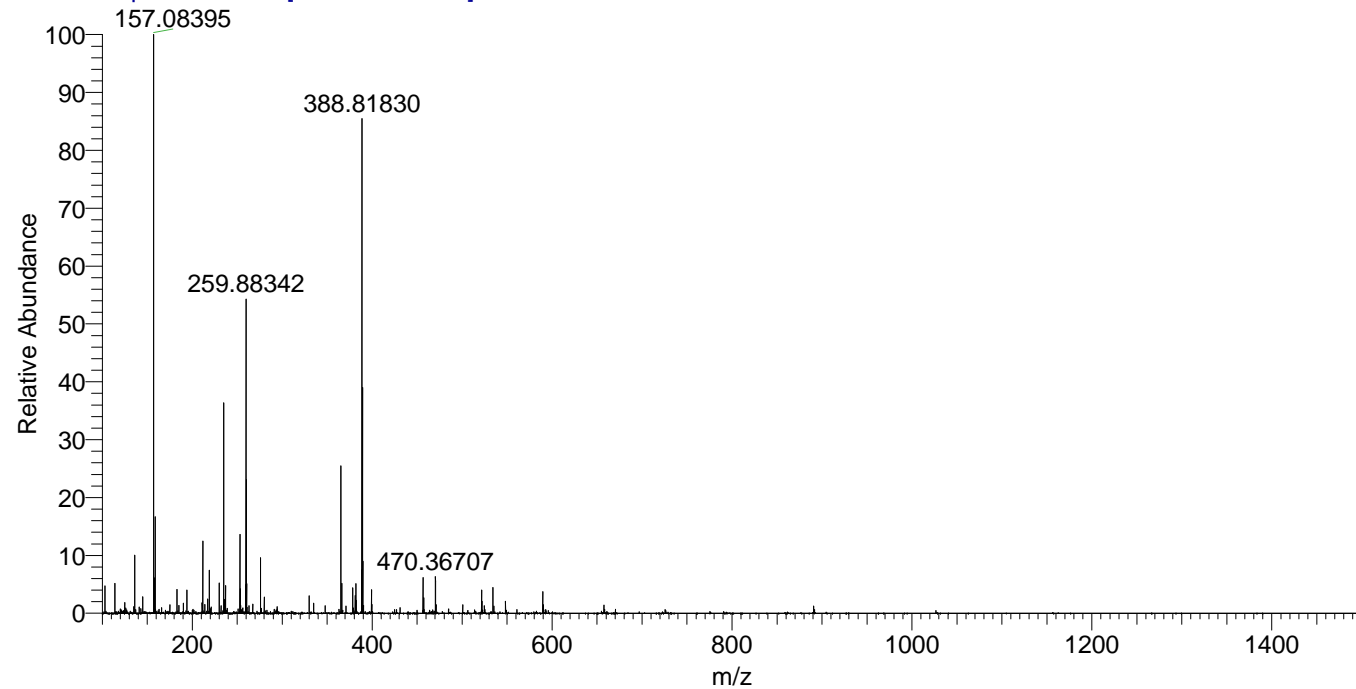
NL: 2.77E6  
 Base Peak m/z= 381.79721-381.80103  
 F: FTMS + p ESI Full ms  
 [100.00-1500.00] MS Pbistriata\_HDX

NL: 5.37E4  
 Base Peak m/z= 876.57889-876.58765  
 F: FTMS + p ESI Full ms  
 [100.00-1500.00] MS Pbistriata\_HDX

Pbistriata\_HDX#967 RT: 5.92  
 T: FTMS + p ESI Full ms [100.00-1500.00]  
 m/z= 381.00000-382.00000

m/z	Intensity	Relative	Delta (ppm)	Composition
381.79953	1268954.3	100.00	0.49	C <sub>35</sub> H <sub>47</sub> <sup>2</sup> H <sub>16</sub> O <sub>6</sub> N <sub>12</sub>
			-1.53	C <sub>35</sub> H <sub>49</sub> <sup>2</sup> H <sub>15</sub> O <sub>6</sub> N <sub>12</sub>
			2.52	C <sub>35</sub> H <sub>45</sub> <sup>2</sup> H <sub>17</sub> O <sub>6</sub> N <sub>12</sub>
			-3.56	C <sub>35</sub> H <sub>51</sub> <sup>2</sup> H <sub>14</sub> O <sub>6</sub> N <sub>12</sub>
			4.55	C <sub>35</sub> H <sub>43</sub> <sup>2</sup> H <sub>18</sub> O <sub>6</sub> N <sub>12</sub>
			-5.59	C <sub>35</sub> H <sub>53</sub> <sup>2</sup> H <sub>13</sub> O <sub>6</sub> N <sub>12</sub>
			6.58	C <sub>35</sub> H <sub>41</sub> <sup>2</sup> H <sub>19</sub> O <sub>6</sub> N <sub>12</sub>
			-7.62	C <sub>35</sub> H <sub>55</sub> <sup>2</sup> H <sub>12</sub> O <sub>6</sub> N <sub>12</sub>
			8.60	C <sub>35</sub> H <sub>39</sub> <sup>2</sup> H <sub>20</sub> O <sub>6</sub> N <sub>12</sub>
			-9.65	C <sub>35</sub> H <sub>57</sub> <sup>2</sup> H <sub>11</sub> O <sub>6</sub> N <sub>12</sub>

Pbistriata\_HDX #967 RT: 5.92 AV: 1 NL: 2.38E7  
 T: FTMS + p ESI Full ms [100.00-1500.00]



Pbistriata\_HDX #967 RT: 5.92 AV: 1 NL: 1.21E6  
 T: FTMS + p ESI Full ms [100.00-1500.00]

