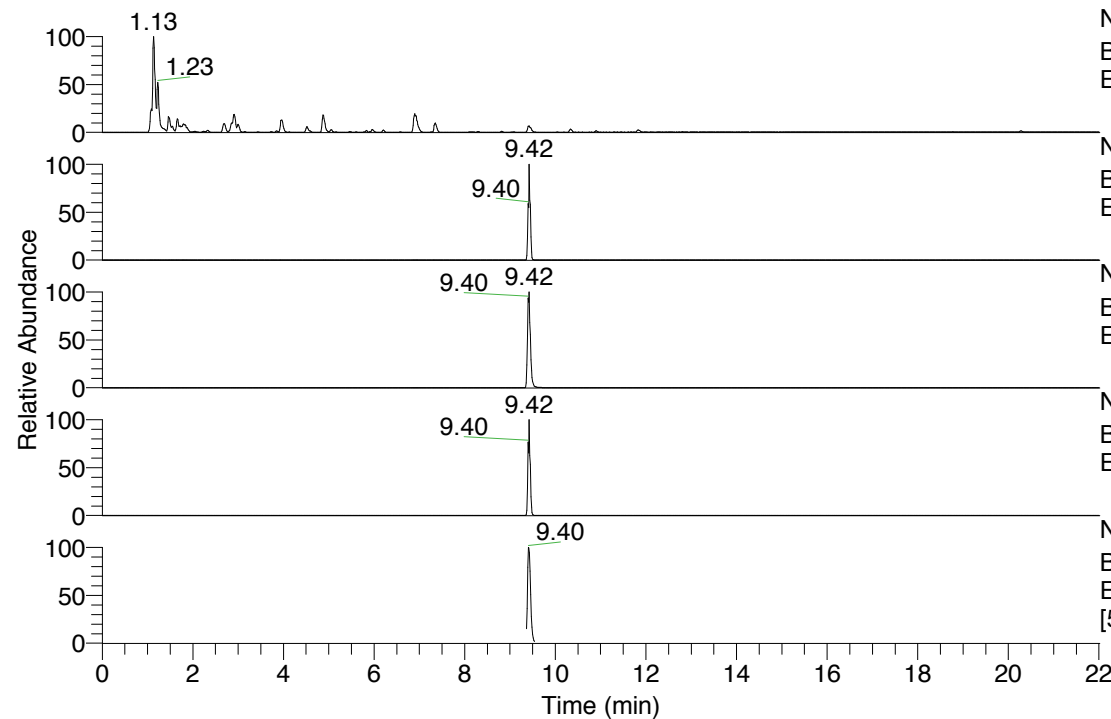


RT: 0.00 - 22.01



NL: 8.91E8
 Base Peak m/z= 100.00000-1500.00000 F: FTMS + p
 ESI Full ms [100.0000-1500.0000] MS Pbistriata

NL: 3.71E6
 Base Peak m/z= 729.48150-729.49608 F: FTMS + p
 ESI Full ms [100.0000-1500.0000] MS Pbistriata

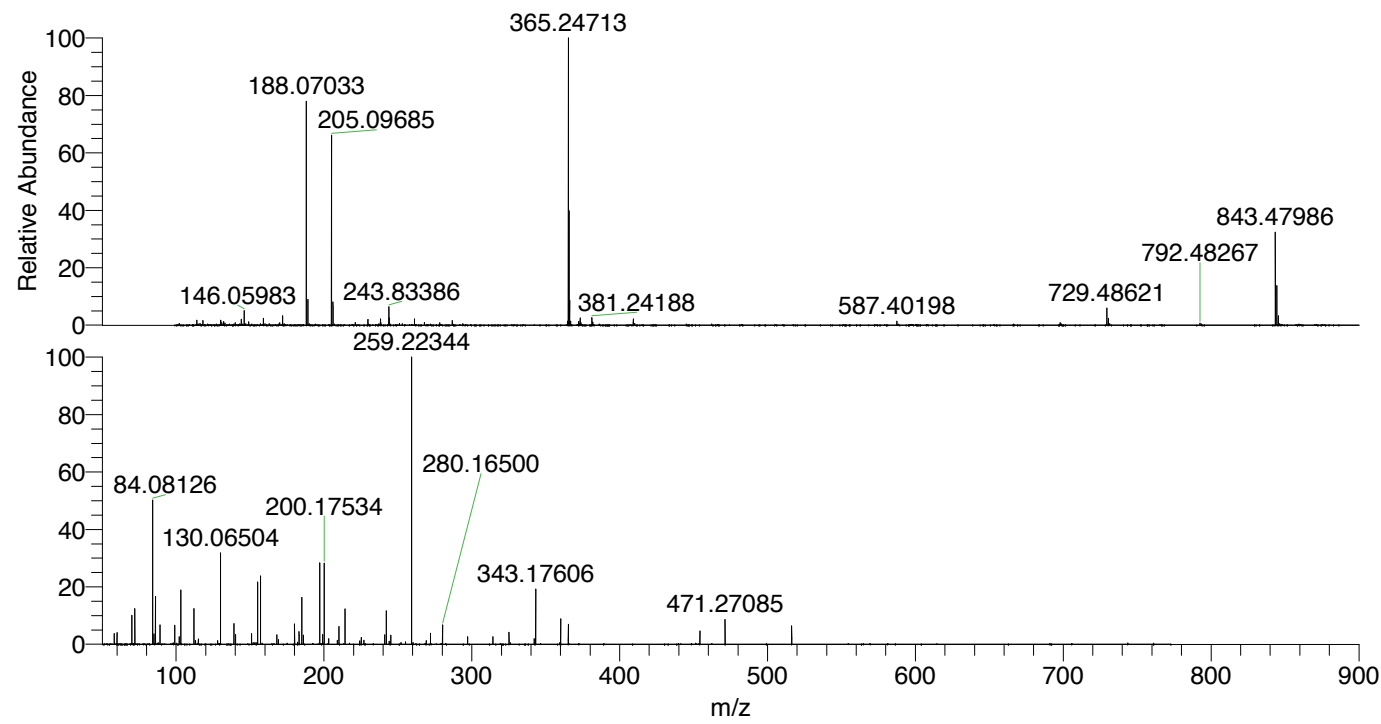
NL: 6.14E7
 Base Peak m/z= 365.24466-365.25196 F: FTMS + p
 ESI Full ms [100.0000-1500.0000] MS Pbistriata

NL: 1.99E7
 Base Peak m/z= 843.47322-843.49008 F: FTMS + p
 ESI Full ms [100.0000-1500.0000] MS Pbistriata

NL: 4.22E6
 Base Peak m/z= 50.00000-1500.00000 F: FTMS + p
 ESI d Full ms2 365.2471@hcd35.00
 [51.0000-765.0000] MS Pbistriata

Pbistriata#3916-3996 RT: 9.37-9.54 AV:
 F: FTMS + p ESI d Full ms2 365.2500 ...
 m/z= 50.00000-1000.00000

m/z	Intensity	Relative
58.06586	64359.4	3.72
60.05631	70908.4	4.10
70.06571	173116.0	10.02
72.08140	216954.6	12.56
84.08126	888451.9	51.42
85.06526	62450.8	3.61
86.06052	286492.3	16.58
86.09689	165740.8	9.59
89.10777	118684.0	6.87
99.09203	114638.5	6.63
102.09165	47043.0	2.72
103.12324	325998.0	18.87
112.08704	216171.8	12.51
113.10752	23330.2	1.35
115.08662	32520.0	1.88
128.11810	21445.1	1.24
130.06504	560866.6	32.46
139.08652	125988.6	7.29
139.09749	63817.9	3.69
140.08181	59544.4	3.45
151.08665	66842.4	3.87
155.11771	372533.8	21.56
157.10820	416152.2	24.08
168.11303	56462.2	3.27
169.09633	27966.6	1.62
180.11269	120642.2	6.98
183.14917	75536.4	4.37
185.07054	289155.9	16.73
186.12367	56627.8	3.28
197.13931	489324.6	28.32
199.08667	59306.9	3.43
200.17534	489719.3	28.34
203.15064	34080.0	1.97
209.09206	24900.6	1.44
210.15993	106818.6	6.18
214.16581	216997.9	12.56
225.17087	42123.0	2.44
227.08097	23757.1	1.37
241.13321	57479.4	3.33
242.19699	204792.4	11.85
245.23331	53888.3	3.12
259.22344	1727876.0	100.00
269.12821	23176.3	1.34
272.10312	66029.4	3.82
280.16500	116192.0	6.72
297.19205	46601.2	2.70
314.21793	44132.8	2.55
325.16548	73686.7	4.26
342.19236	34254.5	1.98
343.17606	335752.8	19.43
360.20227	151981.4	8.80
365.24684	121210.9	7.02
454.24407	79592.3	4.61
471.27085	154032.8	8.91
516.32831	113107.7	6.55



NL: 6.14E7
 Pbistriata#3943 RT: 9.42
 AV: 1 T: FTMS + p ESI Full
 ms [100.0000-1500.0000]

NL: 1.72E6
 Pbistriata#3895-4052 RT:
 9.37-9.54 AV: 14 F: FTMS
 + p ESI d Full ms2
 365.2471@hcd35.00
 [51.0000-765.0000]

Pbistriata#3916-3996 RT: 9.37-9.54 AV: 14

F: FTMS + p ESI d Full ms2 365.2500@hcd35.00 [51.0000-765.0000]

m/z= 50.00000-1000.00000

m/z	Intensity	Relative
58.06586	64359.4	3.72
60.05631	70908.4	4.10
70.06571	173116.0	10.02
72.08140	216954.6	12.56
84.08126	888451.9	51.42
84.08651	20022.0	1.16
85.06526	62450.8	3.61
86.06052	286492.3	16.58
86.09689	165740.8	9.59
88.03977	9159.8	0.53
89.10777	118684.0	6.87
99.09203	114638.5	6.63
102.09165	47043.0	2.72
103.12324	325998.0	18.87
112.08704	216171.8	12.51
113.10752	23330.2	1.35
115.08662	32520.0	1.88
128.11810	21445.1	1.24
130.06504	560866.6	32.46
139.08652	125988.6	7.29
139.09749	63817.9	3.69
140.08181	59544.4	3.45
151.08665	66842.4	3.87
152.11786	10188.4	0.59
153.10168	9025.7	0.52
154.13356	11366.7	0.66
155.11771	372533.8	21.56
157.10820	416152.2	24.08
168.11303	56462.2	3.27
169.09633	27966.6	1.62
169.10906	16960.3	0.98
180.11269	120642.2	6.98
182.16510	13698.4	0.79
183.14917	75536.4	4.37
185.07054	289155.9	16.73
186.12367	56627.8	3.28
197.13931	489324.6	28.32
199.08667	59306.9	3.43
200.17534	489719.3	28.34

Pbistriata#3916-3996 RT: 9.37-9.54 AV: 14

F: FTMS + p ESI d Full ms2 365.2500@hcd35.00 [51.0000-765.0000]

m/z= 50.00000-1000.00000

m/z	Intensity	Relative
203.15064	34080.0	1.97
209.09206	24900.6	1.44
210.15993	106818.6	6.18
214.16581	216997.9	12.56
224.18679	19652.6	1.14
225.17087	42123.0	2.44
227.08097	23757.1	1.37
241.13321	57479.4	3.33
242.19699	204792.4	11.85
244.10801	18878.5	1.09
245.23331	53888.3	3.12
252.16962	11000.2	0.64
255.21779	15655.4	0.91
259.22344	1727876.0	100.00
260.22639	8884.0	0.51
269.12821	23176.3	1.34
272.10312	66029.4	3.82
280.16500	116192.0	6.72
297.19205	46601.2	2.70
314.21793	44132.8	2.55
325.16548	73686.7	4.26
342.19236	34254.5	1.98
343.17606	335752.8	19.43
360.20227	151981.4	8.80
365.24684	121210.9	7.02
454.24407	79592.3	4.61
471.27085	154032.8	8.91
516.32831	113107.7	6.55