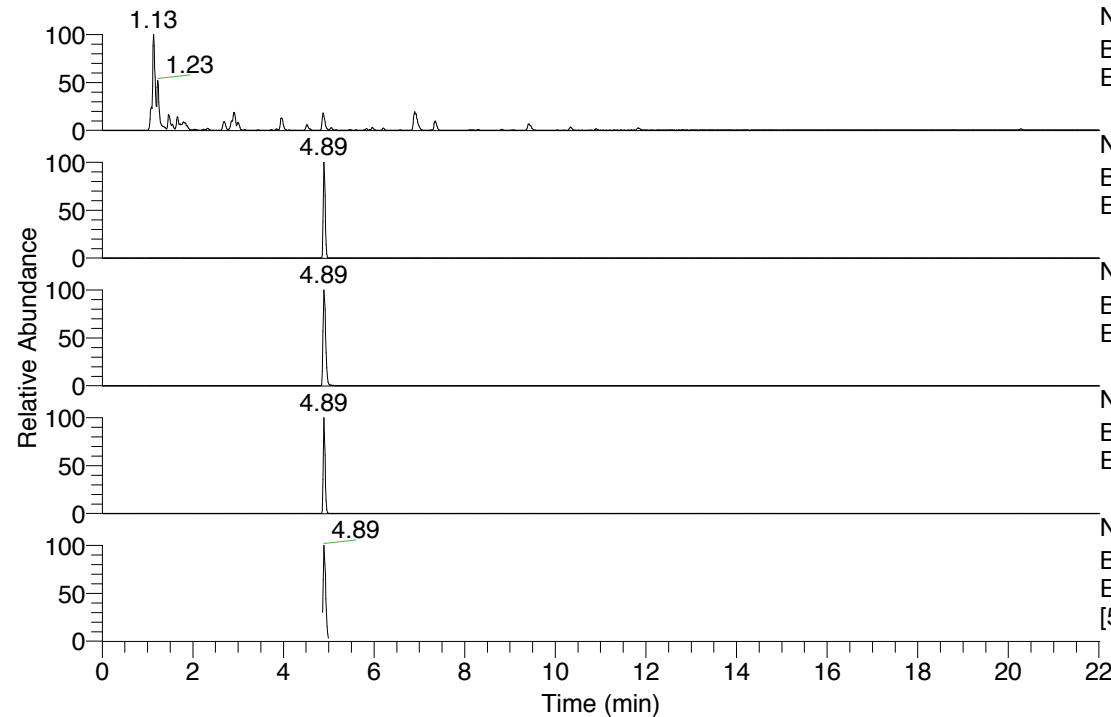


RT: 0.00 - 22.01



NL: 8.91E8
 Base Peak m/z= 100.00000-1500.00000 F: FTMS + p
 ESI Full ms [100.0000-1500.0000] MS Pbistriata

NL: 4.18E6
 Base Peak m/z= 722.46050-722.47494 F: FTMS + p
 ESI Full ms [100.0000-1500.0000] MS Pbistriata

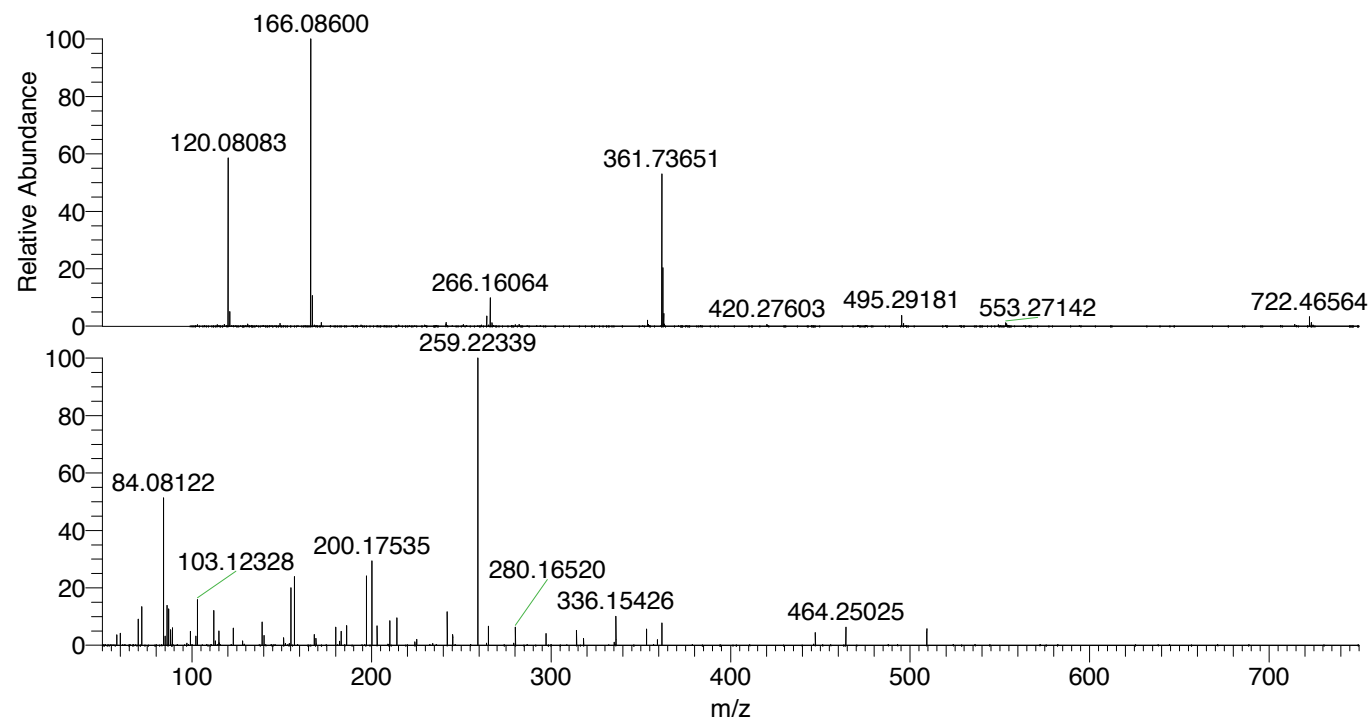
NL: 6.69E7
 Base Peak m/z= 361.73415-361.74139 F: FTMS + p
 ESI Full ms [100.0000-1500.0000] MS Pbistriata

NL: 2.71E7
 Base Peak m/z= 836.45222-836.46894 F: FTMS + p
 ESI Full ms [100.0000-1500.0000] MS Pbistriata

NL: 5.03E6
 Base Peak m/z= 50.00000-1500.00000 F: FTMS + p
 ESI d Full ms2 361.7365@hcd35.00
 [50.3333-755.0000] MS Pbistriata

Pbistriata#2068-2128 RT: 4.86-4.99 AV:
 F: FTMS + p ESI d Full ms2 361.7400 ...
 m/z= 50.00000-1000.00000

m/z	Intensity	Relative
58.06585	85904.4	3.70
60.05629	97656.1	4.21
70.06577	210903.3	9.09
72.08142	320433.5	13.81
84.08122	1218527.3	52.52
85.06534	75246.5	3.24
86.06053	325873.3	14.05
86.09692	215025.4	9.27
87.05573	303395.7	13.08
88.03979	125273.2	5.40
89.10771	144029.9	6.21
99.09199	112799.9	4.86
102.09175	77871.9	3.36
103.12328	373034.4	16.08
112.08702	280629.9	12.10
113.10757	35572.2	1.53
115.05048	119569.9	5.15
115.08688	20851.7	0.90
123.04406	143222.3	6.17
128.11816	34032.4	1.47
139.08647	187909.3	8.10
139.09723	68015.3	2.93
140.08171	80726.9	3.48
151.08644	61285.4	2.64
155.11768	469799.3	20.25
157.10804	572912.1	24.69
168.11309	86333.4	3.72
169.09665	57463.9	2.48
180.11272	145057.7	6.25
182.16555	32136.6	1.39
183.14938	115470.0	4.98
186.12330	161105.3	6.94
197.13930	560835.6	24.17
200.17535	682924.3	29.44
203.15008	155878.3	6.72
210.15954	198715.2	8.57
214.16557	226934.8	9.78
224.18618	27033.9	1.17
225.17091	48612.4	2.10
242.19699	280682.3	12.10
245.23361	87766.1	3.78
259.22339	2319956.8	100.00
265.08165	154618.6	6.66
280.16520	144932.2	6.25
297.19261	97195.3	4.19
314.21832	119087.2	5.13
318.14455	56824.6	2.45
335.17215	24655.2	1.06
336.15426	234763.1	10.12
353.18181	132274.0	5.70
359.27568	46319.7	2.00
361.73640	183316.8	7.90
447.22361	107397.8	4.63
464.25025	147372.5	6.35
509.30638	133811.4	5.77



NL: 1.26E8
 Pbistriata#2083 RT: 4.89
 AV: 1 T: FTMS + p ESI Full
 ms [100.0000-1500.0000]

NL: 2.32E6
 Pbistriata#2029-2143 RT:
 4.86-4.99 AV: 11 F: FTMS
 + p ESI d Full ms2
 361.7365@hcd35.00
 [50.3333-755.0000]

Pbistriata#2068-2128 RT: 4.86-4.99 AV: 11

F: FTMS + p ESI d Full ms2 361.7400@hcd35.00 [50.3300-755.0000]

m/z= 50.00000-1000.00000

m/z	Intensity	Relative
58.06585	85904.4	3.70
60.05629	97656.1	4.21
70.06577	210903.3	9.09
72.08142	320433.5	13.81
84.08122	1218527.3	52.52
85.06534	75246.5	3.24
86.06053	325873.3	14.05
86.09692	215025.4	9.27
87.05573	303395.7	13.08
88.03979	125273.2	5.40
89.10771	144029.9	6.21
97.07607	16093.5	0.69
99.09199	112799.9	4.86
102.09175	77871.9	3.36
103.12328	373034.4	16.08
112.08702	280629.9	12.10
113.10757	35572.2	1.53
115.05048	119569.9	5.15
115.08688	20851.7	0.90
123.04406	143222.3	6.17
128.11816	34032.4	1.47
139.08647	187909.3	8.10
139.09723	68015.3	2.93
140.08171	80726.9	3.48
151.08644	61285.4	2.64
152.07016	13221.4	0.57
154.13373	15676.5	0.68
155.11768	469799.3	20.25
157.10804	572912.1	24.69
168.11309	86333.4	3.72
169.09665	57463.9	2.48
169.10882	13374.1	0.58
180.11272	145057.7	6.25
182.16555	32136.6	1.39
183.14938	115470.0	4.98
186.12330	161105.3	6.94
197.13930	560835.6	24.17
200.17535	682924.3	29.44
203.15008	155878.3	6.72

Pbistriata#2068-2128 RT: 4.86-4.99 AV: 11

F: FTMS + p ESI d Full ms2 361.7400@hcd35.00 [50.3300-755.0000]

m/z= 50.00000-1000.00000

m/z	Intensity	Relative
210.15954	198715.2	8.57
214.16557	226934.8	9.78
224.18618	27033.9	1.17
225.17091	48612.4	2.10
234.11401	13205.4	0.57
242.19699	280682.3	12.10
245.23361	87766.1	3.78
259.22339	2319956.8	100.00
264.09818	17789.1	0.77
265.08165	154618.6	6.66
279.18179	16188.5	0.70
280.16520	144932.2	6.25
297.19261	97195.3	4.19
314.21832	119087.2	5.13
318.14455	56824.6	2.45
335.17215	24655.2	1.06
336.15426	234763.1	10.12
353.18181	132274.0	5.70
359.27568	46319.7	2.00
361.73640	183316.8	7.90
447.22361	107397.8	4.63
464.25025	147372.5	6.35
509.30638	133811.4	5.77