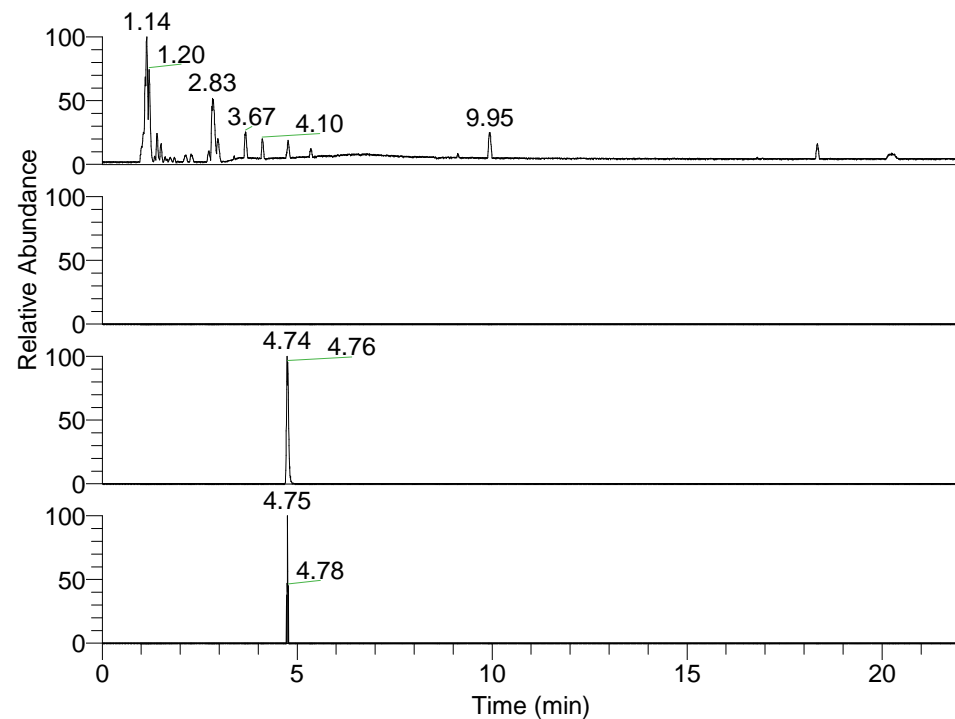


RT: 0.00 - 22.01

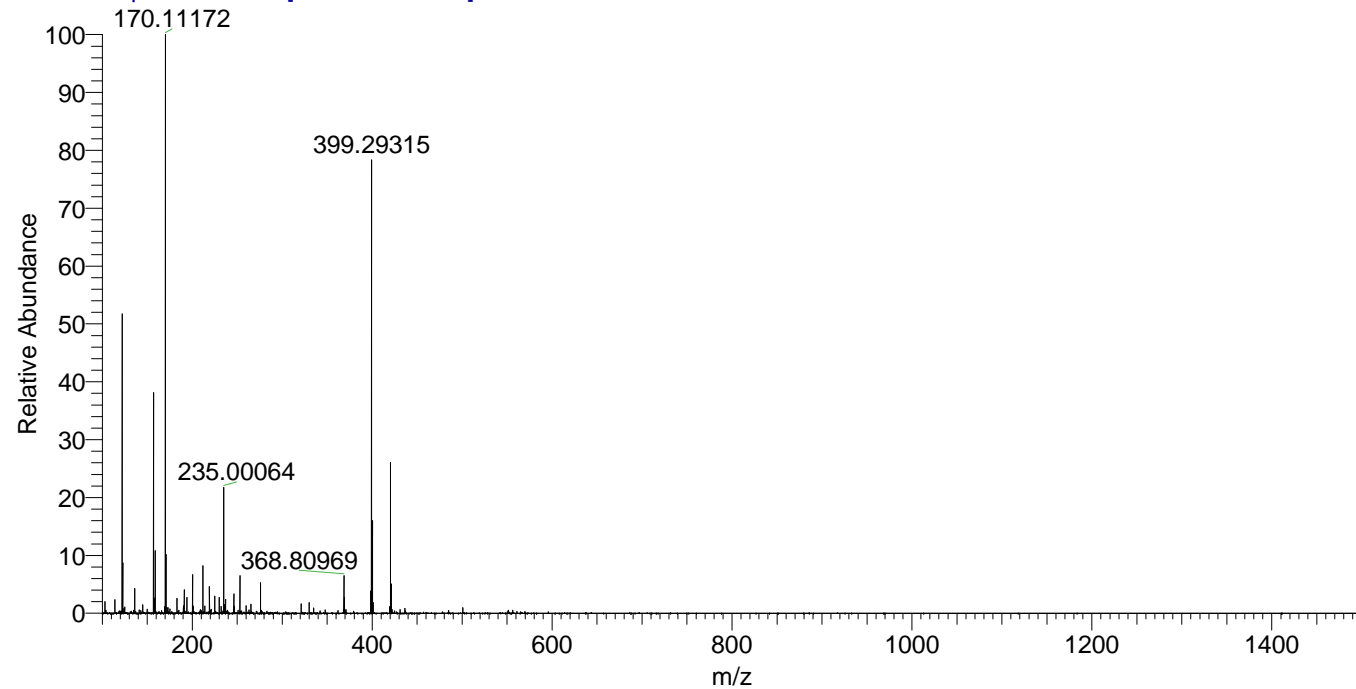


NL: 3.85E8
 Base Peak m/z= 100.00000-1500.00000 F: FTMS + p ESI Full ms [100.00-1500.00] MS Pbistriata_HDX
 NL: 0
 Base Peak m/z= 735.60119-735.60855 F: FTMS + p ESI Full ms [100.00-1500.00] MS Pbistriata_HDX
 NL: 2.77E6
 Base Peak m/z= 368.80765-368.81133 F: FTMS + p ESI Full ms [100.00-1500.00] MS Pbistriata_HDX
 NL: 2.25E4
 Base Peak m/z= 850.59976-850.60826 F: FTMS + p ESI Full ms [100.00-1500.00] MS Pbistriata_HDX

Pbistriata_HDX#771 RT: 4.74
 T: FTMS + p ESI Full ms [100.00-1500.00]
 m/z= 368.00000-369.00000

m/z	Intensity	Relative	Delta (ppm)	Composition
368.80969	2769024.5	100.00	-0.05	C ₃₄ H ₄₉ ² H ₁₆ O ₅ N ₁₂
			2.05	C ₃₄ H ₄₇ ² H ₁₇ O ₅ N ₁₂
			-2.15	C ₃₄ H ₅₁ ² H ₁₅ O ₅ N ₁₂
			4.15	C ₃₄ H ₄₅ ² H ₁₈ O ₅ N ₁₂
			-4.24	C ₃₄ H ₅₃ ² H ₁₄ O ₅ N ₁₂
			6.25	C ₃₄ H ₄₃ ² H ₁₉ O ₅ N ₁₂
			-6.34	C ₃₄ H ₅₅ ² H ₁₃ O ₅ N ₁₂
			8.35	C ₃₄ H ₄₁ ² H ₂₀ O ₅ N ₁₂
			-8.44	C ₃₄ H ₅₇ ² H ₁₂ O ₅ N ₁₂

Pbistriata_HDX #771 RT: 4.74 AV: 1 NL: 4.13E7
 T: FTMS + p ESI Full ms [100.00-1500.00]



Pbistriata_HDX #771 RT: 4.74 AV: 1 NL: 2.70E6
 T: FTMS + p ESI Full ms [100.00-1500.00]

