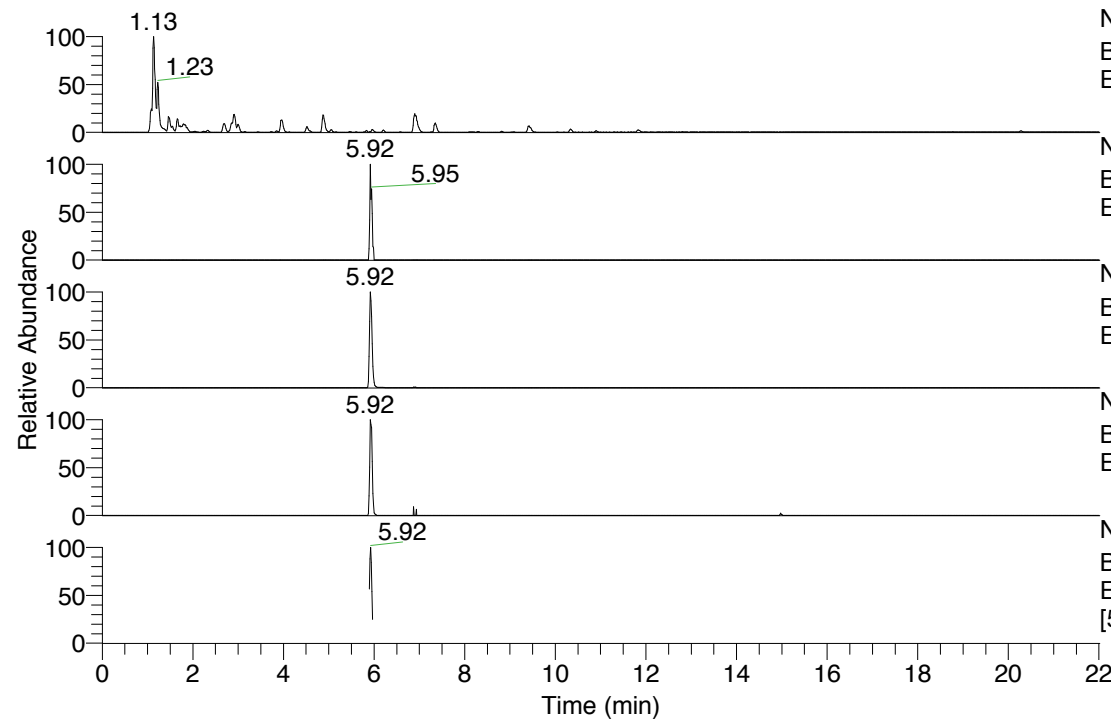


RT: 0.00 - 22.01



NL: 8.91E8  
 Base Peak m/z= 100.00000-1500.00000 F: FTMS + p  
 ESI Full ms [100.0000-1500.0000] MS Pbistriata

NL: 6.66E4  
 Base Peak m/z= 719.49724-719.51164 F: FTMS + p  
 ESI Full ms [100.0000-1500.0000] MS Pbistriata

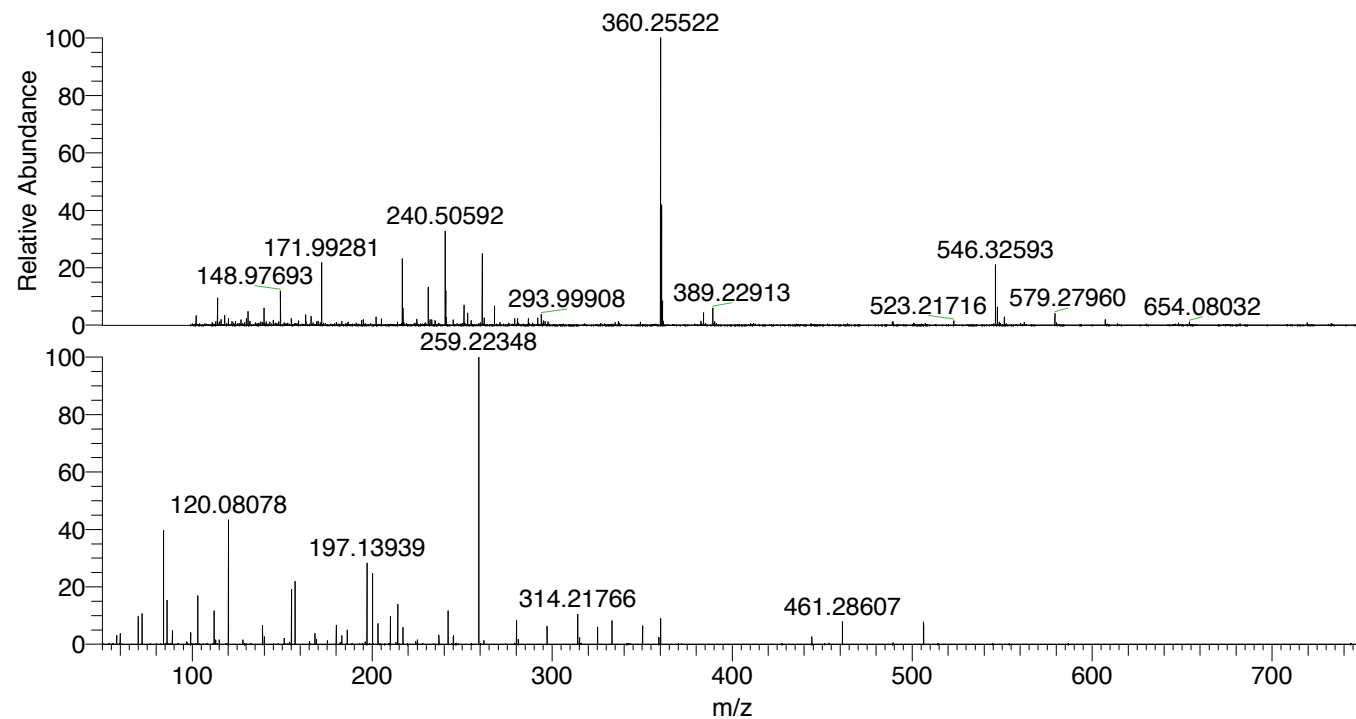
NL: 8.76E6  
 Base Peak m/z= 360.25253-360.25973 F: FTMS + p  
 ESI Full ms [100.0000-1500.0000] MS Pbistriata

NL: 3.74E5  
 Base Peak m/z= 833.48897-833.50563 F: FTMS + p  
 ESI Full ms [100.0000-1500.0000] MS Pbistriata

NL: 6.96E5  
 Base Peak m/z= 50.00000-1500.00000 F: FTMS + p  
 ESI Full ms2 360.2551@hcd35.00  
 [50.3333-755.0000] MS Pbistriata

Pbistriata#2494-2525 RT: 5.90-5.97  
 F: FTMS + p ESI d Full ms2 360.26 ...  
 m/z= 50.00000-1000.00000

m/z	Intensity	Relative
58.06588	14344.4	3.17
60.05634	17061.1	3.77
70.06576	43582.4	9.62
72.08142	50358.0	11.12
84.08124	182706.5	40.34
86.06051	71135.6	15.71
86.09689	37836.6	8.36
89.10780	21948.6	4.85
99.09198	18906.0	4.17
103.12328	78206.8	17.27
112.08699	52528.9	11.60
113.10761	6922.0	1.53
115.08665	6887.2	1.52
120.08078	203562.4	44.95
128.11808	6947.3	1.53
139.08647	29820.5	6.58
139.09758	18036.5	3.98
140.08185	12208.3	2.70
151.08619	9112.9	2.01
155.11763	88461.0	19.53
157.10799	101094.0	22.32
168.11319	17129.5	3.78
169.09636	8267.1	1.83
169.10916	5622.5	1.24
175.08639	5624.2	1.24
180.11285	29861.5	6.59
183.14906	14041.4	3.10
186.12337	22462.2	4.96
197.13939	127798.2	28.22
200.17532	111756.4	24.68
203.14975	32676.0	7.22
210.15964	44506.6	9.83
214.11874	20733.2	4.58
214.16549	63430.3	14.01
217.09716	26753.2	5.91
225.17066	6692.0	1.48
237.08714	14676.3	3.24
242.19659	53691.5	11.86
245.09174	10473.5	2.31
245.23357	14069.7	3.11
259.22348	452861.4	100.00
262.11825	5708.3	1.26
280.16506	37818.8	8.35
281.19686	7328.8	1.62
297.19138	28809.5	6.36
314.21766	47480.5	10.48
315.18132	10232.7	2.26
325.18646	27103.9	5.99
333.19115	37399.1	8.26
350.21739	29985.9	6.62
359.27506	11014.3	2.43
360.25465	41069.9	9.07
444.25914	12145.1	2.68
461.28607	35839.5	7.91
506.34372	35202.7	7.77



NL: 8.37E6  
 Pbistriata#2503 RT: 5.92  
 AV: 1 T: FTMS + p ESI Full  
 ms [100.0000-1500.0000]

NL: 4.53E5  
 Pbistriata#2467-2575 RT:  
 5.90-5.97 AV: 6 F: FTMS +  
 p ESI d Full ms2  
 360.2551@hcd35.00  
 [50.3333-755.0000]

Pbistriata#2494-2525 RT: 5.90-5.97 AV: 6

F: FTMS + p ESI d Full ms2 360.2600@hcd35.00 [50.3300-755.0000]

m/z= 50.00000-1000.00000

m/z	Intensity	Relative
58.06588	14344.4	3.17
60.05634	17061.1	3.77
70.06576	43582.4	9.62
72.08142	50358.0	11.12
84.08124	182706.5	40.34
84.08650	3790.4	0.84
86.06051	71135.6	15.71
86.09689	37836.6	8.36
89.10780	21948.6	4.85
97.07640	3642.9	0.80
99.09198	18906.0	4.17
103.12328	78206.8	17.27
112.08699	52528.9	11.60
113.10761	6922.0	1.53
115.08665	6887.2	1.52
120.08078	203562.4	44.95
128.11808	6947.3	1.53
139.08647	29820.5	6.58
139.09758	18036.5	3.98
140.08185	12208.3	2.70
151.08619	9112.9	2.01
154.13394	3102.1	0.69
155.11763	88461.0	19.53
157.10799	101094.0	22.32
165.10196	4097.6	0.90
168.11319	17129.5	3.78
169.09636	8267.1	1.83
169.10916	5622.5	1.24
175.08639	5624.2	1.24
180.11285	29861.5	6.59
182.16484	2996.3	0.66
183.14906	14041.4	3.10
186.12337	22462.2	4.96
196.10823	3612.6	0.80
197.13939	127798.2	28.22
200.17532	111756.4	24.68
203.14975	32676.0	7.22
210.15964	44506.6	9.83
213.13557	3052.6	0.67

Pbistriata#2494-2525 RT: 5.90-5.97 AV: 6

F: FTMS + p ESI d Full ms2 360.2600@hcd35.00 [50.3300-755.0000]

m/z= 50.00000-1000.00000

m/z	Intensity	Relative
214.11874	20733.2	4.58
214.16549	63430.3	14.01
217.09716	26753.2	5.91
224.18690	4296.5	0.95
225.17066	6692.0	1.48
237.08714	14676.3	3.24
242.19659	53691.5	11.86
245.09174	10473.5	2.31
245.23357	14069.7	3.11
259.22348	452861.4	100.00
262.11825	5708.3	1.26
280.16506	37818.8	8.35
281.19686	7328.8	1.62
297.19138	28809.5	6.36
314.21766	47480.5	10.48
315.18132	10232.7	2.26
325.18646	27103.9	5.99
333.19115	37399.1	8.26
350.21739	29985.9	6.62
359.27506	11014.3	2.43
360.20928	3330.1	0.74
360.25465	41069.9	9.07
444.25914	12145.1	2.68
461.28607	35839.5	7.91
489.30998	2528.3	0.56
506.34372	35202.7	7.77