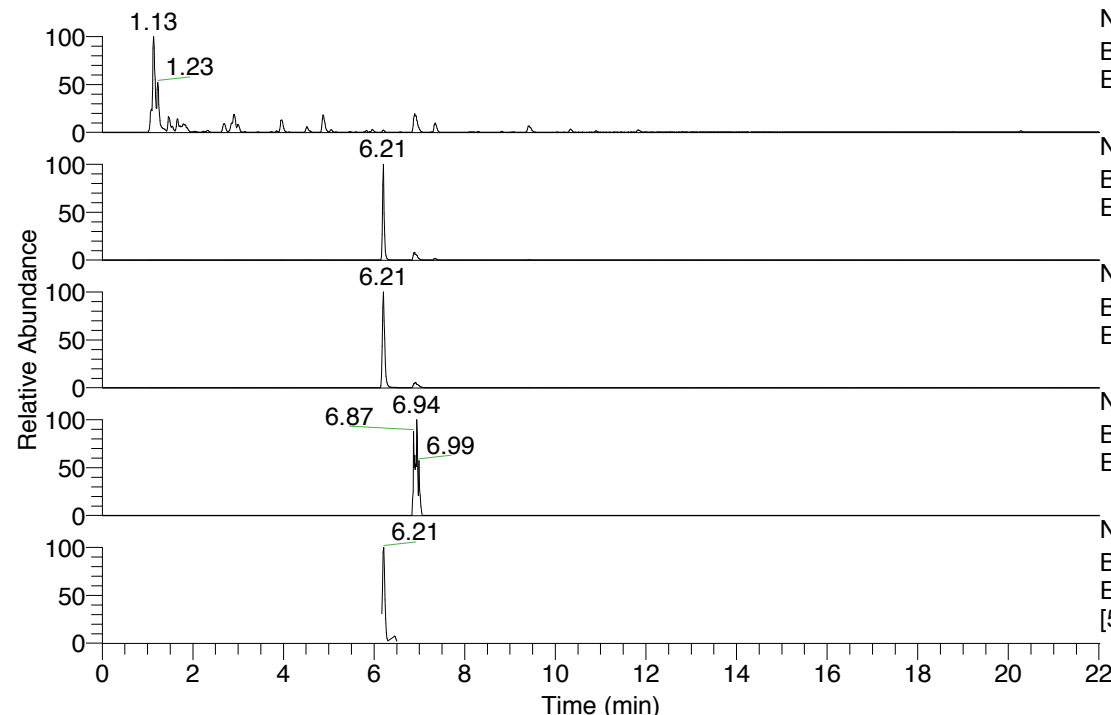


RT: 0.00 - 22.01



NL: 8.91E8  
 Base Peak m/z= 100.00000-1500.00000 F: FTMS + p  
 ESI Full ms [100.0000-1500.0000] MS Pbistriata

NL: 8.99E6  
 Base Peak m/z= 602.40821-602.42025 F: FTMS + p  
 ESI Full ms [100.0000-1500.0000] MS Pbistriata

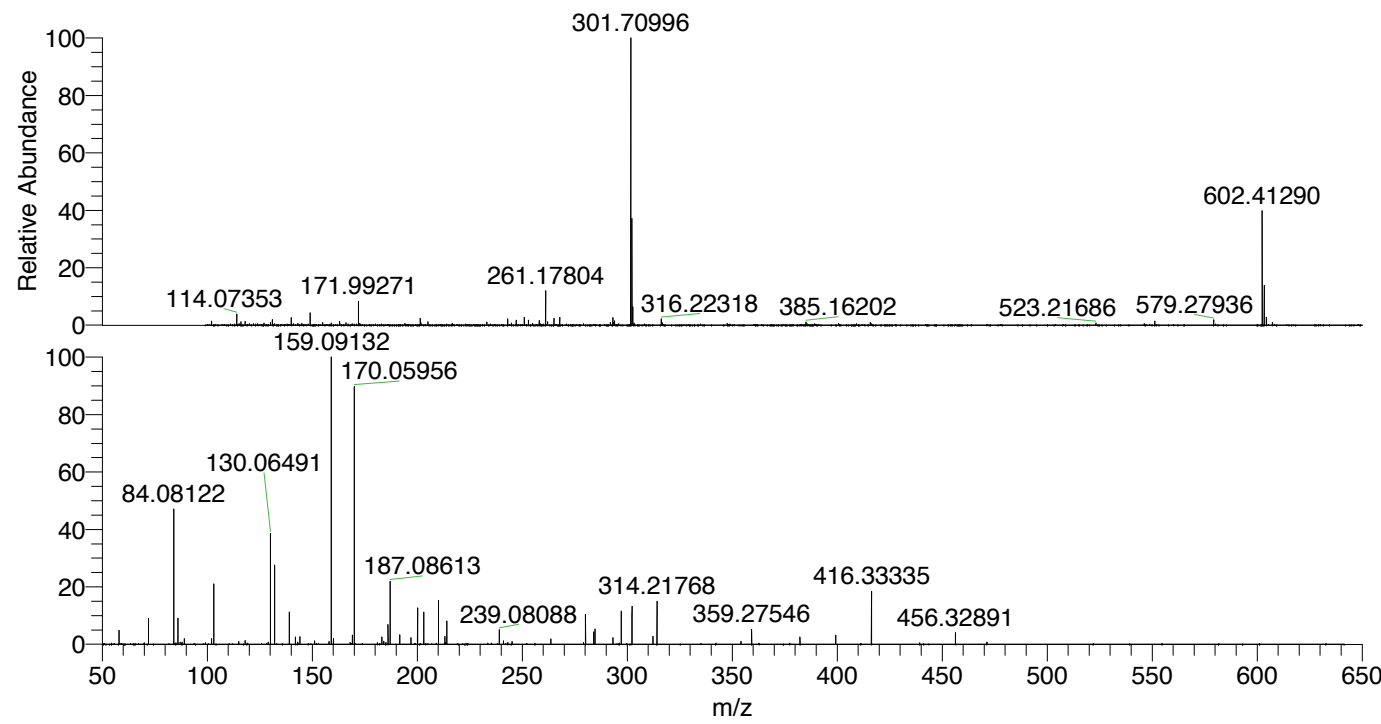
NL: 2.26E7  
 Base Peak m/z= 301.70801-301.71405 F: FTMS + p  
 ESI Full ms [100.0000-1500.0000] MS Pbistriata

NL: 8.44E4  
 Base Peak m/z= 716.39993-716.41425 F: FTMS + p  
 ESI Full ms [100.0000-1500.0000] MS Pbistriata

NL: 1.53E6  
 Base Peak m/z= 50.00000-1500.00000 F: FTMS + p  
 ESI Full ms 301.6977@hcd35.00  
 [50.0000-635.0000] MS Pbistriata

Pbistriata#2612-2636 RT: 6.18-6.24 AV: 5  
 F: FTMS + p ESI d Full ms2 301.7000 ...  
 m/z= 50.00000-1000.00000

m/z	Intensity	Relative
58.06589	53458.2	4.88
72.08134	100893.3	9.22
84.08122	523279.0	47.81
86.09691	103627.5	9.47
87.05591	8608.0	0.79
88.04008	8411.4	0.77
89.10778	21250.4	1.94
102.09161	23532.4	2.15
103.12318	239408.9	21.87
115.05466	11087.4	1.01
118.06533	14799.0	1.35
130.06491	433069.8	39.57
132.08049	314557.7	28.74
139.08623	125205.4	11.44
142.06459	27442.0	2.51
144.08062	31525.4	2.88
151.08651	14237.7	1.30
158.06043	7991.9	0.73
159.09132	1094559.8	100.00
160.07535	23124.1	2.11
169.07596	22684.6	2.07
169.09712	36223.3	3.31
170.05956	998374.4	91.21
183.14908	27306.1	2.49
184.07540	12760.9	1.17
186.12338	74022.9	6.76
186.19627	18213.1	1.66
187.08614	249440.8	22.79
191.64405	38546.6	3.52
197.07038	28788.4	2.63
200.17530	138804.8	12.68
203.14988	124142.5	11.34
210.15977	170068.9	15.54
213.13453	30489.3	2.79
214.09727	93078.4	8.50
239.08087	59430.1	5.43
241.12921	13912.8	1.27
243.14422	7812.7	0.71
245.23428	10988.2	1.00
263.67900	21781.6	1.99
280.16491	116909.2	10.68
284.10273	48160.7	4.40
284.68335	59938.2	5.48
293.19731	25219.9	2.30
297.19112	128764.5	11.76
302.29076	145981.9	13.34
312.27503	32324.5	2.95
314.21771	170493.2	15.58
354.21313	10740.2	0.98
359.27537	60175.9	5.50
382.28185	28965.1	2.65
399.30713	35536.1	3.25
416.33344	205284.0	18.75
456.32902	45012.6	4.11
471.33902	8683.9	0.79



NL: 2.17E7  
 Pbistriata#2623 RT: 6.21  
 AV: 1 T: FTMS + p ESI Full  
 ms [100.0000-1500.0000]

NL: 8.94E5  
 Pbistriata#2607-2647 RT:  
 6.17-6.26 AV: 7 F: FTMS +  
 p ESI d Full ms2  
 301.6977@hcd35.00  
 [50.0000-635.0000]

Pbistriata#2614-2637 RT: 6.19-6.24 AV: 5

F: FTMS + p ESI d Full ms2 602.4100@hcd35.00 [50.0000-630.0000]

m/z= 50.00000-1000.00000

m/z	Intensity	Relative
58.06585	12637.4	3.74
70.06567	2758.0	0.82
72.08134	86534.9	25.64
84.08121	337474.1	100.00
84.08653	6915.5	2.05
86.09691	65612.0	19.44
89.10769	46375.0	13.74
89.77660	1751.5	0.52
90.82847	1966.9	0.58
96.08110	13810.4	4.09
96.86437	1784.9	0.53
99.09198	37318.4	11.06
100.07617	2294.6	0.68
102.09111	1727.7	0.51
103.12317	90161.5	26.72
129.13833	6102.0	1.81
130.06492	24297.1	7.20
132.08146	2112.2	0.63
139.08631	66683.7	19.76
146.83301	1972.5	0.58
151.08654	24018.4	7.12
152.06996	3900.7	1.16
158.06000	6889.6	2.04
159.09134	139455.2	41.32
165.10278	1934.2	0.57
168.11298	13945.2	4.13
169.07561	2550.0	0.76
169.09707	23496.0	6.96
170.05966	41061.0	12.17
170.12795	4603.9	1.36
181.09626	5467.1	1.62
182.16509	12490.7	3.70
183.14890	23224.4	6.88
184.07547	5083.6	1.51
186.12349	44311.2	13.13
187.08628	8971.0	2.66
196.10804	7171.1	2.12
200.17524	194901.8	57.75
201.10253	3354.1	0.99

Pbistriata#2614-2637 RT: 6.19-6.24 AV: 5

F: FTMS + p ESI d Full ms2 602.4100@hcd35.00 [50.0000-630.0000]

m/z= 50.00000-1000.00000

m/z	Intensity	Relative
202.08598	6777.6	2.01
203.14986	90935.8	26.95
208.14377	2131.7	0.63
209.09243	9235.9	2.74
210.15960	117666.5	34.87
212.17568	7020.1	2.08
213.13433	9602.4	2.85
214.09719	47762.8	14.15
214.11847	34811.3	10.32
215.62929	2277.8	0.67
222.15912	2020.4	0.60
224.10316	1927.5	0.57
224.61780	1758.6	0.52
225.13794	18693.8	5.54
228.13648	1742.4	0.52
231.14554	2539.1	0.75
237.08699	24437.9	7.24
239.08157	2460.1	0.73
241.12854	3255.3	0.96
245.23300	19730.4	5.85
253.12889	2184.2	0.65
254.11397	7840.3	2.32
255.21731	3084.1	0.91
259.05408	1711.9	0.51
269.19579	1750.3	0.52
270.15654	4788.6	1.42
272.10016	2491.3	0.74
276.32644	1974.3	0.59
279.18084	18817.7	5.58
280.16490	94059.1	27.87
281.19668	24748.3	7.33
284.10283	47869.5	14.18
294.02367	1803.0	0.53
296.20848	2297.9	0.68
297.19103	80279.7	23.79
301.12981	16019.4	4.75
307.17617	12424.3	3.68
314.21788	138559.5	41.06
314.25533	1955.8	0.58

Pbistriata#2614-2637 RT: 6.19-6.24 AV: 5

F: FTMS + p ESI d Full ms2 602.4100@hcd35.00 [50.0000-630.0000]

m/z= 50.00000-1000.00000

m/z	Intensity	Relative
324.20191	5046.8	1.50
325.18654	64801.0	19.20
327.18126	2060.3	0.61
336.20360	5815.2	1.72
342.24732	2238.3	0.66
344.20663	2623.5	0.78
352.19681	5307.5	1.57
353.45418	2224.5	0.66
354.19153	16893.2	5.01
355.17572	27507.6	8.15
359.27606	17466.4	5.18
368.24507	4447.5	1.32
370.24250	6125.6	1.82
371.22011	3972.6	1.18
372.20188	55983.4	16.59
382.18638	4678.3	1.39
389.22800	47043.1	13.94
399.21279	7795.4	2.31
438.24920	9345.3	2.77
455.27537	25904.9	7.68
464.66209	2003.3	0.59
466.24296	8418.7	2.49
483.26912	31693.6	9.39
487.31264	1903.9	0.56
500.29644	91470.9	27.10
503.67633	1943.2	0.58
545.35379	52951.3	15.69
602.41233	66752.2	19.78