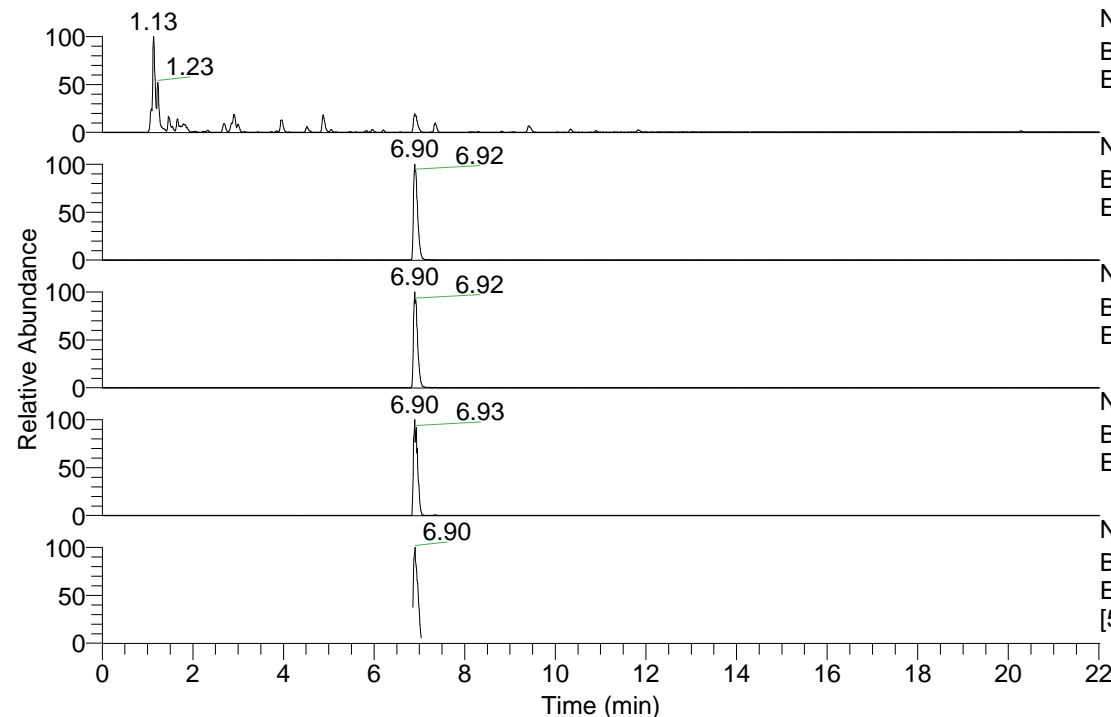


RT: 0.00 - 22.01



NL: 8.91E8
 Base Peak m/z= 100.00000-1500.00000 F: FTMS + p
 ESI Full ms [100.0000-1500.0000] MS Pbistriata

NL: 1.08E8
 Base Peak m/z= 294.71992-294.72286 F: FTMS + p
 ESI Full ms [100.0000-1500.0000] MS Pbistriata

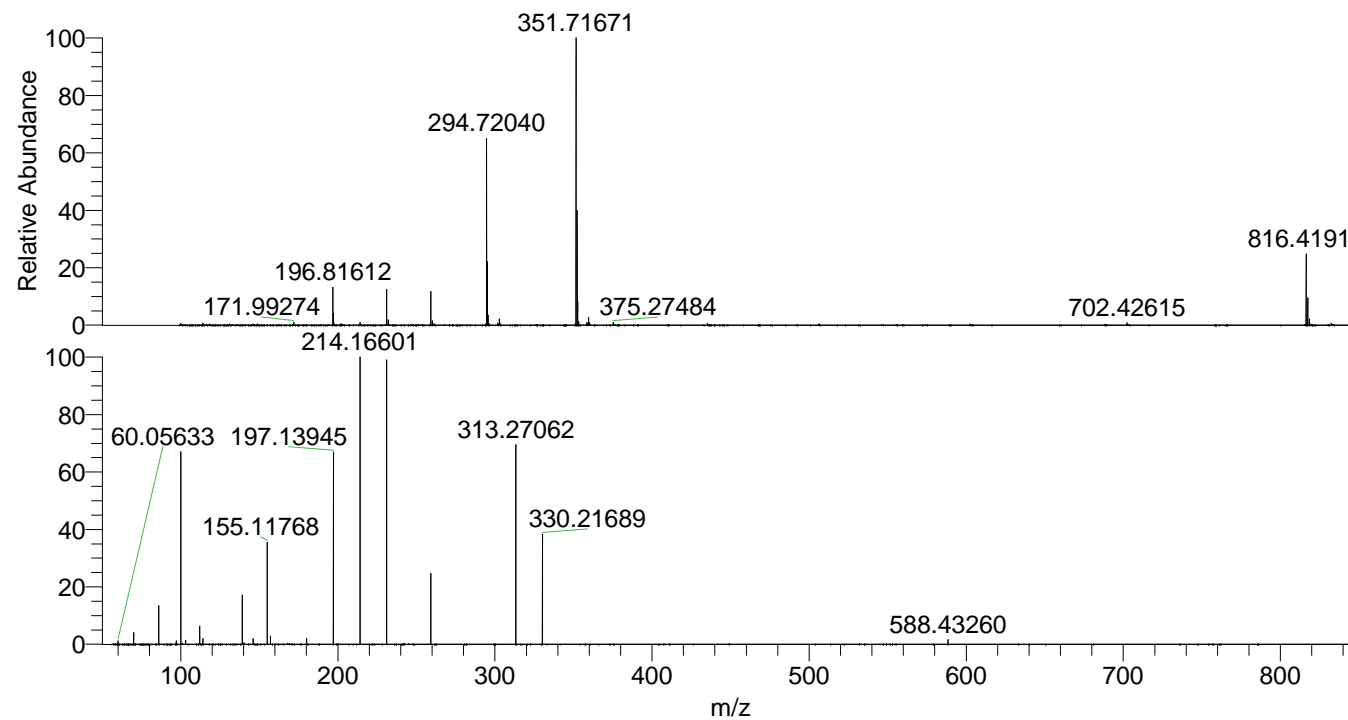
NL: 1.73E8
 Base Peak m/z= 351.71606-351.71958 F: FTMS + p
 ESI Full ms [100.0000-1500.0000] MS Pbistriata

NL: 4.14E7
 Base Peak m/z= 816.41661-816.42477 F: FTMS + p
 ESI Full ms [100.0000-1500.0000] MS Pbistriata

NL: 5.32E6
 Base Peak m/z= 57.66667-1500.00000 F: FTMS + p
 ESI Full ms2 816.4188@hcd35.00
 [56.6667-850.0000] MS Pbistriata

Pbistriata#2884-2974 RT: 6.86-7.04 AV:
 F: FTMS + p ESI d Full ms2 816.4200 ...
 m/z= 57.66667-1000.00000

m/z	Intensity	Relative
60.05633	33883.4	1.17
70.06571	119234.4	4.13
86.06046	386968.5	13.41
97.07635	35695.5	1.24
100.11234	1943325.6	67.37
103.12319	40676.8	1.41
112.08707	187263.0	6.49
114.10267	56390.9	1.95
139.09769	496511.1	17.21
146.06032	59782.1	2.07
155.11768	1022931.5	35.46
157.10832	81609.3	2.83
180.11325	58733.3	2.04
197.13945	1984767.3	68.80
197.15817	34992.5	1.21
214.16601	2884724.0	100.00
231.11247	2865574.5	99.34
259.22371	733588.1	25.43
313.27062	2065509.5	71.60
330.21689	1110285.8	38.49
588.43260	45703.1	1.58



NL: 1.64E8
 Pbistriata#2905 RT: 6.90
 AV: 1 T: FTMS + p ESI Full
 ms [100.0000-1500.0000]

NL: 2.87E6
 Pbistriata#2797-2999 RT:
 6.86-7.04 AV: 16 F: FTMS
 + p ESI d Full ms2
 816.4188@hcd35.00
 [56.6667-850.0000]