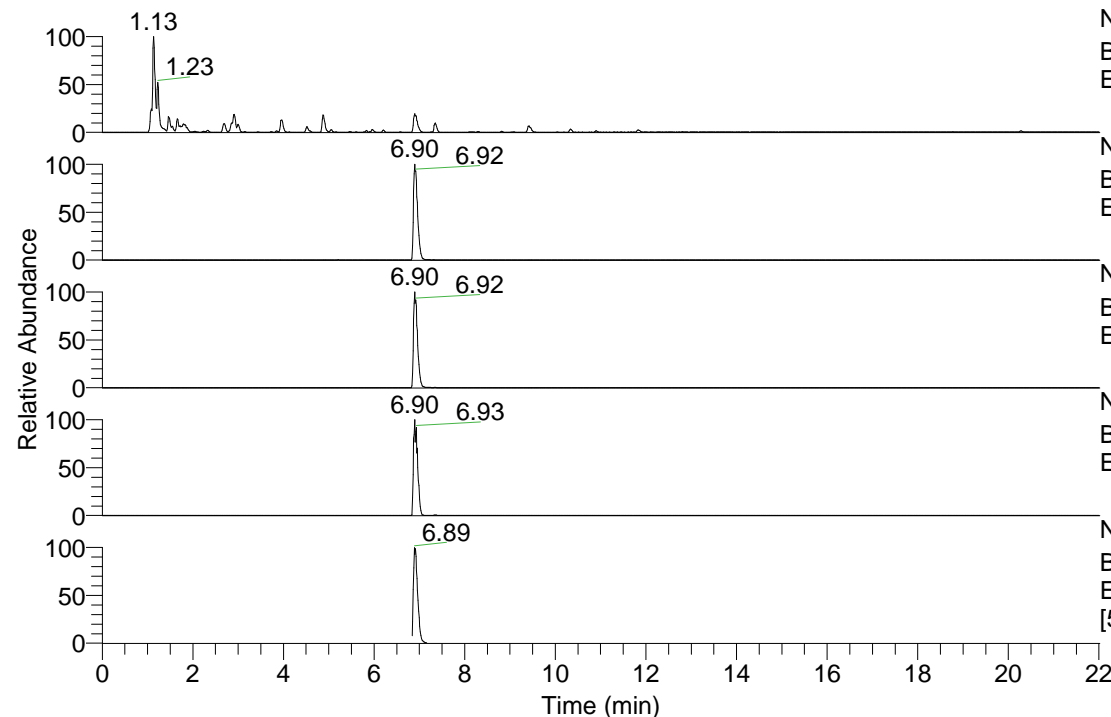


RT: 0.00 - 22.01



NL: 8.91E8
 Base Peak m/z= 100.00000-1500.00000 F: FTMS + p
 ESI Full ms [100.0000-1500.0000] MS Pbistriata

NL: 1.08E8
 Base Peak m/z= 294.71992-294.72286 F: FTMS + p
 ESI Full ms [100.0000-1500.0000] MS Pbistriata

NL: 1.73E8
 Base Peak m/z= 351.71606-351.71958 F: FTMS + p
 ESI Full ms [100.0000-1500.0000] MS Pbistriata

NL: 4.14E7
 Base Peak m/z= 816.41661-816.42477 F: FTMS + p
 ESI Full ms [100.0000-1500.0000] MS Pbistriata

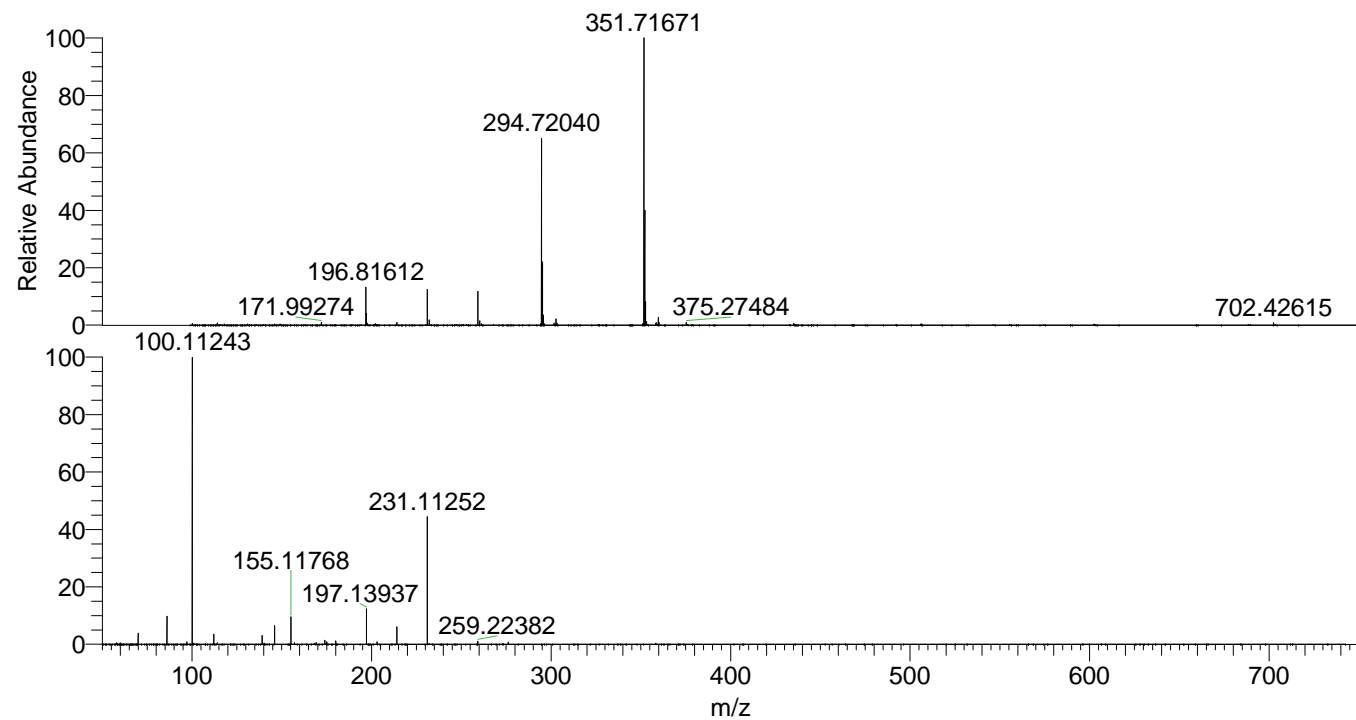
NL: 3.91E7
 Base Peak m/z= 57.66667-1500.00000 F: FTMS + p
 ESI d Full ms2 351.7166@hcd35.00
 [50.0000-735.0000] MS Pbistriata

Pbistriata#2878-3002 RT: 6.84-7.11 AV: 22

F: FTMS + p ESI d Full ms2 351.7200@ ...

m/z= 57.66667-1000.00000

m/z	Intensity	Relative
58.06583	78105.5	0.52
70.06576	588219.4	3.88
86.06055	1499673.1	9.90
97.07644	134994.9	0.89
100.11243	15143888.0	100.00
112.08701	522079.7	3.45
114.10275	81281.7	0.54
139.09753	465175.7	3.07
146.05977	979286.3	6.47
155.11769	1447857.0	9.56
169.10830	89920.4	0.59
174.05489	225073.3	1.49
175.08650	119072.3	0.79
180.11287	178283.6	1.18
197.13937	1845957.3	12.19
203.08139	133173.9	0.88
214.16579	934994.1	6.17
231.11253	6712632.0	44.33
259.22382	163376.8	1.08
276.17040	115946.8	0.77



NL: 1.64E8
 Pbistriata#2905 RT: 6.90
 AV: 1 T: FTMS + p ESI Full
 ms [100.0000-1500.0000]

NL: 1.57E7
 Pbistriata#2841-2999 RT:
 6.84-7.09 AV: 21 F: FTMS
 + p ESI d Full ms2
 351.7166@hcd35.00
 [50.0000-735.0000]