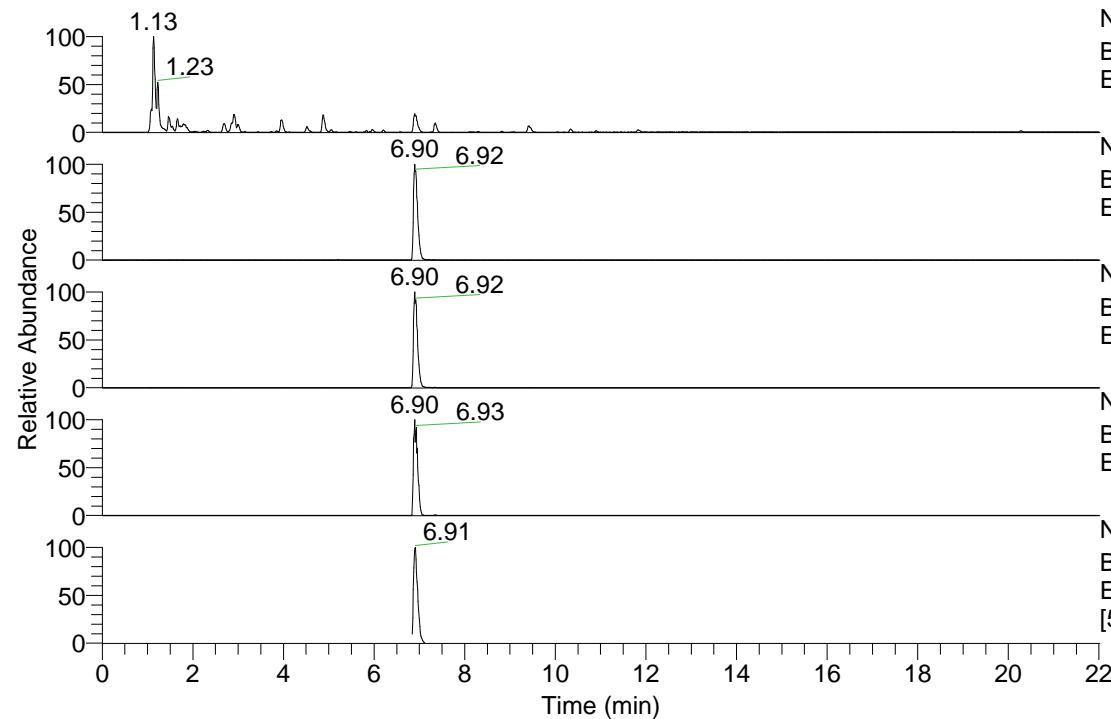


RT: 0.00 - 22.01



NL: 8.91E8
 Base Peak m/z= 100.00000-1500.00000 F: FTMS + p
 ESI Full ms [100.0000-1500.0000] MS Pbistriata

NL: 1.08E8
 Base Peak m/z= 294.71992-294.72286 F: FTMS + p
 ESI Full ms [100.0000-1500.0000] MS Pbistriata

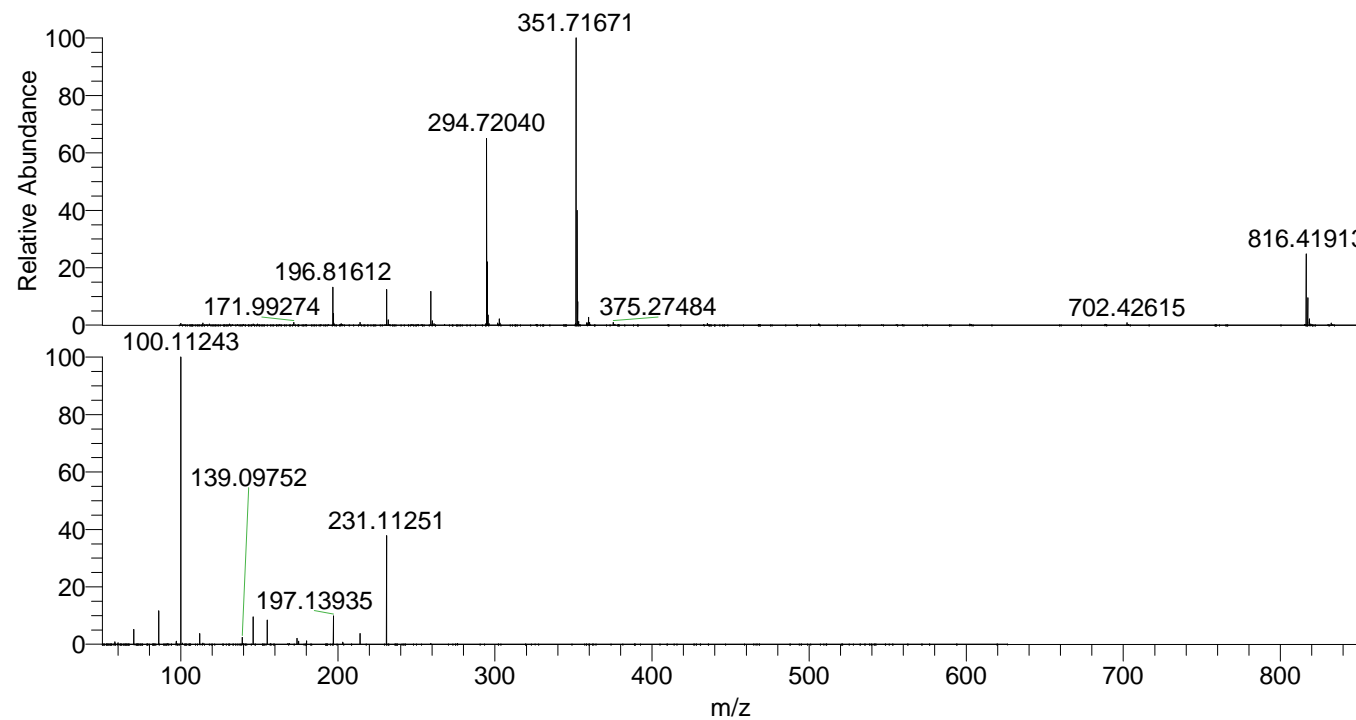
NL: 1.73E8
 Base Peak m/z= 351.71606-351.71958 F: FTMS + p
 ESI Full ms [100.0000-1500.0000] MS Pbistriata

NL: 4.14E7
 Base Peak m/z= 816.41661-816.42477 F: FTMS + p
 ESI Full ms [100.0000-1500.0000] MS Pbistriata

NL: 1.84E7
 Base Peak m/z= 50.00000-1500.00000 F: FTMS + p
 ESI d Full ms2 294.7203@hcd35.00
 [50.0000-620.0000] MS Pbistriata

Pbistriata#2879-3006 RT: 6.84-7.12 AV:
 F: FTMS + p ESI d Full ms2 294.7200 ...
 m/z= 50.00000-1000.00000

m/z	Intensity	Relative
58.06583	63014.7	0.90
60.05628	36927.3	0.53
70.06577	360377.1	5.13
86.06056	829205.9	11.81
97.07634	77916.8	1.11
100.11243	7018797.0	100.00
112.08705	259004.8	3.69
139.09752	169017.1	2.41
146.05982	672805.3	9.59
155.11768	595809.2	8.49
174.05483	147194.4	2.10
175.08668	77940.0	1.11
180.11305	82084.7	1.17
197.13935	690255.3	9.83
203.08127	51489.8	0.73
214.16556	264199.1	3.76
231.11251	2672248.0	38.07



NL: 1.64E8
 Pbistriata#2905 RT: 6.90
 AV: 1 T: FTMS + p ESI Full
 ms [100.0000-1500.0000]

NL: 6.99E6
 Pbistriata#2789-3067 RT:
 6.84-7.12 AV: 22 F: FTMS
 + p ESI d Full ms2
 294.7203@hcd35.00
 [50.0000-620.0000]