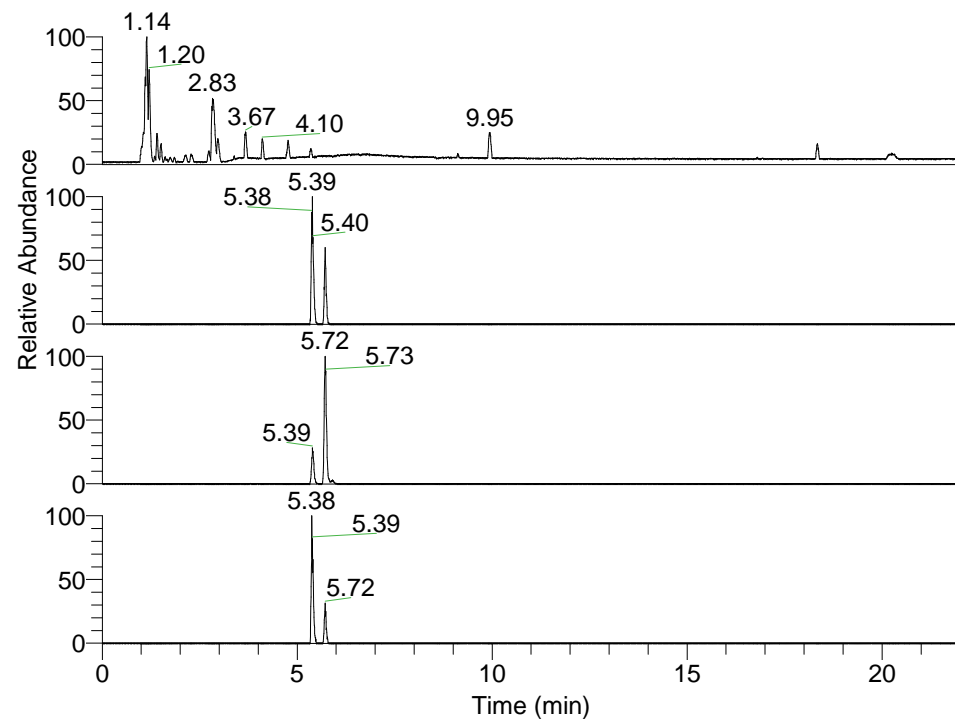


RT: 0.00 - 22.01



NL: 3.85E8
 Base Peak m/z=
 100.00000-1500.00000 F: FTMS + p
 ESI Full ms [100.00-1500.00] MS
 Pbistriata_HDX

NL: 3.70E5
 Base Peak m/z= 584.47916-584.48500
 F: FTMS + p ESI Full ms
 [100.00-1500.00] MS Pbistriata_HDX

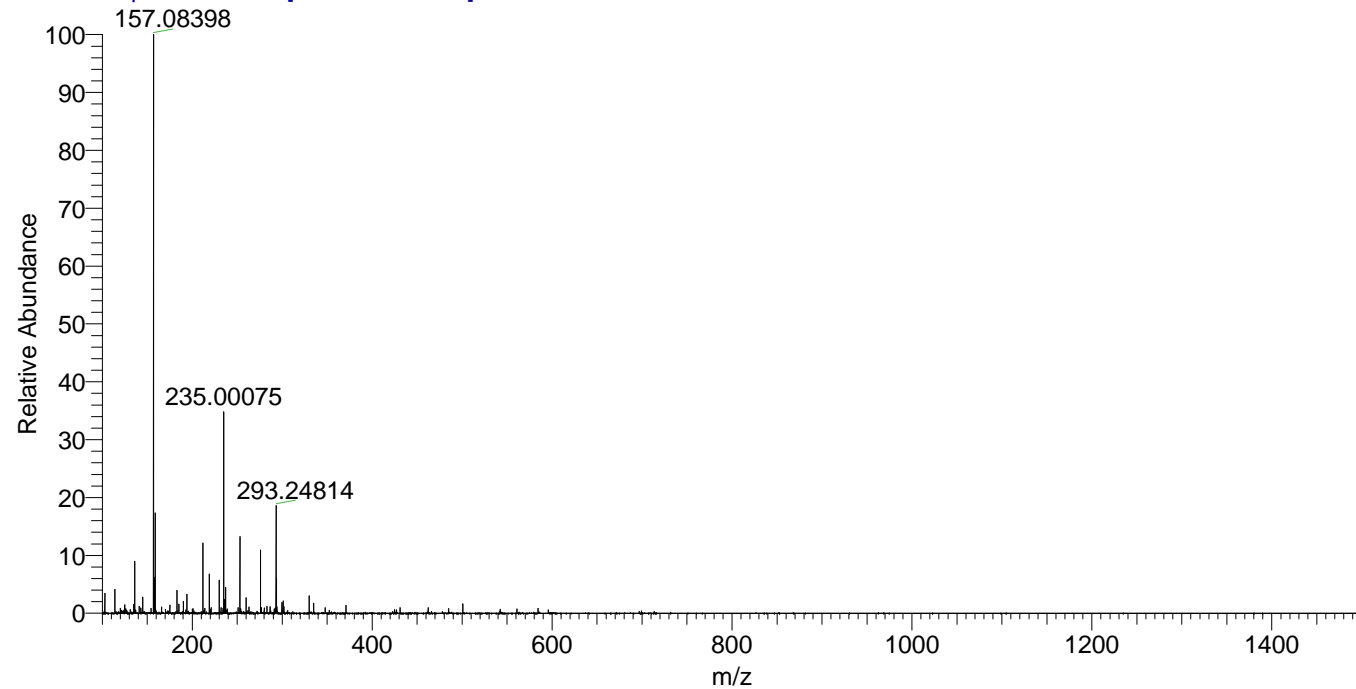
NL: 5.20E6
 Base Peak m/z= 293.24662-293.24956
 F: FTMS + p ESI Full ms
 [100.00-1500.00] MS Pbistriata_HDX

NL: 3.54E5
 Base Peak m/z= 699.47772-699.48472
 F: FTMS + p ESI Full ms
 [100.00-1500.00] MS Pbistriata_HDX

Pbistriata_HDX#934 RT: 5.72
 T: FTMS + p ESI Full ms [100.00-1500.00]
 m/z= 584.00000-585.00000

m/z	Intensity	Relative	Delta (ppm)	Composition
584.48334	222587.7	100.00	0.44	C ₂₉ H ₄₄ ² H ₉ O ₃ N ₉
			-2.21	C ₂₉ H ₄₆ ² H ₈ O ₃ N ₉
			3.09	C ₂₉ H ₄₂ ² H ₁₀ O ₃ N ₉
			-4.86	C ₂₉ H ₄₈ ² H ₇ O ₃ N ₉
			5.74	C ₂₉ H ₄₀ ² H ₁₁ O ₃ N ₉
			-7.50	C ₂₉ H ₅₀ ² H ₆ O ₃ N ₉
			8.39	C ₂₉ H ₃₈ ² H ₁₂ O ₃ N ₉

Pbistriata_HDX #934 RT: 5.72 AV: 1 NL: 2.61E7
 T: FTMS + p ESI Full ms [100.00-1500.00]



Pbistriata_HDX #934 RT: 5.72 AV: 1 NL: 2.19E5
 T: FTMS + p ESI Full ms [100.00-1500.00]

