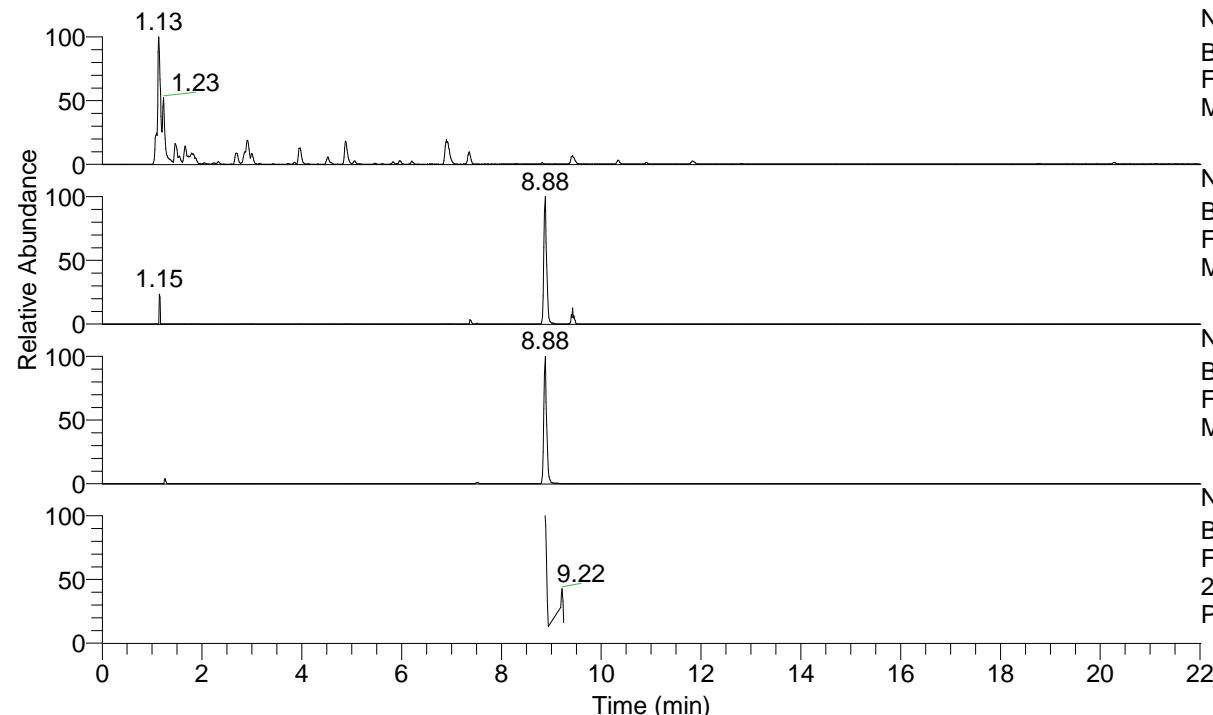


RT: 0.00 - 22.01



NL: 8.91E8
 Base Peak m/z= 100.00000-1500.00000 F:
 FTMS + p ESI Full ms [100.0000-1500.0000]
 MS Pbistriata

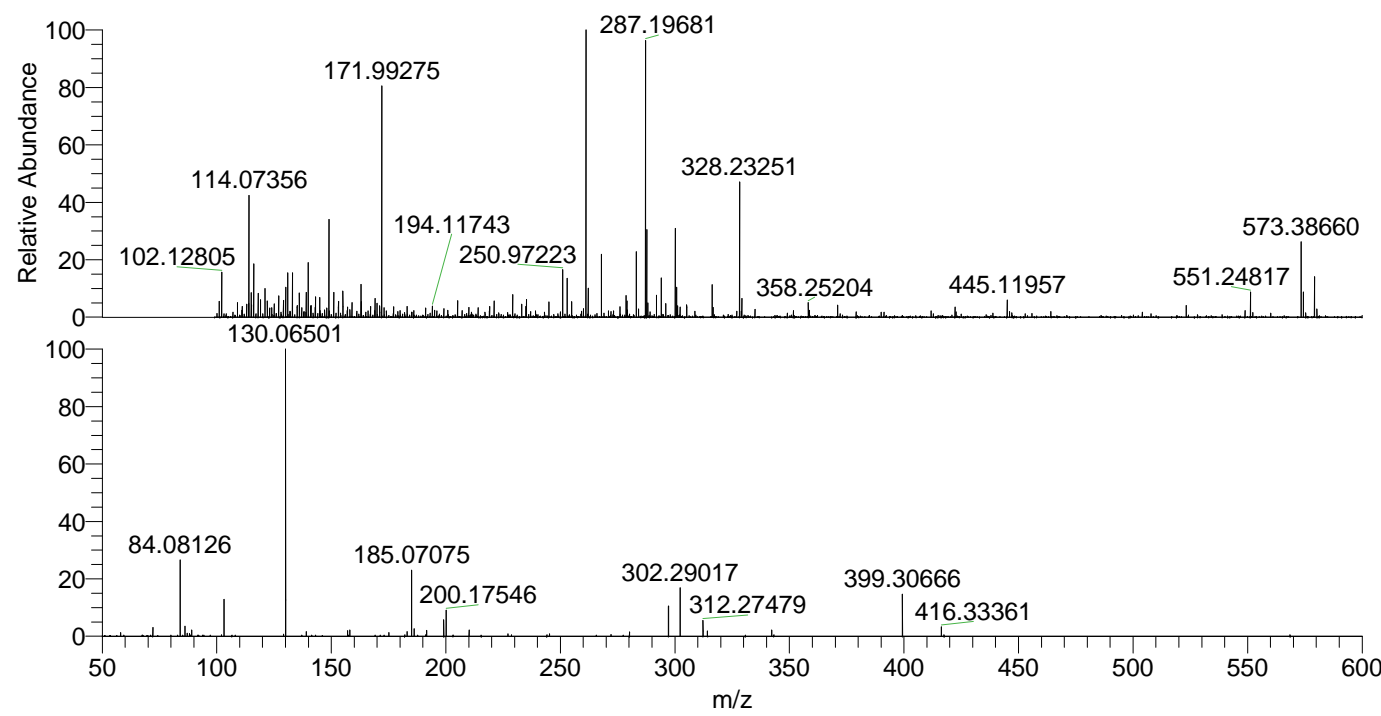
NL: 7.55E5
 Base Peak m/z= 573.38195-573.39341 F:
 FTMS + p ESI Full ms [100.0000-1500.0000]
 MS Pbistriata

NL: 2.84E6
 Base Peak m/z= 287.19488-287.20062 F:
 FTMS + p ESI Full ms [100.0000-1500.0000]
 MS Pbistriata

NL: 4.74E5
 Base Peak m/z= 50.00000-1500.00000 F:
 FTMS + p ESI d Full ms2
 287.1843@hcd35.00 [50.0000-605.0000] MS
 Pbistriata

Pbistriata#3718-3736 RT: 8.87-8.92
 F: FTMS + p ESI d Full ms2 287.18 ...
 m/z= 50.00000-1000.00000

| m/z | Intensity | Relative |
|-----------|-----------|----------|
| 58.06591 | 3980.3 | 1.23 |
| 72.08137 | 9791.2 | 3.03 |
| 84.08126 | 85967.5 | 26.64 |
| 86.09687 | 10992.1 | 3.41 |
| 87.05585 | 3421.8 | 1.06 |
| 88.03965 | 2938.1 | 0.91 |
| 89.10773 | 7071.9 | 2.19 |
| 103.12324 | 40402.9 | 12.52 |
| 129.10237 | 2189.2 | 0.68 |
| 130.06501 | 322717.9 | 100.00 |
| 139.08625 | 5015.7 | 1.55 |
| 157.07613 | 6307.5 | 1.95 |
| 158.06015 | 6965.9 | 2.16 |
| 175.08674 | 3912.6 | 1.21 |
| 182.06055 | 1639.1 | 0.51 |
| 183.14945 | 5010.5 | 1.55 |
| 185.07075 | 73725.9 | 22.85 |
| 186.12403 | 8264.7 | 2.56 |
| 191.64392 | 6752.3 | 2.09 |
| 199.08665 | 18497.0 | 5.73 |
| 200.15843 | 3914.2 | 1.21 |
| 200.17546 | 28871.2 | 8.95 |
| 210.16002 | 6663.8 | 2.06 |
| 227.08190 | 2821.1 | 0.87 |
| 244.10962 | 1701.7 | 0.53 |
| 245.23283 | 2812.4 | 0.87 |
| 272.10427 | 1953.1 | 0.61 |
| 280.16606 | 4662.1 | 1.44 |
| 297.19182 | 33913.5 | 10.51 |
| 302.29017 | 53594.6 | 16.61 |
| 312.27479 | 17922.1 | 5.55 |
| 314.21811 | 5919.2 | 1.83 |
| 342.25023 | 6770.1 | 2.10 |
| 399.30666 | 47357.3 | 14.67 |
| 416.33361 | 10617.1 | 3.29 |



NL: 2.83E6
 Pbistriata#3721 RT: 8.88
 AV: 1 T: FTMS + p ESI Full
 ms [100.0000-1500.0000]

NL: 3.13E5
 Pbistriata#3712-3740 RT:
 8.87-8.92 AV: 4 F: FTMS +
 p ESI d Full ms2
 287.1843@hcd35.00
 [50.0000-605.0000]