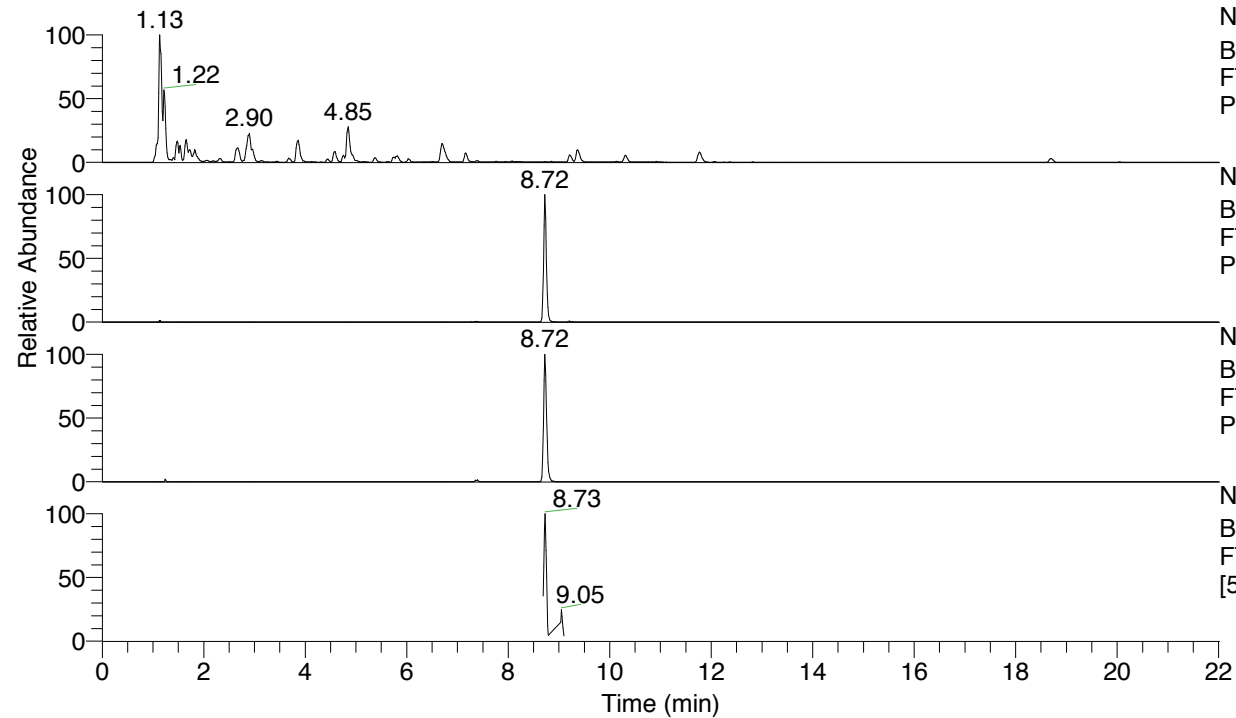


RT: 0.00 - 22.01



NL: 4.34E8
 Base Peak m/z= 100.00000-1500.00000 F:
 FTMS + p ESI Full ms [100.00-1500.00] MS
 Pbistriata20

NL: 2.93E6
 Base Peak m/z= 573.38481-573.39055 F:
 FTMS + p ESI Full ms [100.00-1500.00] MS
 Pbistriata20

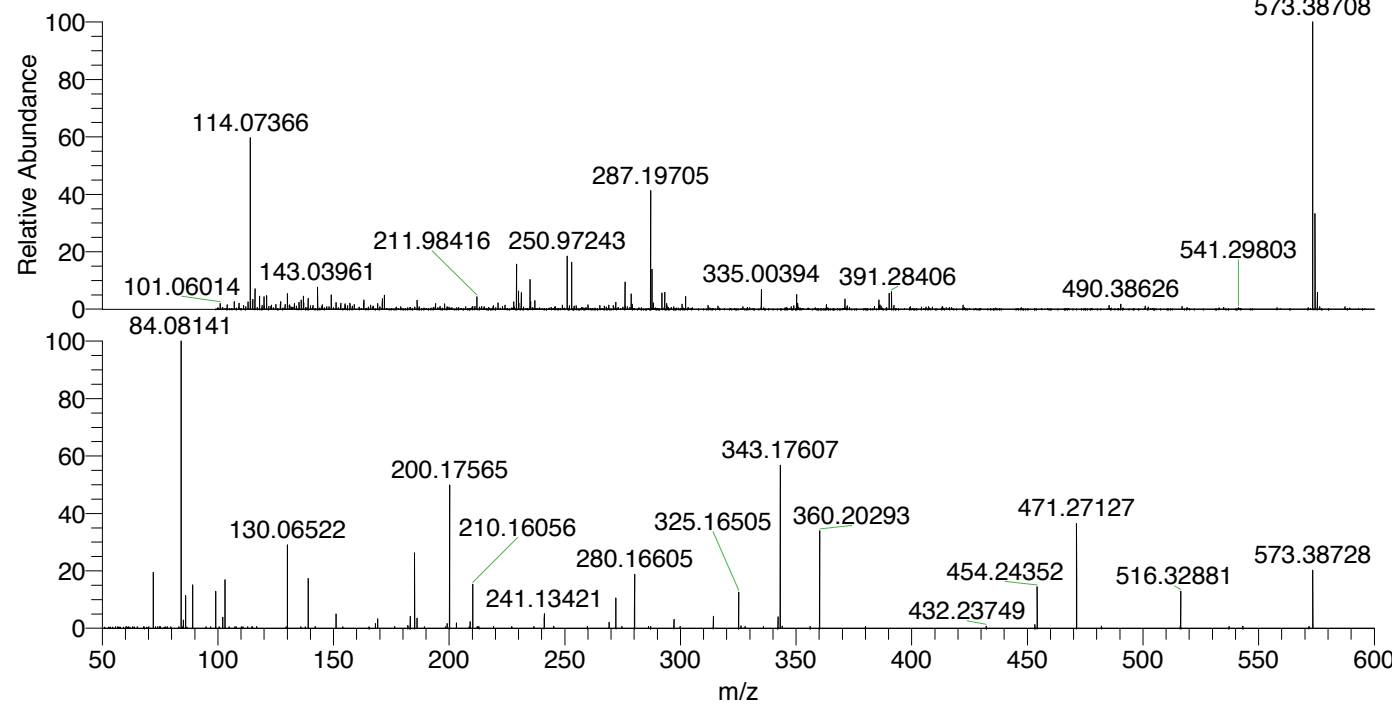
NL: 1.22E6
 Base Peak m/z= 287.19631-287.19919 F:
 FTMS + p ESI Full ms [100.00-1500.00] MS
 Pbistriata20

NL: 2.34E5
 Base Peak m/z= 50.00000-1500.00000 F:
 FTMS + p ESI d Full ms2 573.36@hcd35.00
 [50.00-605.00] MS Pbistriata20

Pbistriata20#3588-3621 RT: 8.69-8.77

F: FTMS + p ESI d Full ms2 573.36 ...
 m/z= 50.00000-1000.00000

m/z	Intensity	Relative
72.08147	24884.0	18.96
84.08141	131228.8	100.00
85.06540	3654.5	2.78
86.09709	14513.1	11.06
89.10794	19449.4	14.82
99.09213	16396.2	12.49
102.09194	4967.6	3.79
103.12353	22229.3	16.94
116.82483	775.1	0.59
130.06521	36417.7	27.75
139.08687	22121.5	16.86
151.08706	6274.1	4.78
168.11259	2020.4	1.54
169.09752	4184.7	3.19
182.16601	1293.6	0.99
183.14950	5408.3	4.12
185.07074	34066.4	25.96
186.12370	4443.3	3.39
199.08639	2048.9	1.56
200.17564	64225.5	48.94
203.15023	2372.5	1.81
209.09327	2831.2	2.16
210.16058	19564.8	14.91
212.14171	775.7	0.59
212.88214	792.5	0.60
227.08143	828.5	0.63
241.13424	6469.3	4.93
245.23452	922.9	0.70
269.12916	2678.3	2.04
272.10351	13200.1	10.06
280.16614	25422.0	19.37
286.18955	800.2	0.61
297.19319	3825.6	2.92
299.91578	804.7	0.61
314.21978	6160.6	4.69
325.16500	15897.2	12.11
326.15093	999.3	0.76
327.97283	847.9	0.65
342.19099	4986.8	3.80
343.17620	77511.0	59.07
344.02264	870.0	0.66
360.20289	44176.2	33.66
379.97549	834.1	0.64
432.23749	864.4	0.66
453.26236	1641.6	1.25
454.24359	19688.9	15.00
471.27125	47074.7	35.87
482.03992	846.8	0.65
516.13032	828.8	0.63
516.32871	16153.7	12.31
537.19807	777.7	0.59
543.12674	836.0	0.64
543.22208	857.1	0.65
571.78545	835.1	0.64
573.38728	25898.7	19.74



NL: 2.85E6
 Pbistriata20#3601 RT:
 8.72 AV: 1 T: FTMS + p
 ESI Full lock ms
 [100.00-1500.00]

NL: 1.47E5
 Pbistriata20#3580-3619
 RT: 8.69-8.76 AV: 6 F:
 FTMS + p ESI d Full ms2
 573.36@hcd35.00
 [50.00-605.00]

Pbistriata20#3588-3621 RT: 8.69-8.77 AV: 7

F: FTMS + p ESI d Full ms2 573.36@hcd35.00 [50.00-605.00]

m/z= 50.00000-1000.00000

m/z	Intensity	Relative
60.32580	740.1	0.56
68.12904	674.5	0.51
72.08147	24884.0	18.96
72.08923	763.9	0.58
74.78740	738.7	0.56
77.45755	681.8	0.52
80.29269	732.5	0.56
84.08141	131228.8	100.00
85.06540	3654.5	2.78
86.09709	14513.1	11.06
89.10794	19449.4	14.82
99.09213	16396.2	12.49
100.58819	668.7	0.51
102.09194	4967.6	3.79
103.12353	22229.3	16.94
107.40675	660.5	0.50
110.87220	677.4	0.52
112.84693	676.1	0.52
115.00414	701.8	0.53
116.82483	775.1	0.59
128.10248	679.8	0.52
130.06521	36417.7	27.75
135.90523	659.9	0.50
135.93071	686.6	0.52
137.80375	664.0	0.51
139.08687	22121.5	16.86
142.15640	727.8	0.55
151.08706	6274.1	4.78
165.41922	695.0	0.53
168.11259	2020.4	1.54
169.09752	4184.7	3.19
171.54262	720.7	0.55
176.40637	774.8	0.59
182.16601	1293.6	0.99
183.14950	5408.3	4.12
185.07074	34066.4	25.96
186.12370	4443.3	3.39
189.30521	675.0	0.51
198.38112	683.6	0.52

Pbistriata20#3588-3621 RT: 8.69-8.77 AV: 7

F: FTMS + p ESI d Full ms2 573.36@hcd35.00 [50.00-605.00]

m/z= 50.00000-1000.00000

m/z	Intensity	Relative
199.08639	2048.9	1.56
200.17564	64225.5	48.94
203.15023	2372.5	1.81
203.25631	770.1	0.59
208.70493	661.8	0.50
209.09327	2831.2	2.16
210.16058	19564.8	14.91
212.14171	775.7	0.59
212.88214	792.5	0.60
219.18337	764.1	0.58
226.27034	665.1	0.51
227.08143	828.5	0.63
236.60814	744.7	0.57
241.13424	6469.3	4.93
245.23452	922.9	0.70
259.79766	716.6	0.55
269.12916	2678.3	2.04
272.10351	13200.1	10.06
274.68710	768.9	0.59
280.16614	25422.0	19.37
284.26627	753.1	0.57
286.18955	800.2	0.61
287.09820	742.5	0.57
297.19319	3825.6	2.92
299.91578	804.7	0.61
314.21978	6160.6	4.69
325.16500	15897.2	12.11
326.15093	999.3	0.76
327.97283	847.9	0.65
335.88587	745.5	0.57
342.19099	4986.8	3.80
343.17620	77511.0	59.07
344.02264	870.0	0.66
356.12715	760.9	0.58
360.20289	44176.2	33.66
379.97549	834.1	0.64
432.23749	864.4	0.66
453.26236	1641.6	1.25
454.24359	19688.9	15.00

Pbistriata20#3588-3621 RT: 8.69-8.77 AV: 7

F: FTMS + p ESI d Full ms2 573.36@hcd35.00 [50.00-605.00]

m/z= 50.00000-1000.00000

m/z	Intensity	Relative
471.27125	47074.7	35.87
482.03992	846.8	0.65
490.86546	702.0	0.53
516.13032	828.8	0.63
516.32871	16153.7	12.31
537.19807	777.7	0.59
543.12674	836.0	0.64
543.22208	857.1	0.65
571.78545	835.1	0.64
573.38728	25898.7	19.74