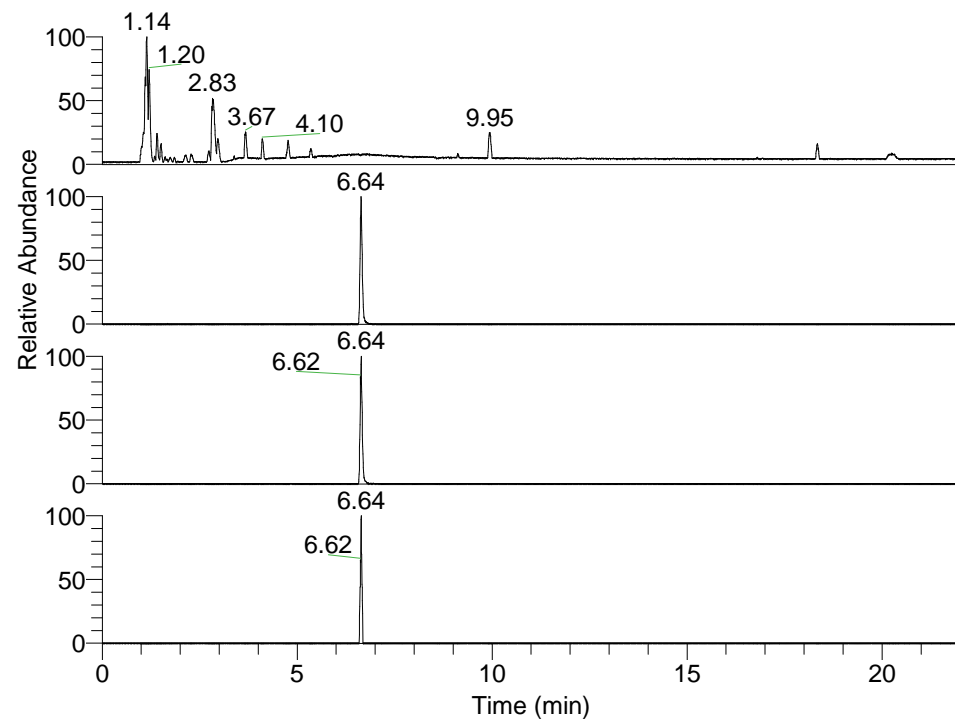


RT: 0.00 - 22.01



NL: 3.85E8
 Base Peak m/z=
 100.00000-1500.00000 F: FTMS + p
 ESI Full ms [100.00-1500.00] MS
 Pbistriata_HDX

NL: 3.20E6
 Base Peak m/z= 291.25072-291.25364
 F: FTMS + p ESI Full ms
 [100.00-1500.00] MS Pbistriata_HDX

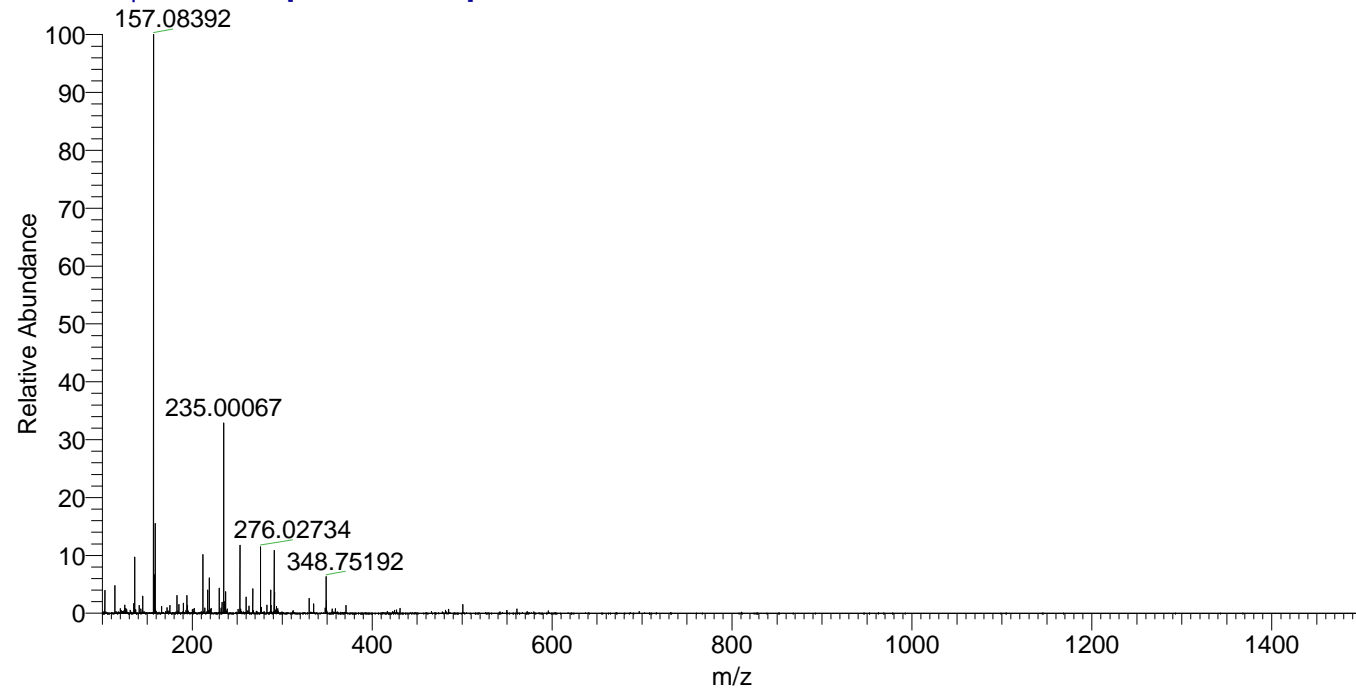
NL: 1.87E6
 Base Peak m/z= 348.75018-348.75366
 F: FTMS + p ESI Full ms
 [100.00-1500.00] MS Pbistriata_HDX

NL: 6.16E4
 Base Peak m/z= 810.48449-810.49259
 F: FTMS + p ESI Full ms
 [100.00-1500.00] MS Pbistriata_HDX

Pbistriata_HDX#1086 RT: 6.64
 T: FTMS + p ESI Full ms [100.00-1500.00]
 m/z= 810.00000-811.00000

m/z	Intensity	Relative	Delta (ppm)	Composition
810.48950	61623.3	100.00	-0.05	C ₃₄ H ₄₈ ² H ₉ O ₆ N ₉ F ₆
			1.86	C ₃₄ H ₄₆ ² H ₁₀ O ₆ N ₉ F ₆
			-1.96	C ₃₄ H ₅₀ ² H ₈ O ₆ N ₉ F ₆
			3.77	C ₃₄ H ₄₄ ² H ₁₁ O ₆ N ₉ F ₆
			-3.87	C ₃₄ H ₅₂ ² H ₇ O ₆ N ₉ F ₆
			5.68	C ₃₄ H ₄₂ ² H ₁₂ O ₆ N ₉ F ₆
			-5.78	C ₃₄ H ₅₄ ² H ₆ O ₆ N ₉ F ₆
			7.59	C ₃₄ H ₄₀ ² H ₁₃ O ₆ N ₉ F ₆
			-7.69	C ₃₄ H ₅₆ ² H ₅ O ₆ N ₉ F ₆
			9.50	C ₃₄ H ₃₈ ² H ₁₄ O ₆ N ₉ F ₆

Pbistriata_HDX #1086 RT: 6.64 AV: 1 NL: 2.85E7
 T: FTMS + p ESI Full ms [100.00-1500.00]



Pbistriata_HDX #1086 RT: 6.64 AV: 1 NL: 5.80E4
 T: FTMS + p ESI Full ms [100.00-1500.00]

