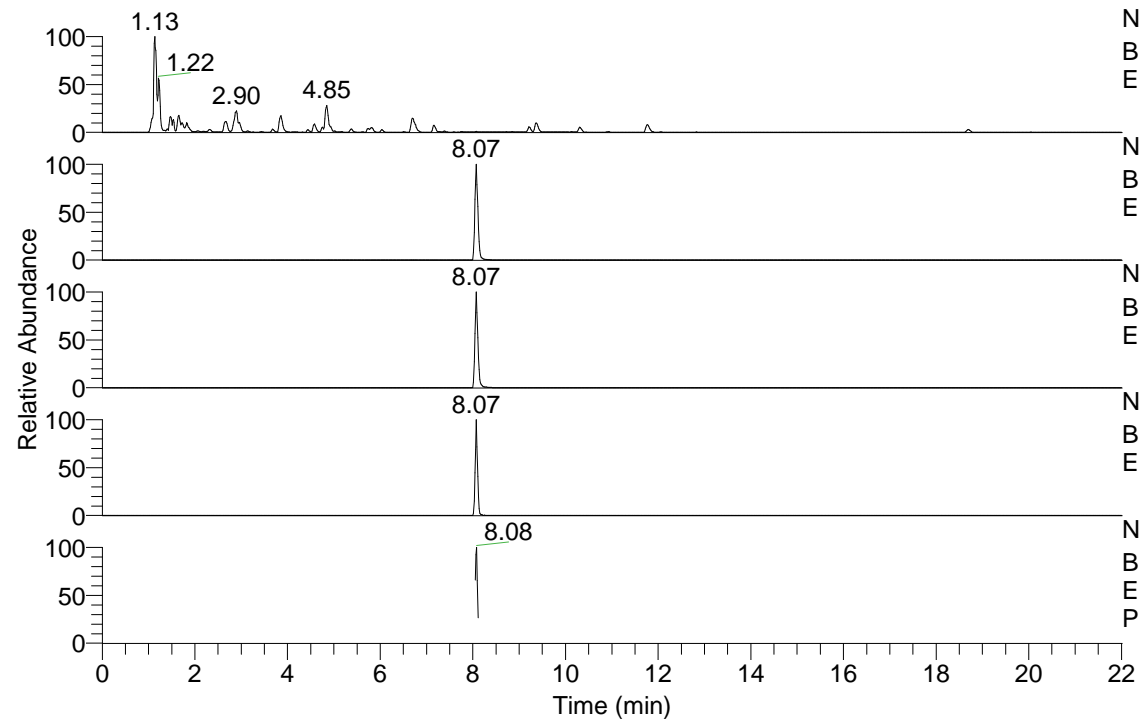


RT: 0.00 - 22.01



NL: 4.34E8

Base Peak m/z= 100.00000-1500.00000 F: FTMS + p  
ESI Full ms [100.00-1500.00] MS Pbistriata20

NL: 4.38E6

Base Peak m/z= 286.72251-286.72537 F: FTMS + p  
ESI Full ms [100.00-1500.00] MS Pbistriata20

NL: 2.24E6

Base Peak m/z= 343.71865-343.72209 F: FTMS + p  
ESI Full ms [100.00-1500.00] MS Pbistriata20

NL: 2.72E6

Base Peak m/z= 800.42177-800.42977 F: FTMS + p  
ESI Full ms [100.00-1500.00] MS Pbistriata20

NL: 8.21E5

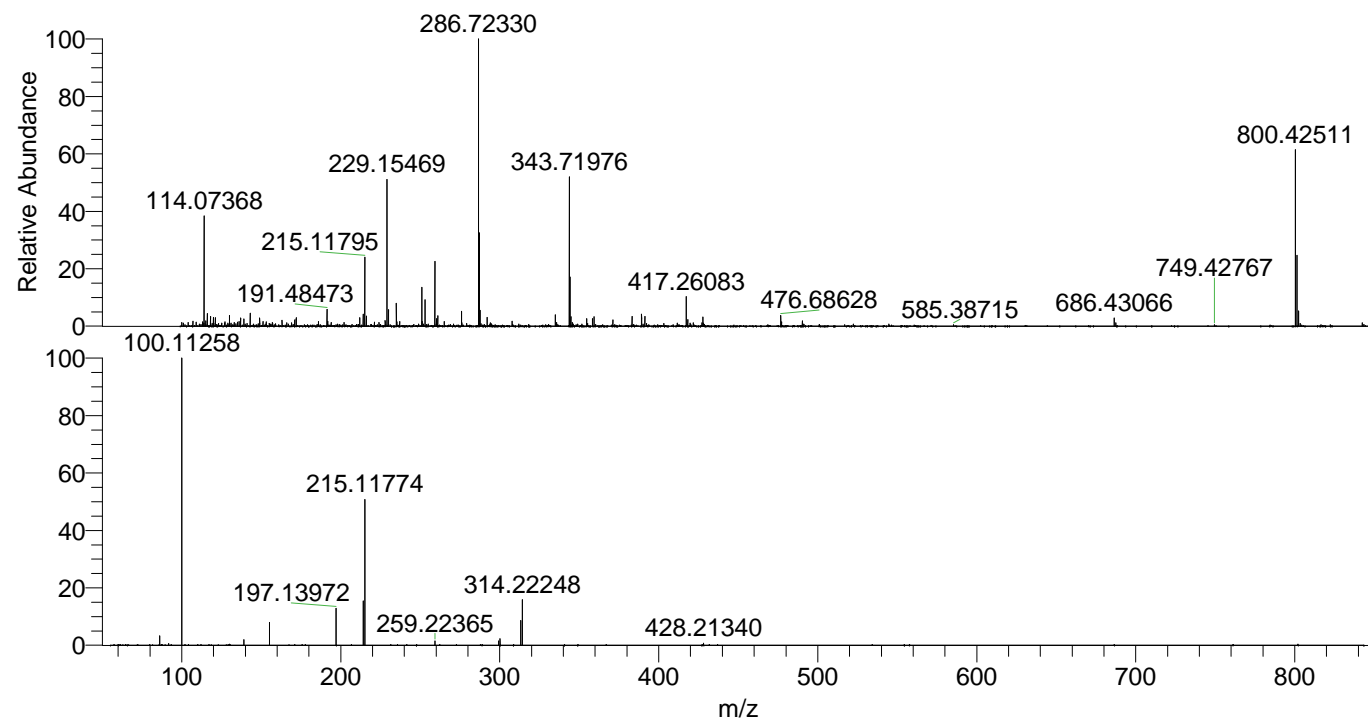
Base Peak m/z= 50.00000-1500.00000 F: FTMS + p  
ESI d Full ms2 800.42@hcd35.00 [55.67-835.00] MS  
Pbistriata20

Pbistriata20#3336-3360 RT: 8.06-8.12

F: FTMS + p ESI d Full ms2 800.42 ...

m/z= 50.00000-1000.00000

m/z	Intensity	Relative
86.06065	18033.0	3.35
91.75725	3127.3	0.58
100.11258	538855.6	100.00
139.09769	10604.6	1.97
155.11798	42906.6	7.96
197.13972	69497.4	12.90
214.16611	83394.4	15.48
215.11774	274531.1	50.95
259.22365	8208.0	1.52
299.25543	8016.7	1.49
300.20674	12264.8	2.28
313.27049	47250.0	8.77
314.22248	85515.3	15.87
428.21340	4251.5	0.79



NL: 4.30E6

Pbistriata20#3343 RT:  
8.07 AV: 1 T: FTMS + p  
ESI Full lock ms  
[100.00-1500.00]

NL: 5.39E5

Pbistriata20#3332-3365  
RT: 8.06-8.12 AV: 5 F:  
FTMS + p ESI d Full ms2  
800.42@hcd35.00  
[55.67-835.00]