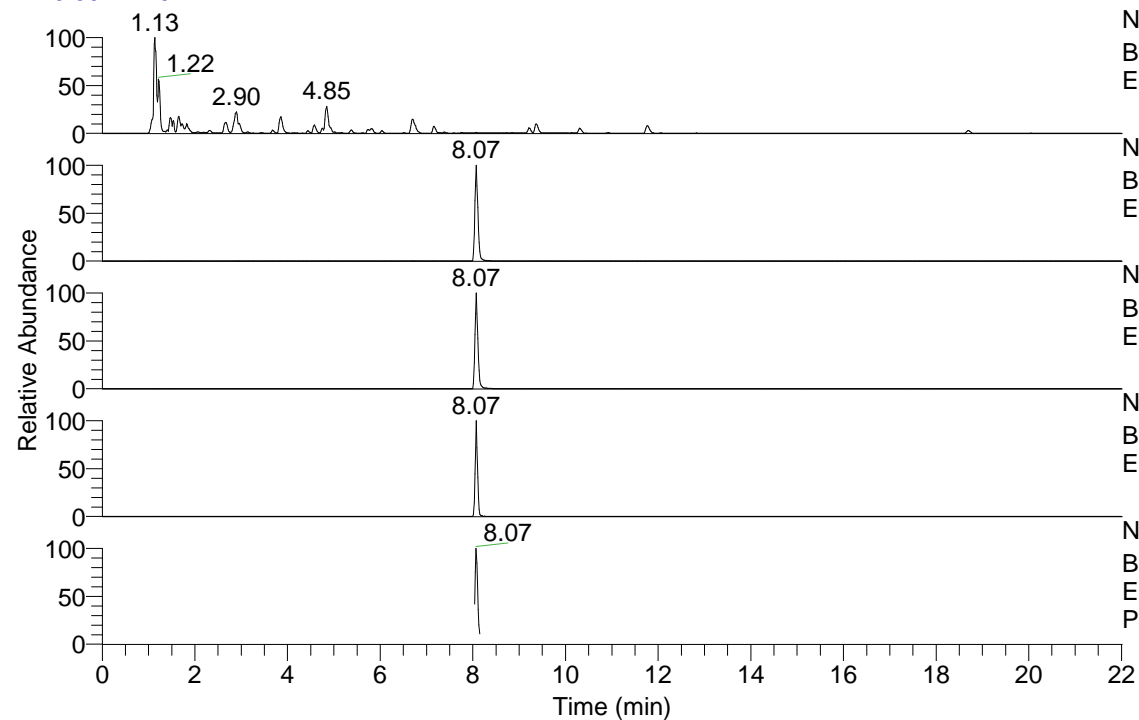


RT: 0.00 - 22.01



NL: 4.34E8

Base Peak m/z= 100.00000-1500.00000 F: FTMS + p
ESI Full ms [100.00-1500.00] MS Pbistriata20

NL: 4.38E6

Base Peak m/z= 286.72251-286.72537 F: FTMS + p
ESI Full ms [100.00-1500.00] MS Pbistriata20

NL: 2.24E6

Base Peak m/z= 343.71865-343.72209 F: FTMS + p
ESI Full ms [100.00-1500.00] MS Pbistriata20

NL: 2.72E6

Base Peak m/z= 800.42177-800.42977 F: FTMS + p
ESI Full ms [100.00-1500.00] MS Pbistriata20

NL: 8.51E5

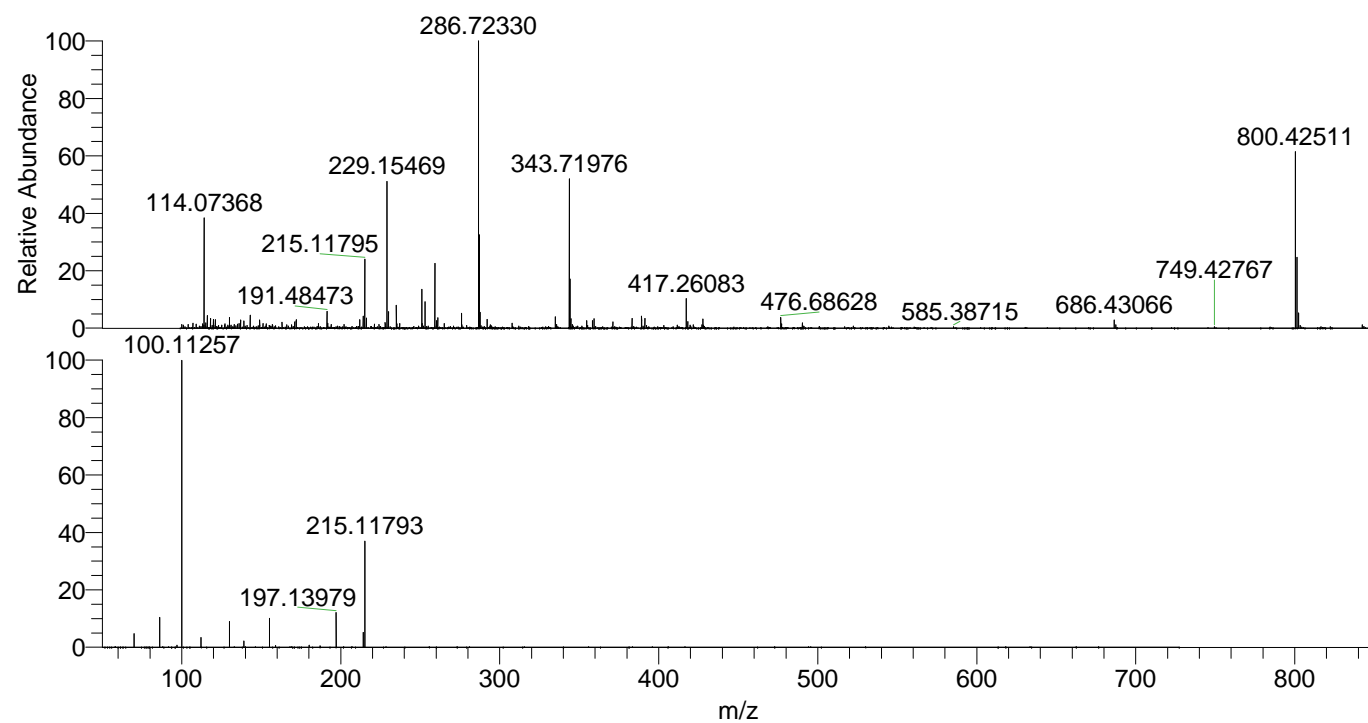
Base Peak m/z= 50.00000-1500.00000 F: FTMS + p
ESI d Full ms2 343.72@hcd35.00 [50.00-720.00] MS
Pbistriata20

Pbistriata20#3335-3365 RT: 8.05-8.13

F: FTMS + p ESI d Full ms2 343.72 ...

m/z= 50.00000-1000.00000

m/z	Intensity	Relative
70.06589	24046.2	4.65
86.06065	54604.5	10.55
97.07659	3452.9	0.67
100.11258	517441.5	100.00
112.08734	17655.3	3.41
130.06524	45976.4	8.89
139.09803	12535.2	2.42
155.11782	53410.6	10.32
159.09188	3603.8	0.70
180.11321	4430.6	0.86
187.08705	2744.4	0.53
197.13978	63120.3	12.20
214.16615	27855.2	5.38
215.11792	197534.1	38.18



NL: 4.30E6

Pbistriata20#3343 RT:
8.07 AV: 1 T: FTMS + p
ESI Full lock ms
[100.00-1500.00]

NL: 4.41E5

Pbistriata20#3245-3434
RT: 8.04-8.15 AV: 8 F:
FTMS + p ESI d Full ms2
343.72@hcd35.00
[50.00-720.00]