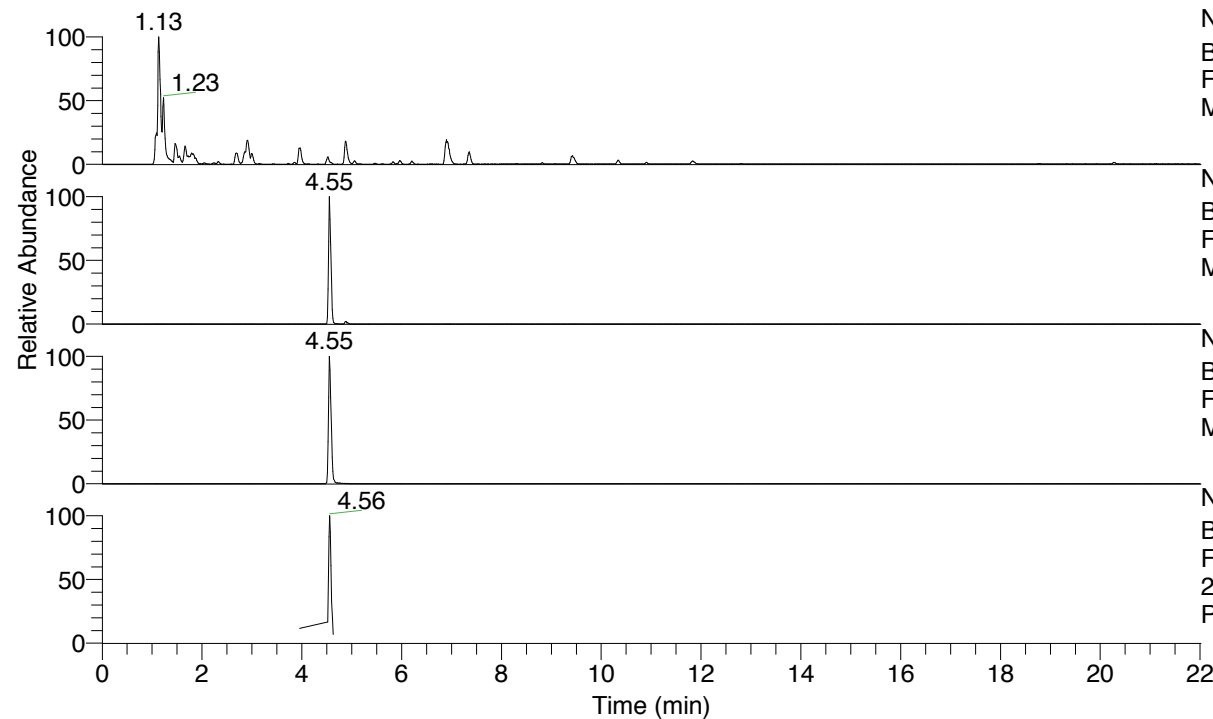


RT: 0.00 - 22.01



NL: 8.91E8  
 Base Peak m/z= 100.00000-1500.00000 F:  
 FTMS + p ESI Full ms [100.0000-1500.0000]  
 MS Pbistriata

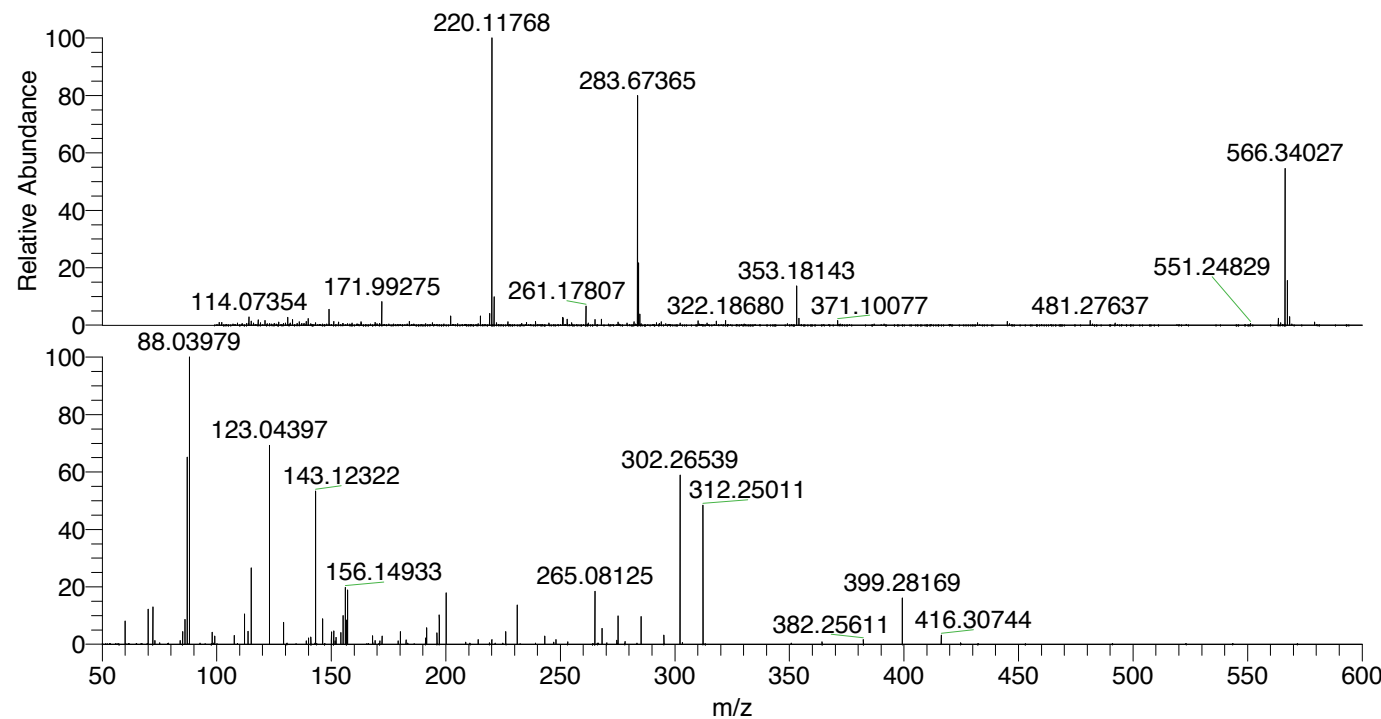
NL: 1.28E7  
 Base Peak m/z= 566.33580-566.34712 F:  
 FTMS + p ESI Full ms [100.0000-1500.0000]  
 MS Pbistriata

NL: 1.97E7  
 Base Peak m/z= 283.67180-283.67748 F:  
 FTMS + p ESI Full ms [100.0000-1500.0000]  
 MS Pbistriata

NL: 1.01E6  
 Base Peak m/z= 50.00000-1500.00000 F:  
 FTMS + p ESI d Full ms2  
 283.6736@hcd35.00 [50.0000-595.0000] MS  
 Pbistriata

Pbistriata#1929-1958 RT: 4.53-4.60  
 F: FTMS + p ESI d Full ms2 283.67 ...  
 m/z= 50.00000-1000.00000

m/z	Intensity	Relative
60.05635	51906.1	8.05
70.02939	36174.6	5.61
70.06577	77765.6	12.06
72.08135	84357.1	13.09
85.07649	28786.2	4.47
86.06049	57178.6	8.87
87.05574	433222.7	67.20
88.03978	644646.7	100.00
98.02408	27271.3	4.23
99.09207	17993.1	2.79
107.58706	20552.9	3.19
112.08710	68508.4	10.63
112.11208	28661.8	4.45
113.59947	29792.9	4.62
115.05028	176364.0	27.36
123.04397	454438.7	70.49
129.13837	50428.1	7.82
140.08185	14967.2	2.32
141.10213	17559.2	2.72
143.12323	351808.7	54.57
146.16503	58030.0	9.00
150.05488	27635.5	4.29
151.03879	31174.2	4.84
152.07061	16489.0	2.56
154.13369	26463.1	4.11
155.11772	65105.1	10.10
156.14933	129269.4	20.05
156.62873	54917.6	8.52
157.10808	126158.8	19.57
168.06537	18682.7	2.90
172.14429	17979.5	2.79
180.11320	28571.0	4.43
182.62594	10045.5	1.56
191.13922	14186.3	2.20
191.63131	39004.0	6.05
196.15570	26302.7	4.08
197.13949	66423.5	10.30
200.14473	118122.1	18.32
214.16551	11085.1	1.72
220.06057	10719.9	1.66
226.19116	29705.9	4.61
231.19268	88803.4	13.78
243.18111	17555.8	2.72
243.21799	14126.7	2.19
248.05594	10819.3	1.68
265.08127	119567.4	18.55
268.21287	34864.8	5.41
275.16045	65434.3	10.15
285.23880	64397.6	9.99
295.22427	22065.3	3.42
302.26545	384754.2	59.68
312.25005	319704.2	49.59
382.25616	10931.1	1.70
399.28177	105058.6	16.30
416.30746	21142.7	3.28



NL: 2.35E7  
 Pbistriata#1939 RT: 4.55  
 AV: 1 T: FTMS + p ESI Full  
 ms [100.0000-1500.0000]

NL: 5.75E5  
 Pbistriata#1923-1964 RT:  
 4.52-4.60 AV: 7 F: FTMS +  
 p ESI d Full ms2  
 283.6736@hcd35.00  
 [50.0000-595.0000]

Pbistriata#1929-1958 RT: 4.53-4.60 AV: 6

F: FTMS + p ESI d Full ms2 283.6700@hcd35.00 [50.0000-595.0000]

m/z= 50.00000-1000.00000

m/z	Intensity	Relative
60.05635	51906.1	8.05
70.02939	36174.6	5.61
70.06577	77765.6	12.06
72.08135	84357.1	13.09
73.04021	8492.4	1.32
84.08178	8315.3	1.29
85.07649	28786.2	4.47
86.06049	57178.6	8.87
87.05574	433222.7	67.20
88.03978	644646.7	100.00
98.02408	27271.3	4.23
99.09207	17993.1	2.79
107.58706	20552.9	3.19
112.08710	68508.4	10.63
112.11208	28661.8	4.45
113.59947	29792.9	4.62
115.05028	176364.0	27.36
115.08676	6599.6	1.02
123.04397	454438.7	70.49
129.13837	50428.1	7.82
139.12316	7600.0	1.18
140.08185	14967.2	2.32
141.10213	17559.2	2.72
143.12323	351808.7	54.57
146.16503	58030.0	9.00
150.05488	27635.5	4.29
151.03879	31174.2	4.84
151.63657	7214.4	1.12
152.07061	16489.0	2.56
154.13369	26463.1	4.11
155.11772	65105.1	10.10
156.14933	129269.4	20.05
156.62873	54917.6	8.52
157.10808	126158.8	19.57
168.06537	18682.7	2.90
168.11281	3415.4	0.53
169.09702	8785.7	1.36
171.16051	7600.0	1.18
172.14429	17979.5	2.79

Pbistriata#1929-1958 RT: 4.53-4.60 AV: 6

F: FTMS + p ESI d Full ms2 283.6700@hcd35.00 [50.0000-595.0000]

m/z= 50.00000-1000.00000

m/z	Intensity	Relative
179.14008	7562.2	1.17
180.11320	28571.0	4.43
182.62594	10045.5	1.56
191.13922	14186.3	2.20
191.63131	39004.0	6.05
196.15570	26302.7	4.08
197.13949	66423.5	10.30
200.14473	118122.1	18.32
208.65782	4708.9	0.73
214.16551	11085.1	1.72
219.07600	3706.5	0.57
220.06057	10719.9	1.66
226.15467	5641.5	0.88
226.19116	29705.9	4.61
231.19268	88803.4	13.78
243.18111	17555.8	2.72
243.21799	14126.7	2.19
247.07111	5176.5	0.80
248.05594	10819.3	1.68
253.20244	5380.6	0.83
265.08127	119567.4	18.55
268.17893	3928.2	0.61
268.21287	34864.8	5.41
270.22985	3471.3	0.54
274.66859	9188.1	1.43
275.16045	65434.3	10.15
278.19780	6554.6	1.02
285.23880	64397.6	9.99
295.22427	22065.3	3.42
302.26545	384754.2	59.68
303.26839	3845.7	0.60
312.25005	319704.2	49.59
364.24268	5832.0	0.90
382.25616	10931.1	1.70
399.28177	105058.6	16.30
416.30746	21142.7	3.28
424.76069	3314.8	0.51