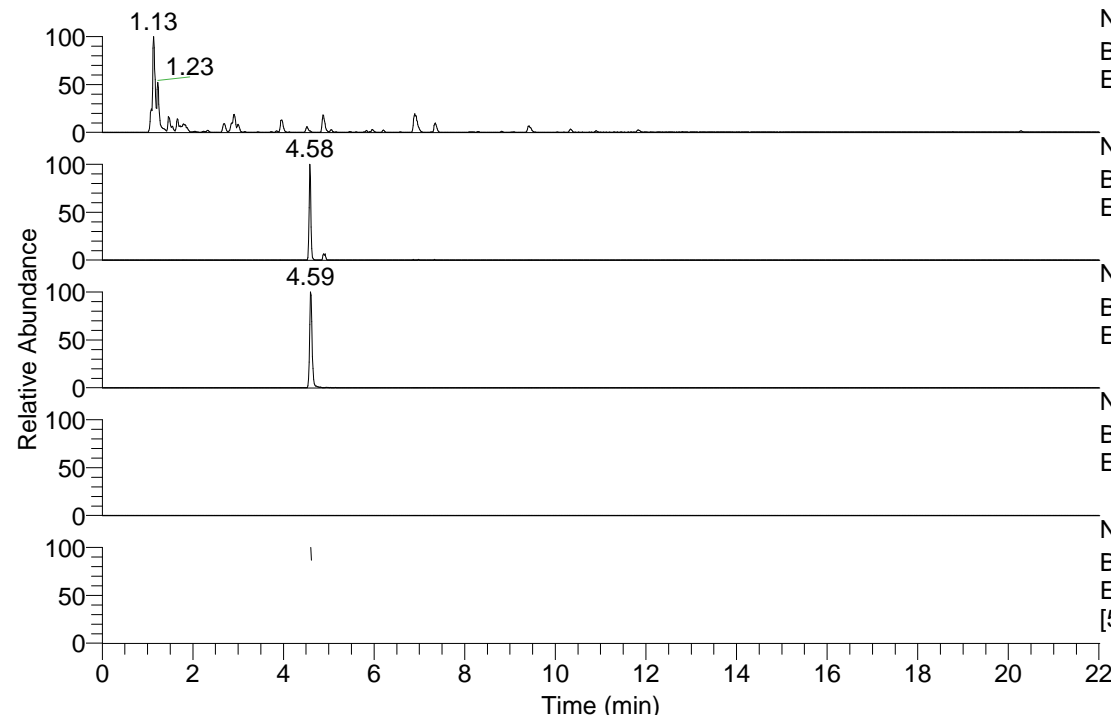


RT: 0.00 - 22.01



NL: 8.91E8
 Base Peak m/z= 100.00000-1500.00000 F: FTMS + p
 ESI Full ms [100.0000-1500.0000] MS Pbistriata

NL: 2.82E6
 Base Peak m/z= 563.39770-563.40896 F: FTMS + p
 ESI Full ms [100.0000-1500.0000] MS Pbistriata

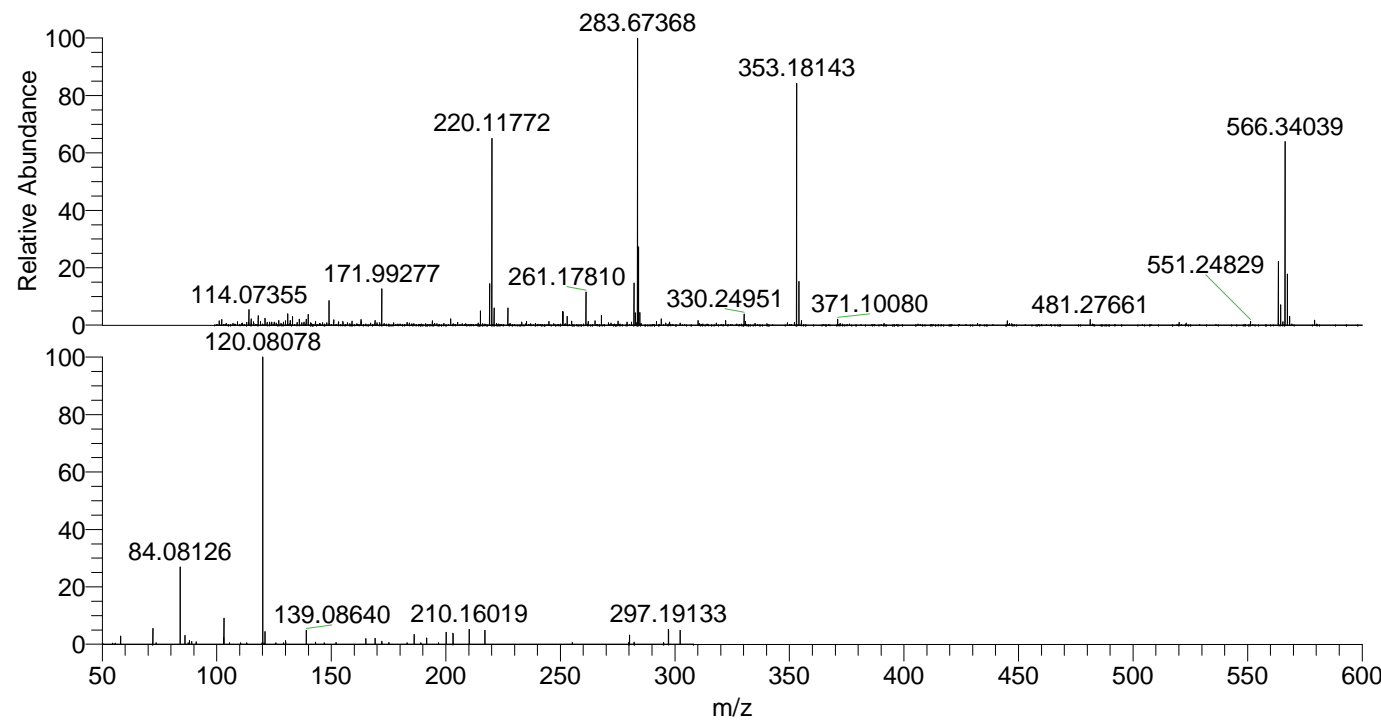
NL: 2.81E6
 Base Peak m/z= 282.20276-282.20840 F: FTMS + p
 ESI Full ms [100.0000-1500.0000] MS Pbistriata

NL: 0
 Base Peak m/z= 677.38942-677.40296 F: FTMS + p
 ESI Full ms [100.0000-1500.0000] MS Pbistriata

NL: 5.30E5
 Base Peak m/z= 50.00000-1500.00000 F: FTMS + p
 ESI d Full ms2 282.2047@hcd35.00
 [50.0000-305.0000] MS Pbistriata

Pbistriata#1962-1967 RT: 4.60-4.62
 F: FTMS + p ESI d Full ms2 282.20 ...
 m/z= 50.00000-1000.00000

m/z	Intensity	Relative
58.06588	12807.4	2.78
72.08144	25657.7	5.58
84.08126	121610.7	26.44
86.09699	13655.6	2.97
88.03988	5605.0	1.22
89.10780	4202.6	0.91
91.05479	3560.3	0.77
103.05437	10311.6	2.24
103.12305	41728.8	9.07
120.08078	460001.3	100.00
121.08406	19663.1	4.27
125.76522	2477.8	0.54
129.10250	2380.5	0.52
130.06515	5762.3	1.25
139.08640	21556.7	4.69
143.13616	3166.7	0.69
146.85150	2515.0	0.55
152.07083	2602.5	0.57
165.10206	8841.2	1.92
169.09730	9404.8	2.04
172.07528	4535.2	0.99
175.08665	2874.0	0.62
183.14879	2390.4	0.52
186.12352	15102.7	3.28
186.19689	2826.6	0.61
189.10227	2467.4	0.54
191.64444	10098.6	2.20
196.77045	2425.9	0.53
200.17585	18600.9	4.04
203.15044	16945.0	3.68
210.16019	23051.1	5.01
217.09694	21767.6	4.73
255.21755	2698.2	0.59
279.86326	2592.3	0.56
280.16503	14276.5	3.10
282.22465	3063.4	0.67
295.08238	2631.4	0.57
297.19133	23168.3	5.04
302.29075	21393.7	4.65



NL: 1.26E7
 Pbistriata#1951 RT: 4.58
 AV: 1 T: FTMS + p ESI Full
 ms [100.0000-1500.0000]

NL: 4.43E5
 Pbistriata#1886-2017 RT:
 4.60-4.62 AV: 2 F: FTMS +
 p ESI d Full ms2
 282.2047@hcd35.00
 [50.0000-305.0000]