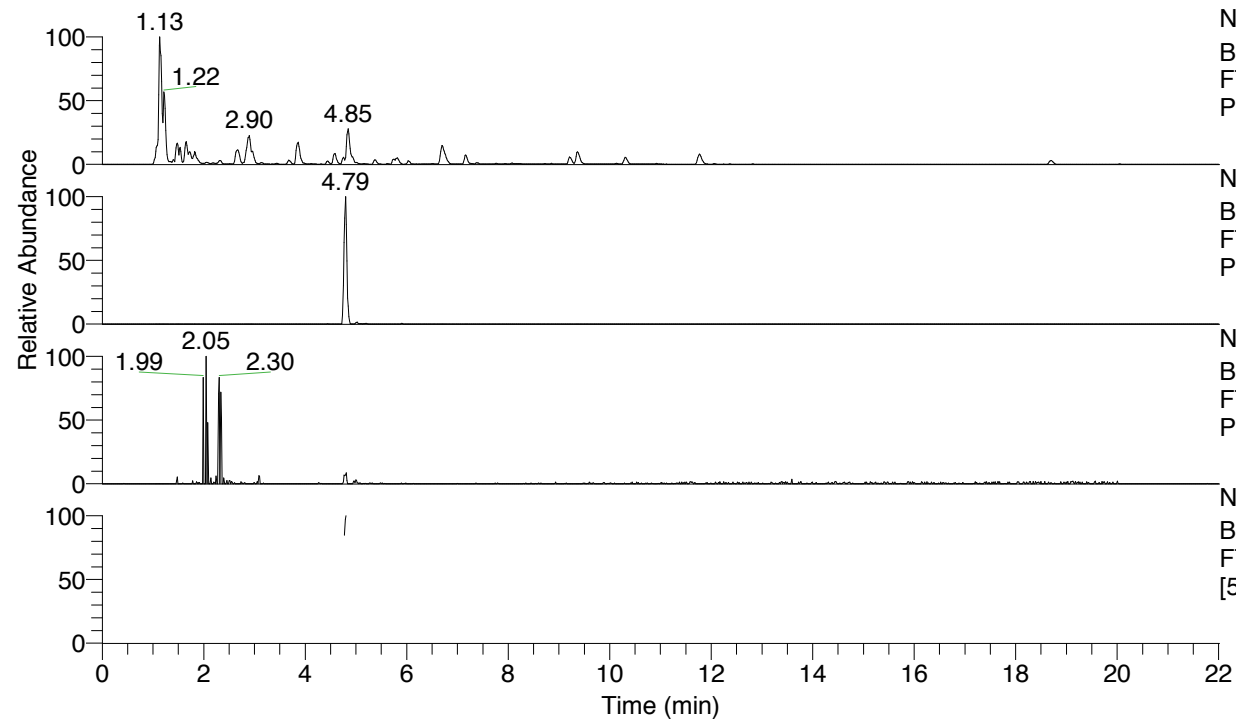


RT: 0.00 - 22.01



NL: 4.34E8
 Base Peak m/z= 100.00000-1500.00000 F:
 FTMS + p ESI Full ms [100.00-1500.00] MS
 Pbistriata20

NL: 3.14E6
 Base Peak m/z= 495.29063-495.29559 F:
 FTMS + p ESI Full ms [100.00-1500.00] MS
 Pbistriata20

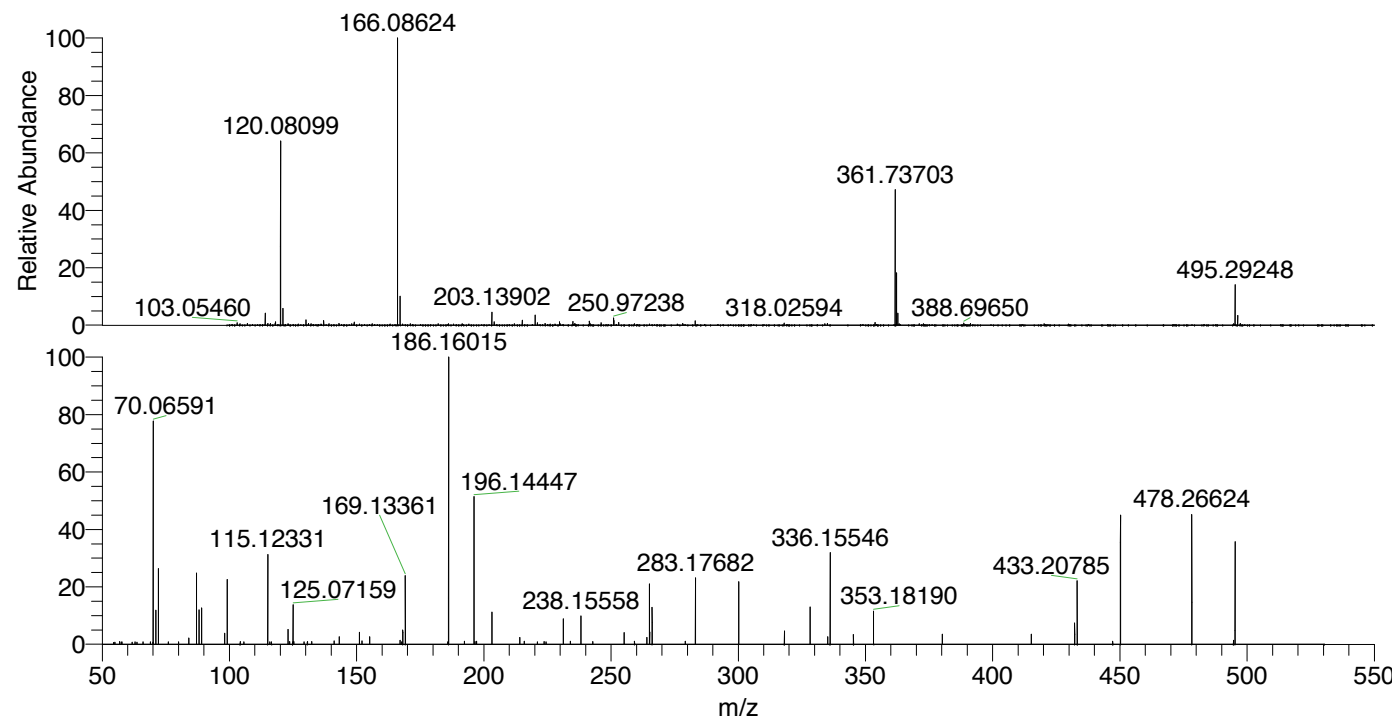
NL: 3.57E5
 Base Peak m/z= 248.14923-248.15171 F:
 FTMS + p ESI Full ms [100.00-1500.00] MS
 Pbistriata20

NL: 1.80E5
 Base Peak m/z= 50.00000-1500.00000 F:
 FTMS + p ESI d Full ms2 495.29@hcd35.00
 [50.00-525.00] MS Pbistriata20

Pbistriata20#1996-2010 RT: 4.77-4.80

F: FTMS + p ESI d Full ms2 495.29 ...

m/z	Intensity	Relative
70.06591	129216.3	78.67
71.05000	19362.7	11.79
72.08153	43263.5	26.34
84.08129	3628.4	2.21
87.05581	42037.9	25.59
88.04010	12273.9	7.47
88.07643	20410.7	12.43
89.10805	21080.6	12.83
98.09721	6437.3	3.92
99.09226	37493.4	22.83
115.05076	19979.8	12.16
115.08722	4928.8	3.00
115.12331	51302.5	31.24
123.04461	8556.0	5.21
125.07159	23442.8	14.27
141.10323	1881.8	1.15
143.11824	4229.9	2.58
151.08646	6862.8	4.18
152.10651	2014.2	1.23
155.11806	4359.7	2.65
167.08102	2232.6	1.36
168.11352	8080.1	4.92
168.14988	6921.7	4.21
169.09723	11502.6	7.00
169.13361	39118.9	23.82
186.12420	26614.0	16.20
186.16015	164244.5	100.00
196.14447	84802.6	51.63
197.13978	1823.2	1.11
203.14990	19051.0	11.60
214.16676	4004.2	2.44
231.21901	14470.9	8.81
238.15558	16218.4	9.87
255.18180	6707.5	4.08
259.22773	1790.1	1.09
264.09842	3926.8	2.39
265.08197	34695.3	21.12
265.16659	6989.3	4.26
266.15023	21625.9	13.17
283.17682	38701.2	23.56
300.20324	36116.0	21.99
318.14525	7604.4	4.63
328.23492	21228.9	12.93
335.17318	4425.7	2.69
336.15546	52301.2	31.84
345.26169	5916.9	3.60
353.18190	18963.5	11.55
380.19820	5854.0	3.56
415.19557	5775.3	3.52
432.22480	12135.0	7.39
433.20785	36321.9	22.11
450.23530	73681.0	44.86
478.26624	76306.9	46.46
494.66352	2242.0	1.37
495.29289	58582.7	35.67



NL: 2.19E7
 Pbistriata20#2005 RT:
 4.79 AV: 1 T: FTMS + p
 ESI Full lock ms
 [100.00-1500.00]

NL: 1.64E5
 Pbistriata20#1914-2137
 RT: 4.77-4.80 AV: 3 F:
 FTMS + p ESI d Full ms2
 495.29@hcd35.00
 [50.00-525.00]

Pbistriata#2069-2076 RT: 4.87-4.88 AV: 2

F: FTMS + p ESI d Full ms2 495.2900@hcd35.00 [50.0000-525.0000]

m/z= 50.00000-1000.00000

m/z	Intensity	Relative
51.37666	2767.8	0.81
52.48566	2893.0	0.85
58.06600	6630.9	1.94
66.29400	3132.1	0.92
70.06197	6802.7	1.99
70.06576	305786.5	89.63
70.06955	7110.7	2.08
70.21691	3581.7	1.05
71.04980	49301.6	14.45
71.44959	3405.8	1.00
72.08137	108185.2	31.71
83.37434	3258.1	0.95
84.08144	17651.2	5.17
87.05576	103497.2	30.34
87.57308	3333.6	0.98
88.03980	30627.8	8.98
88.07613	56612.8	16.59
89.10766	44682.5	13.10
94.70163	3479.9	1.02
97.45709	3089.1	0.91
98.09682	21245.0	6.23
99.09202	82988.7	24.32
100.07612	3708.0	1.09
115.05027	45567.9	13.36
115.08697	12355.7	3.62
115.12298	116063.8	34.02
123.04424	18592.8	5.45
125.07084	54275.0	15.91
126.09189	3620.9	1.06
126.55160	3583.0	1.05
141.10197	12207.1	3.58
142.06044	4472.2	1.31
142.68594	3318.0	0.97
143.11777	19096.6	5.60
151.08635	23314.3	6.83
152.07017	9074.1	2.66
152.10680	17295.1	5.07
166.67392	3570.3	1.05
167.08099	16340.1	4.79

Pbistriata#2069-2076 RT: 4.87-4.88 AV: 2

F: FTMS + p ESI d Full ms2 495.2900@hcd35.00 [50.0000-525.0000]

m/z= 50.00000-1000.00000

m/z	Intensity	Relative
168.11326	23499.6	6.89
168.14962	22892.0	6.71
169.09682	27979.7	8.20
169.13316	75729.4	22.20
179.08124	3716.0	1.09
186.12354	58645.4	17.19
186.15957	341172.6	100.00
186.17473	7259.9	2.13
196.10813	10908.8	3.20
196.14406	197879.9	58.00
203.15009	44782.9	13.13
213.13411	12550.8	3.68
214.11742	4540.6	1.33
214.19148	15393.8	4.51
221.09117	4179.5	1.23
231.21755	37156.1	10.89
238.15464	27405.1	8.03
241.20294	4727.0	1.39
255.18140	16332.2	4.79
264.09875	10185.3	2.99
265.08144	71021.6	20.82
265.16502	20204.2	5.92
266.14968	47051.6	13.79
283.17565	88574.2	25.96
290.90284	3743.9	1.10
300.20209	87031.2	25.51
318.14420	20183.2	5.92
319.12696	3981.8	1.17
328.23349	47931.1	14.05
329.43633	3773.2	1.11
335.17081	11900.9	3.49
336.15466	94600.4	27.73
345.26017	19891.4	5.83
346.13986	9679.5	2.84
353.18167	37035.4	10.86
389.22035	5677.0	1.66
415.19544	15796.2	4.63
423.77110	4152.4	1.22
432.22397	24539.5	7.19

Pbistriata#2069-2076 RT: 4.87-4.88 AV: 2

F: FTMS + p ESI d Full ms2 495.2900@hcd35.00 [50.0000-525.0000]

m/z= 50.00000-1000.00000

m/z	Intensity	Relative
433.20714	77368.4	22.68
450.23339	132326.8	38.79
478.26528	125659.2	36.83
495.22157	3885.5	1.14
495.29144	112770.9	33.05