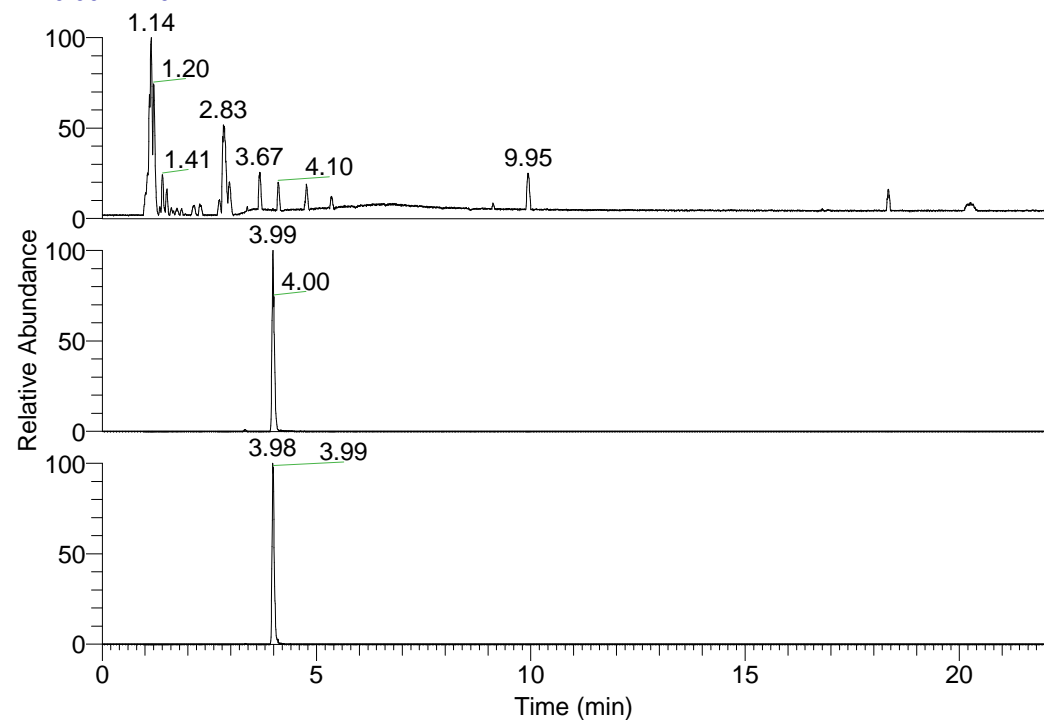


RT: 0.00 - 22.01



NL: 3.85E8
 Base Peak m/z=
 100.00000-1500.00000 F:
 FTMS + p ESI Full ms
 [100.00-1500.00] MS
 Pbistriata_HDX

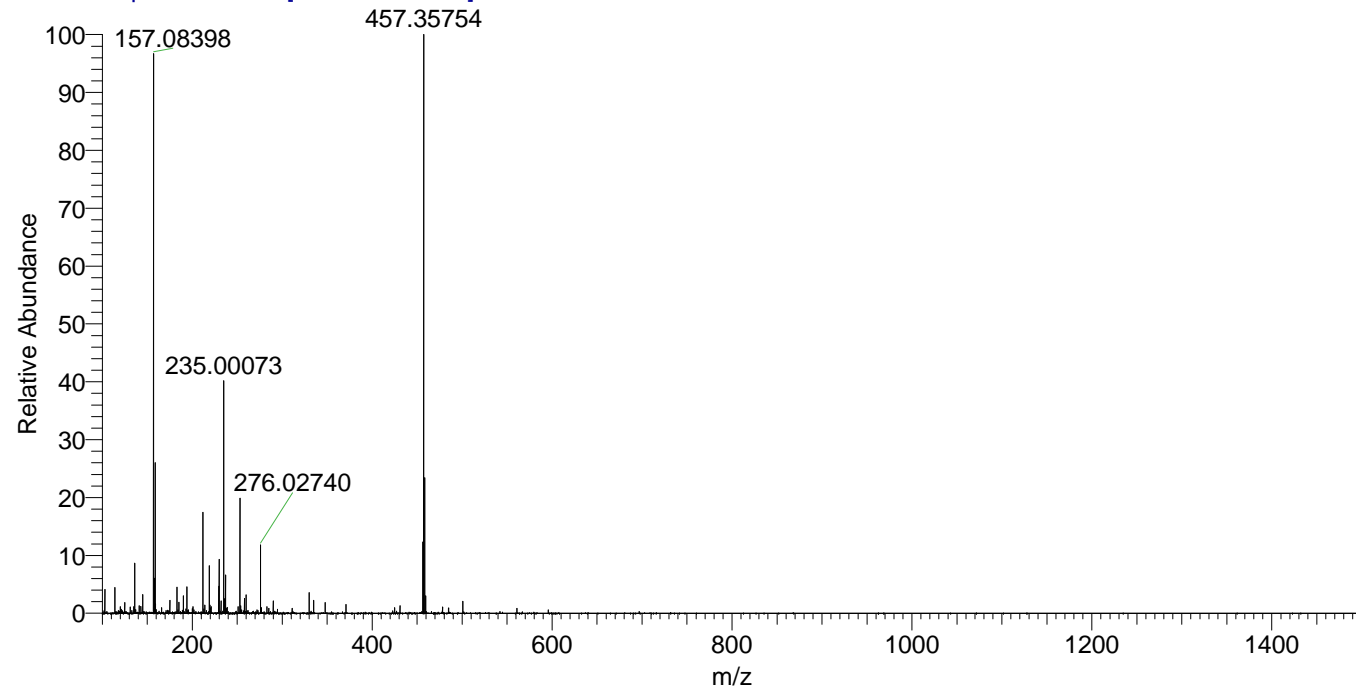
NL: 2.12E7
 Base Peak m/z=
 457.35472-457.35930 F: FTMS
 + p ESI Full ms
 [100.00-1500.00] MS
 Pbistriata_HDX

NL: 9.22E5
 Base Peak m/z=
 229.68441-229.68671 F: FTMS
 + p ESI Full ms
 [100.00-1500.00] MS
 Pbistriata_HDX

Pbistriata_HDX#648 RT: 3.99
 T: FTMS + p ESI Full ms [100.00-1500.00]
 m/z= 457.00000-458.00000

m/z	Intensity	Relative	Delta (ppm)	Composition
457.35754	19161252.0	100.00	-1.01	C ₂₂ H ₂₇ ² H ₁₀ O ₃ N ₇
			2.37	C ₂₂ H ₂₅ ² H ₁₁ O ₃ N ₇
			-4.40	C ₂₂ H ₂₉ ² H ₉ O ₃ N ₇
			5.76	C ₂₂ H ₂₃ ² H ₁₂ O ₃ N ₇
			-7.78	C ₂₂ H ₃₁ ² H ₈ O ₃ N ₇
			9.14	C ₂₂ H ₂₁ ² H ₁₃ O ₃ N ₇

Pbistriata_HDX #648 RT: 3.99 AV: 1 NL: 1.87E7
 T: FTMS + p ESI Full ms [100.00-1500.00]



Pbistriata_HDX #648 RT: 3.99 AV: 1 NL: 1.87E7
 T: FTMS + p ESI Full ms [100.00-1500.00]

