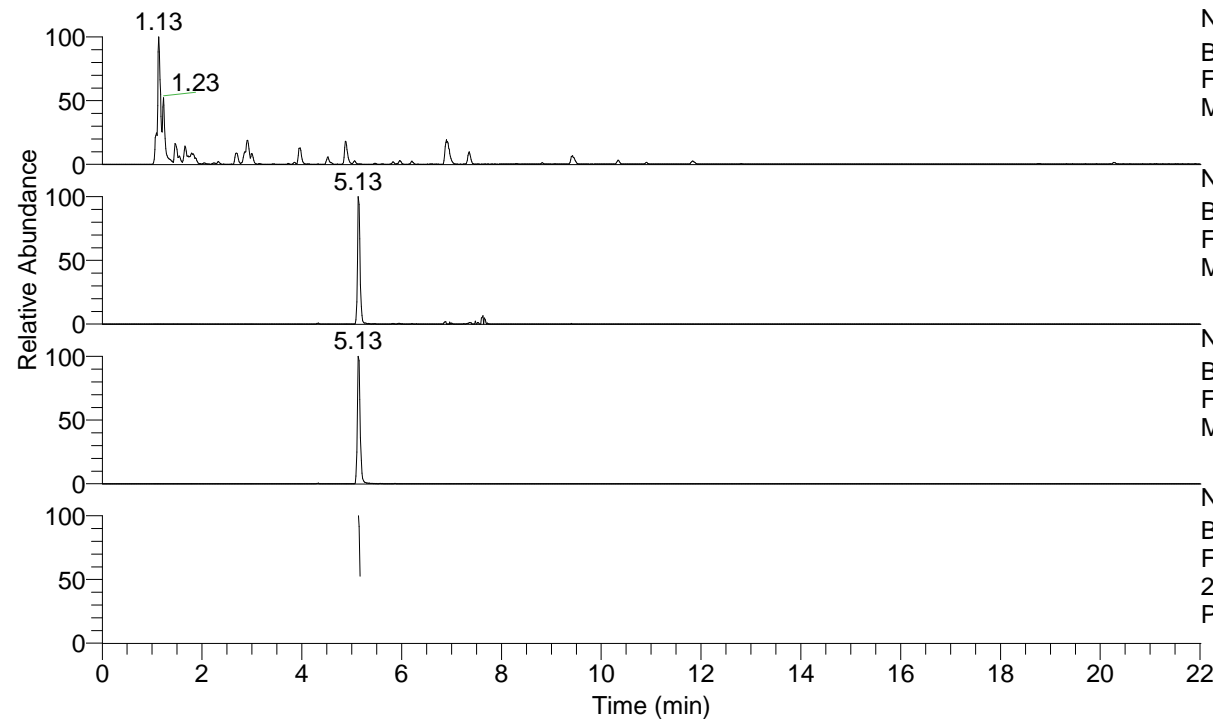


RT: 0.00 - 22.01



NL: 8.91E8
 Base Peak m/z= 100.00000-1500.00000 F:
 FTMS + p ESI Full ms [100.0000-1500.0000]
 MS Pbistriata

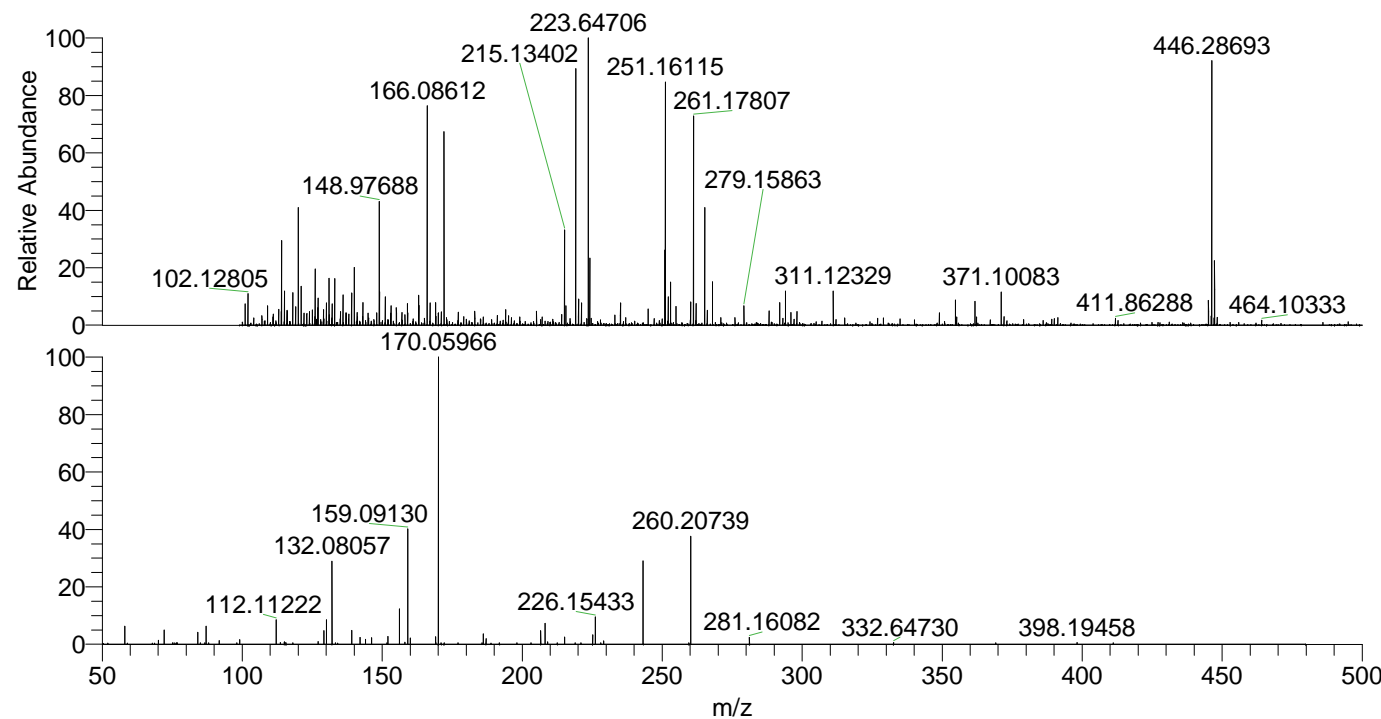
NL: 2.40E6
 Base Peak m/z= 446.28350-446.29242 F:
 FTMS + p ESI Full ms [100.0000-1500.0000]
 MS Pbistriata

NL: 2.51E6
 Base Peak m/z= 223.64565-223.65013 F:
 FTMS + p ESI Full ms [100.0000-1500.0000]
 MS Pbistriata

NL: 4.12E5
 Base Peak m/z= 50.00000-1500.00000 F:
 FTMS + p ESI d Full ms2
 223.6471@hcd35.00 [50.0000-475.0000] MS
 Pbistriata

Pbistriata#2188-2199 RT: 5.14-5.17
 F: FTMS + p ESI d Full ms2 223.65 ...
 m/z= 50.00000-1000.00000

m/z	Intensity	Relative
58.06588	19501.3	6.30
70.06575	4326.6	1.40
72.08132	15242.1	4.92
75.09227	1640.1	0.53
76.83194	1551.9	0.50
84.08129	12915.6	4.17
85.07672	1716.0	0.55
87.05577	19610.7	6.34
88.03989	1557.6	0.50
91.76040	3854.7	1.25
99.09195	5033.3	1.63
112.11222	26236.4	8.48
113.58148	1827.3	0.59
115.05466	2625.0	0.85
115.08671	2192.2	0.71
115.62104	1780.3	0.58
127.08673	2778.1	0.90
129.13870	14336.5	4.63
130.06476	25920.8	8.37
132.08057	89547.3	28.93
139.12293	14821.8	4.79
142.06499	7315.6	2.36
144.08065	5171.2	1.67
146.16527	6710.4	2.17
152.07048	8250.4	2.67
156.14920	36937.6	11.93
158.06024	2135.6	0.69
159.09130	121764.7	39.34
160.07527	6416.3	2.07
169.09744	7742.4	2.50
169.14669	1573.6	0.51
170.05966	309550.8	100.00
171.06406	1638.8	0.53
172.10830	1623.8	0.52
177.10177	1610.2	0.52
186.12362	11146.7	3.60
187.08668	5725.3	1.85
191.87326	1685.4	0.54
198.12425	1581.1	0.51
203.15049	1702.7	0.55
206.62098	14166.1	4.58
208.14477	22200.5	7.17
209.12789	2551.9	0.82
215.13396	7639.7	2.47
218.91467	1605.2	0.52
221.01992	1628.1	0.53
225.17127	10096.2	3.26
226.15433	28524.0	9.21
228.09784	1708.9	0.55
229.12982	3500.7	1.13
243.18112	87112.9	28.14
260.20739	112787.8	36.44
281.16082	7304.3	2.36
332.64730	1854.7	0.60
369.15013	1609.9	0.52
398.19458	1885.9	0.61



NL: 2.50E6
 Pbistriata#2185 RT: 5.13
 AV: 1 T: FTMS + p ESI Full
 ms [100.0000-1500.0000]

NL: 3.00E5
 Pbistriata#2101-2310 RT:
 5.14-5.17 AV: 3 F: FTMS +
 p ESI d Full ms2
 223.6471@hcd35.00
 [50.0000-475.0000]