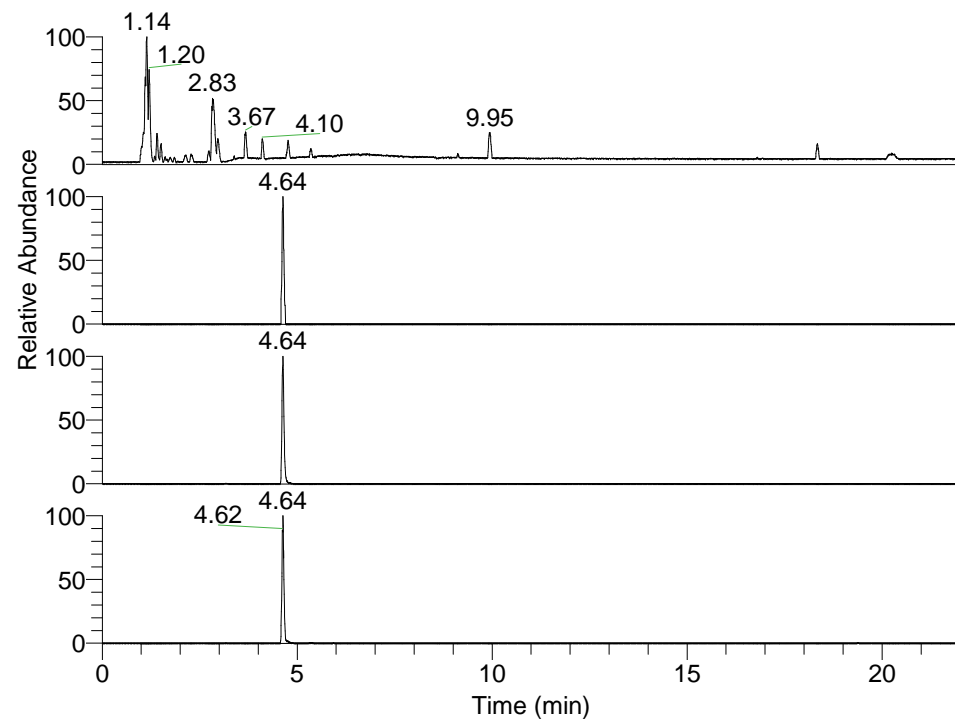


RT: 0.00 - 22.01



NL: 3.85E8  
 Base Peak m/z=  
 100.00000-1500.00000 F: FTMS + p  
 ESI Full ms [100.00-1500.00] MS  
 Pbistriata\_HDX

NL: 1.05E5  
 Base Peak m/z= 436.35678-436.36114  
 F: FTMS + p ESI Full ms  
 [100.00-1500.00] MS Pbistriata\_HDX

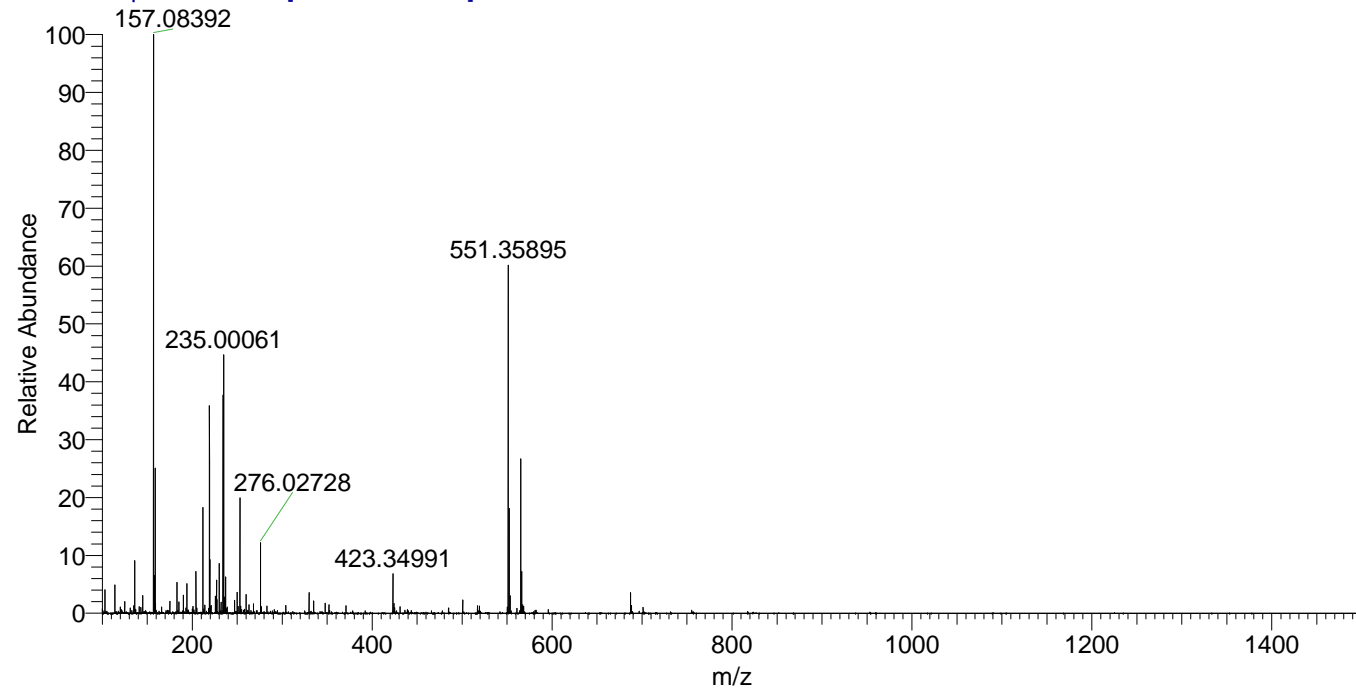
NL: 7.58E6  
 Base Peak m/z= 219.18543-219.18763  
 F: FTMS + p ESI Full ms  
 [100.00-1500.00] MS Pbistriata\_HDX

NL: 1.23E7  
 Base Peak m/z= 551.35534-551.36086  
 F: FTMS + p ESI Full ms  
 [100.00-1500.00] MS Pbistriata\_HDX

Pbistriata\_HDX#754 RT: 4.64  
 T: FTMS + p ESI Full ms [100.00-1500.00]  
 m/z= 551.00000-552.00000

m/z	Intensity	Relative	Delta (ppm)	Composition
551.35895	11304448.0	100.00	-0.27	C <sub>26</sub> H <sub>40</sub> <sup>2</sup> H <sub>4</sub> O <sub>4</sub> N <sub>5</sub> F <sub>3</sub>
			2.54	C <sub>26</sub> H <sub>38</sub> <sup>2</sup> H <sub>5</sub> O <sub>4</sub> N <sub>5</sub> F <sub>3</sub>
			-3.08	C <sub>26</sub> H <sub>42</sub> <sup>2</sup> H <sub>3</sub> O <sub>4</sub> N <sub>5</sub> F <sub>3</sub>
			5.34	C <sub>26</sub> H <sub>36</sub> <sup>2</sup> H <sub>6</sub> O <sub>4</sub> N <sub>5</sub> F <sub>3</sub>
			-5.89	C <sub>26</sub> H <sub>44</sub> <sup>2</sup> H <sub>2</sub> O <sub>4</sub> N <sub>5</sub> F <sub>3</sub>
			8.15	C <sub>26</sub> H <sub>34</sub> <sup>2</sup> H <sub>7</sub> O <sub>4</sub> N <sub>5</sub> F <sub>3</sub>
			-8.70	C <sub>26</sub> H <sub>46</sub> <sup>2</sup> H <sub>0</sub> O <sub>4</sub> N <sub>5</sub> F <sub>3</sub>

Pbistriata\_HDX #754 RT: 4.64 AV: 1 NL: 1.88E7  
 T: FTMS + p ESI Full ms [100.00-1500.00]



Pbistriata\_HDX #754 RT: 4.64 AV: 1 NL: 1.13E7  
 T: FTMS + p ESI Full ms [100.00-1500.00]

