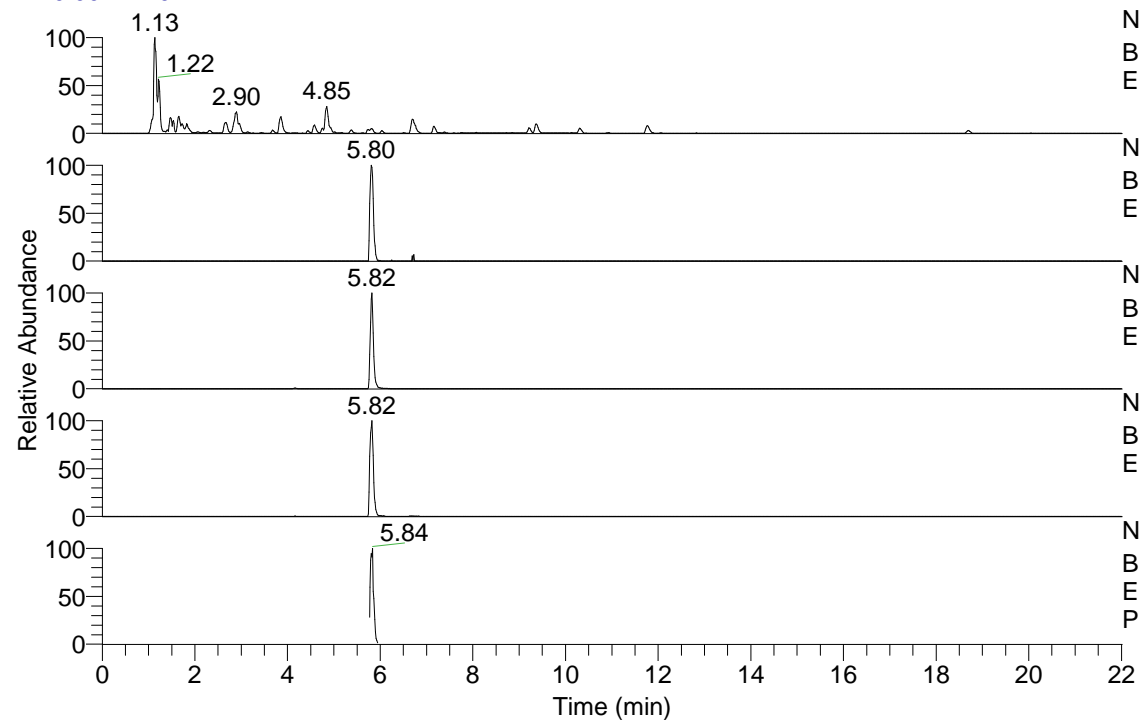


RT: 0.00 - 22.01



NL: 4.34E8

Base Peak m/z= 100.00000-1500.00000 F: FTMS + p
ESI Full ms [100.00-1500.00] MS Pbistriata20

NL: 1.98E5

Base Peak m/z= 432.33169-432.33601 F: FTMS + p
ESI Full ms [100.00-1500.00] MS Pbistriata20

NL: 8.18E6

Base Peak m/z= 216.66976-216.67192 F: FTMS + p
ESI Full ms [100.00-1500.00] MS Pbistriata20

NL: 2.27E7

Base Peak m/z= 546.32398-546.32944 F: FTMS + p
ESI Full ms [100.00-1500.00] MS Pbistriata20

NL: 6.26E6

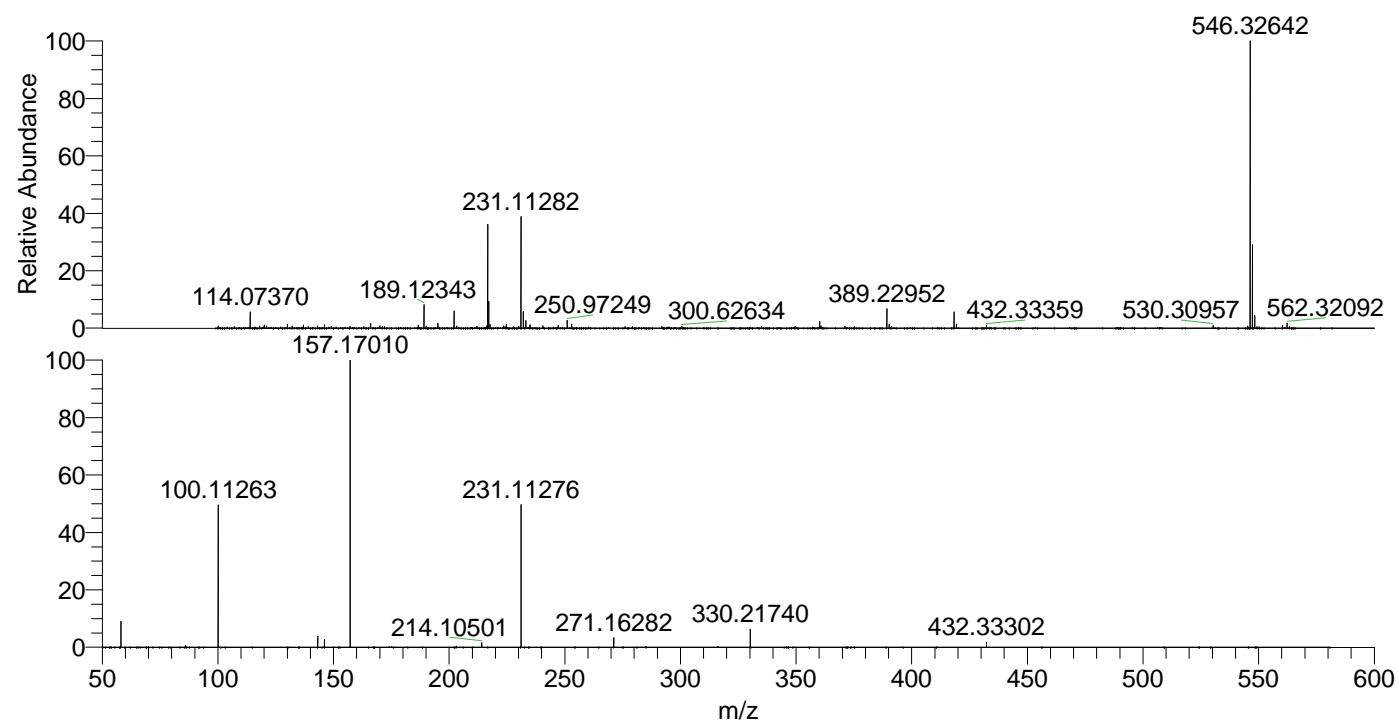
Base Peak m/z= 50.00000-1500.00000 F: FTMS + p
ESI d Full ms2 546.33@hcd35.00 [50.00-575.00] MS
Pbistriata20

Pbistriata20#2404-2450 RT: 5.77-5.88

F: FTMS + p ESI d Full ms2 546.33@h ...

m/z= 50.00000-1000.00000

m/z	Intensity	Relative
58.06600	332836.7	8.75
100.11263	1849158.9	48.64
143.15441	146325.6	3.85
146.06005	96369.3	2.53
157.17010	3801843.5	100.00
214.10501	61622.2	1.62
231.11276	1893557.6	49.81
271.16282	125249.7	3.29
330.21740	235333.4	6.19
432.33302	63676.1	1.67



NL: 2.11E7

Pbistriata20#2419 RT:
5.80 AV: 1 T: FTMS + p
ESI Full lock ms
[100.00-1500.00]

NL: 3.73E6

Pbistriata20#2404-2450
RT: 5.77-5.88 AV: 9 F:
FTMS + p ESI d Full ms2
546.33@hcd35.00
[50.00-575.00]