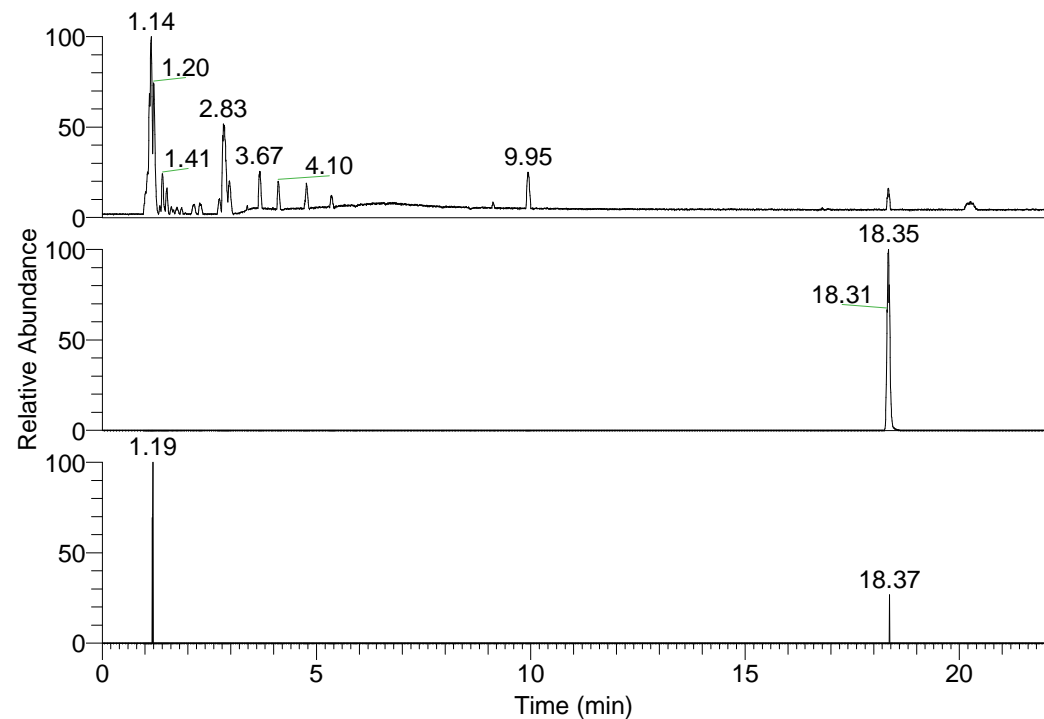


RT: 0.00 - 22.01



NL: 3.85E8  
 Base Peak m/z=  
 100.00000-1500.00000 F:  
 FTMS + p ESI Full ms  
 [100.00-1500.00] MS  
 Pbistriata\_HDX

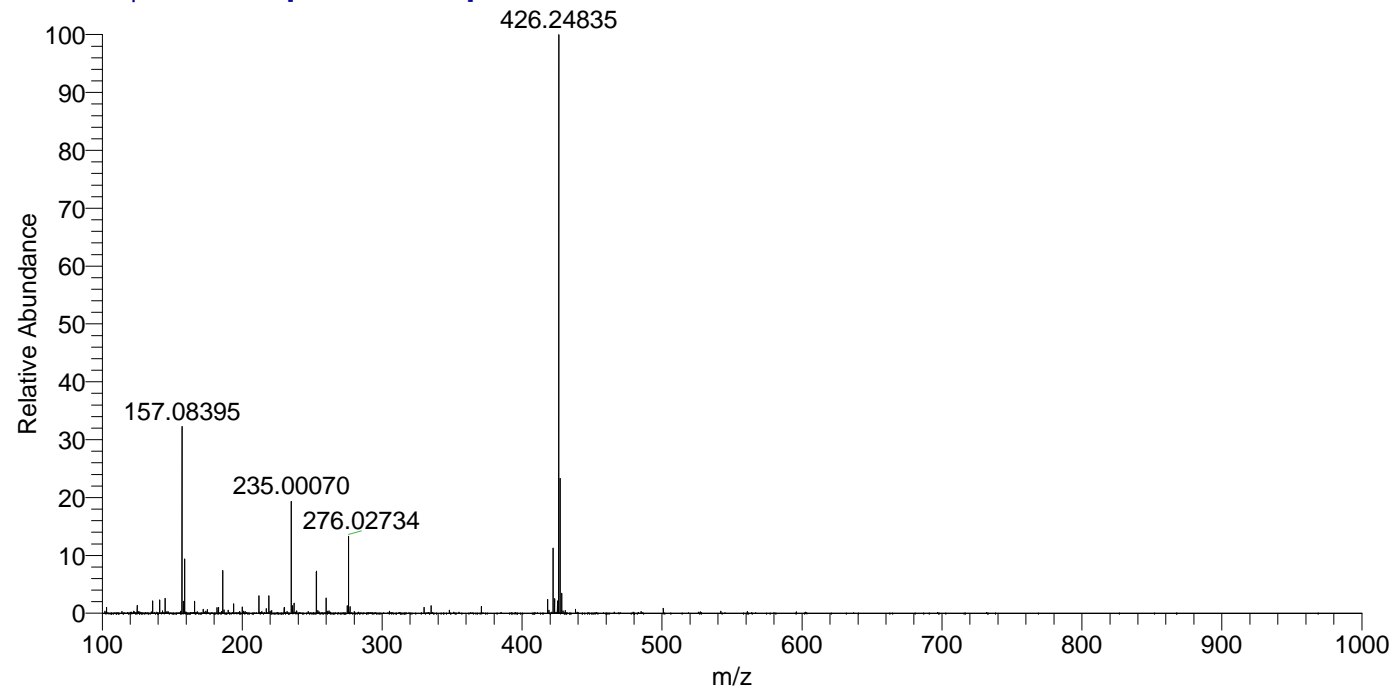
NL: 6.23E7  
 Base Peak m/z=  
 426.24590-426.25016 F: FTMS  
 + p ESI Full ms  
 [100.00-1500.00] MS  
 Pbistriata\_HDX

NL: 3.21E4  
 Base Peak m/z=  
 214.12999-214.13213 F: FTMS  
 + p ESI Full ms  
 [100.00-1500.00] MS  
 Pbistriata\_HDX

Pbistriata\_HDX#2984 RT: 18.35  
 T: FTMS + p ESI Full ms [100.00-1500.00]  
 m/z= 426.00000-427.00000

m/z	Intensity	Relative	Delta (ppm)	Composition
426.24835	56718304.0	100.00	-1.58	C <sub>21</sub> H <sub>22</sub> <sup>2</sup> H <sub>7</sub> O <sub>6</sub> N <sub>3</sub>
			2.06	C <sub>21</sub> H <sub>20</sub> <sup>2</sup> H <sub>8</sub> O <sub>6</sub> N <sub>3</sub>

Pbistriata\_HDX #2984 RT: 18.35 AV: 1 NL: 5.36E7  
 T: FTMS + p ESI Full ms [100.00-1500.00]



Pbistriata\_HDX #2984 RT: 18.35 AV: 1 NL: 5.36E7  
 T: FTMS + p ESI Full ms [100.00-1500.00]

