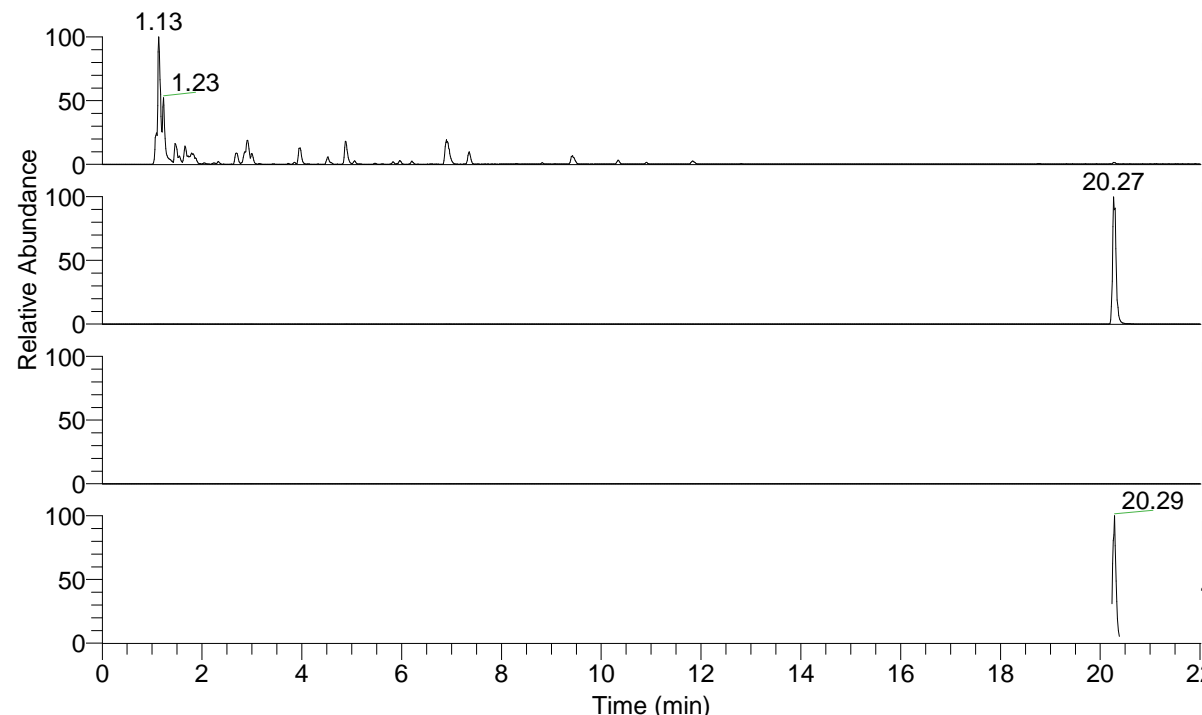


RT: 0.00 - 22.01



NL: 8.91E8  
 Base Peak m/z= 100.00000-1500.00000 F:  
 FTMS + p ESI Full ms [100.0000-1500.0000]  
 MS Pbistriata

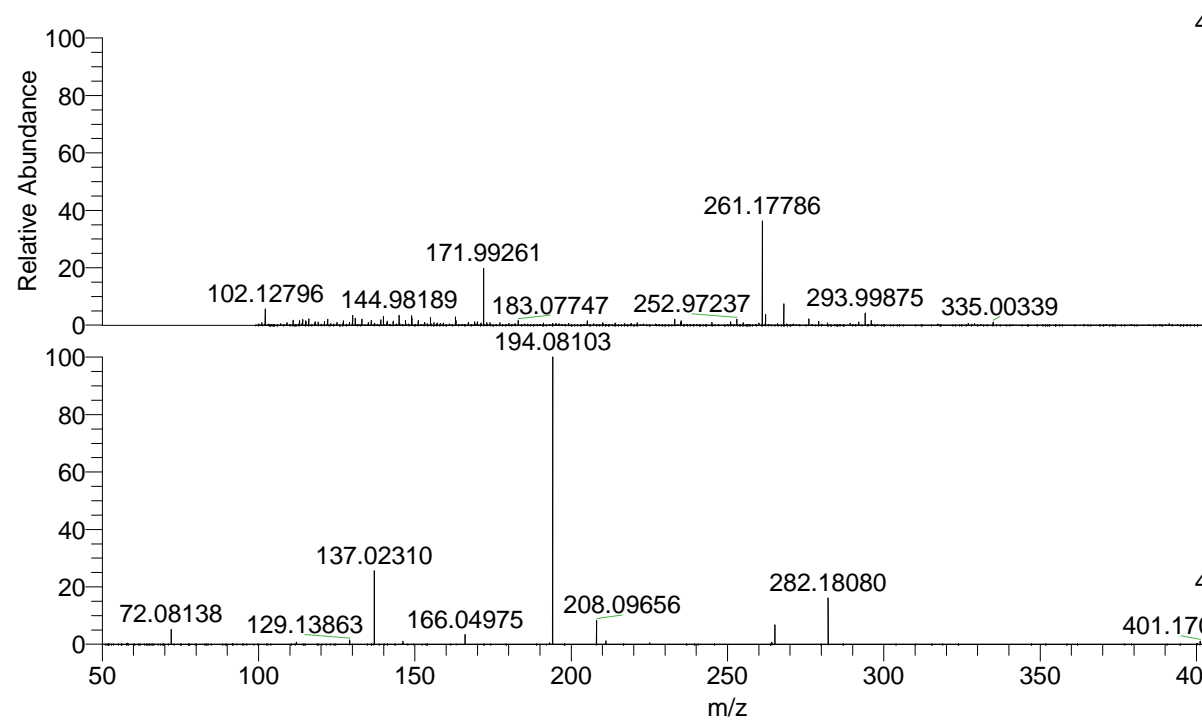
NL: 1.44E7  
 Base Peak m/z= 418.19363-418.20199 F:  
 FTMS + p ESI Full ms [100.0000-1500.0000]  
 MS Pbistriata

NL: 0  
 Base Peak m/z= 209.60072-209.60492 F:  
 FTMS + p ESI Full ms [100.0000-1500.0000]  
 MS Pbistriata

NL: 4.44E6  
 Base Peak m/z= 50.00000-1500.00000 F:  
 FTMS + p ESI d Full ms2  
 418.1963@hcd35.00 [50.0000-445.0000] MS  
 Pbistriata

Pbistriata#8291-8351 RT: 20.23-20.38  
 F: FTMS + p ESI d Full ms2 418.2000 ...  
 m/z= 50.00000-1000.00000

m/z	Intensity	Relative
72.08138	109268.2	5.20
112.11202	14589.9	0.69
129.13863	31841.3	1.52
137.02310	549703.9	26.17
146.16474	23608.5	1.12
166.04975	71763.0	3.42
193.09717	10976.7	0.52
194.08103	2100431.5	100.00
208.09656	173736.5	8.27
211.10740	25375.1	1.21
225.12288	11500.7	0.55
264.16998	15302.2	0.73
265.15424	140766.3	6.70
282.18080	335746.5	15.98
401.17057	21299.8	1.01
418.19662	340657.2	16.22



NL: 1.43E7  
 Pbistriata#8305 RT: 20.27  
 AV: 1 T: FTMS + p ESI Full  
 ms [100.0000-1500.0000]

NL: 2.08E6  
 Pbistriata#8230-8395 RT:  
 20.23-20.38 AV: 11 F: FTMS  
 + p ESI d Full ms2  
 418.1963@hcd35.00  
 [50.0000-445.0000]