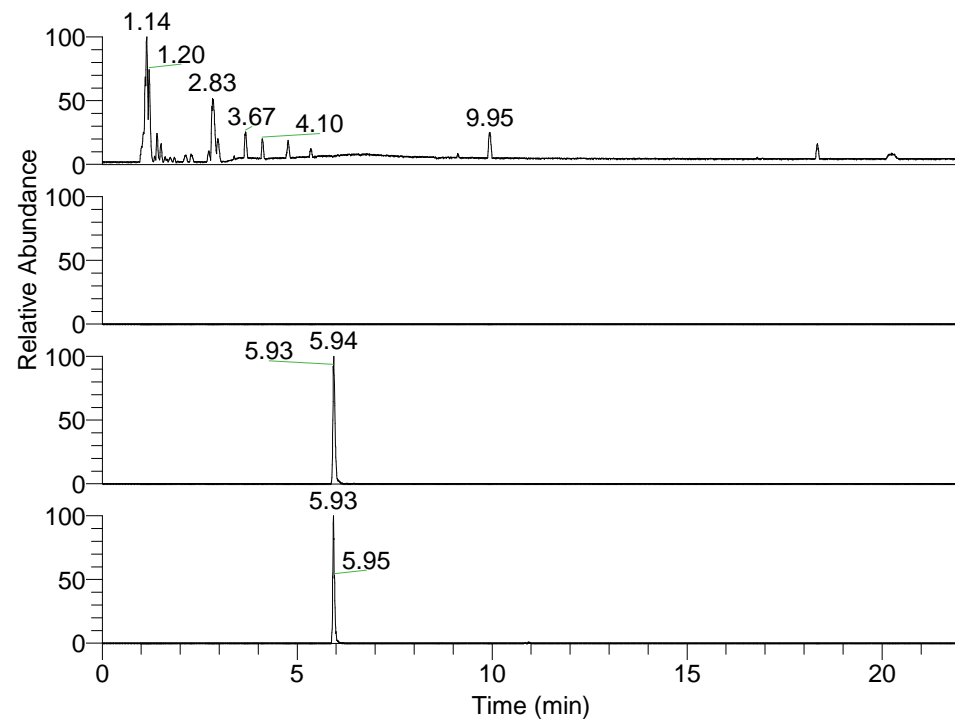


RT: 0.00 - 22.01



NL: 3.85E8
 Base Peak m/z=
 100.00000-1500.00000 F: FTMS + p
 ESI Full ms [100.00-1500.00] MS
 Pbistriata_HDX

NL: 0
 Base Peak m/z= 419.35567-419.35987
 F: FTMS + p ESI Full ms
 [100.00-1500.00] MS Pbistriata_HDX

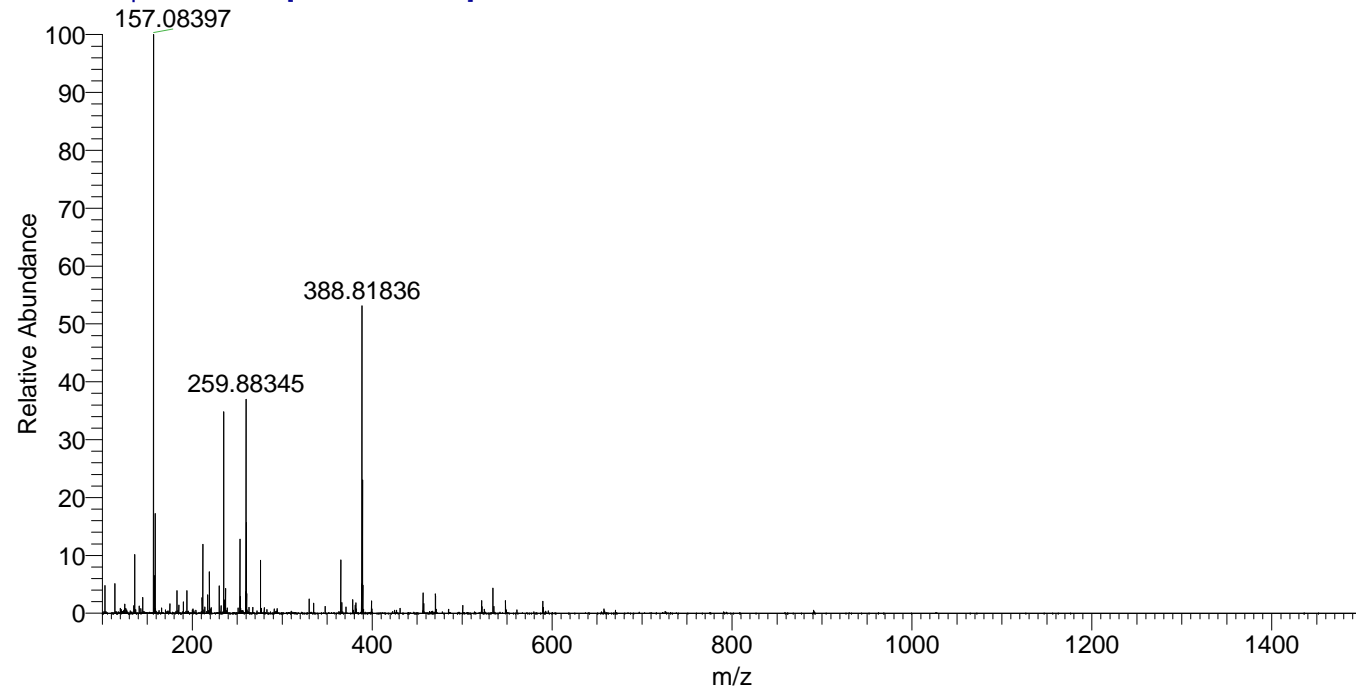
NL: 6.90E5
 Base Peak m/z= 210.68488-210.68698
 F: FTMS + p ESI Full ms
 [100.00-1500.00] MS Pbistriata_HDX

NL: 1.36E6
 Base Peak m/z= 534.35424-534.35958
 F: FTMS + p ESI Full ms
 [100.00-1500.00] MS Pbistriata_HDX

Pbistriata_HDX#970 RT: 5.94
 T: FTMS + p ESI Full ms [100.00-1500.00]
 m/z= 534.00000-535.00000

m/z	Intensity	Relative	Delta (ppm)	Composition
534.35779	1108924.5	100.00	-0.22	C ₂₆ H ₄₁ ² H ₃ O ₃ N ₅ F ₃
			2.68	C ₂₆ H ₃₉ ² H ₄ O ₃ N ₅ F ₃
			-3.12	C ₂₆ H ₄₃ ² H ₂ O ₃ N ₅ F ₃
			5.57	C ₂₆ H ₃₇ ² H ₅ O ₃ N ₅ F ₃
			-6.02	C ₂₆ H ₄₅ ² H ₁ O ₃ N ₅ F ₃
			8.47	C ₂₆ H ₃₅ ² H ₆ O ₃ N ₅ F ₃
			-8.91	C ₂₆ H ₄₇ O ₃ N ₅ F ₃

Pbistriata_HDX #970 RT: 5.94 AV: 1 NL: 2.42E7
 T: FTMS + p ESI Full ms [100.00-1500.00]



Pbistriata_HDX #970 RT: 5.94 AV: 1 NL: 1.05E6
 T: FTMS + p ESI Full ms [100.00-1500.00]

