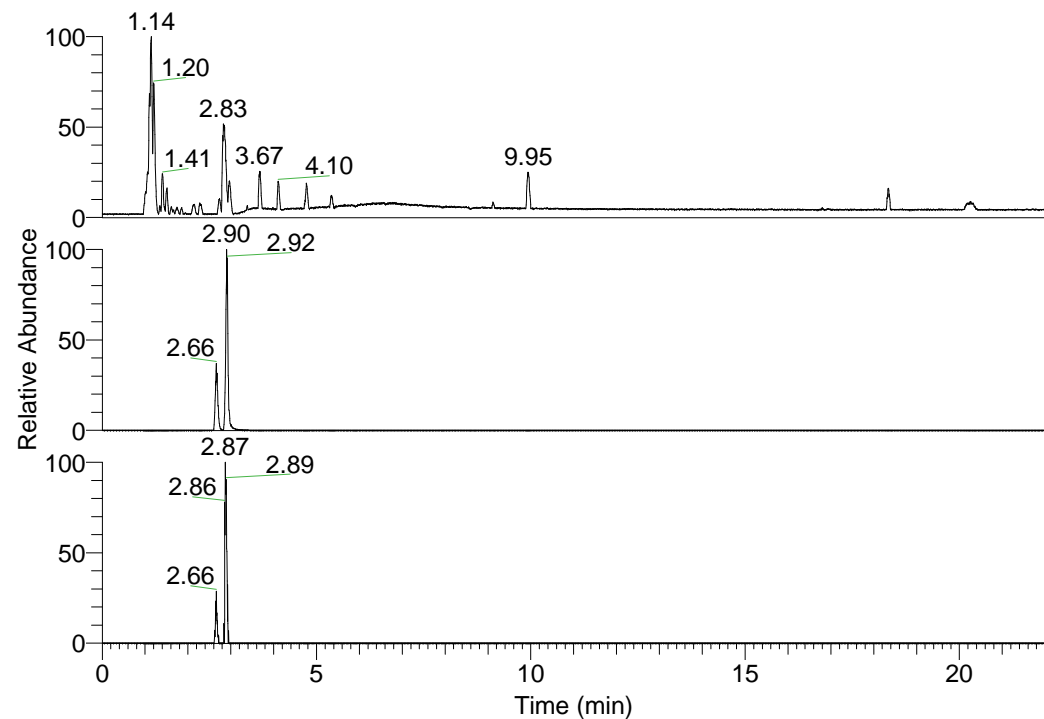


RT: 0.00 - 22.01



NL: 3.85E8
 Base Peak m/z=
 100.00000-1500.00000 F:
 FTMS + p ESI Full ms
 [100.00-1500.00] MS
 Pbistriata_HDX

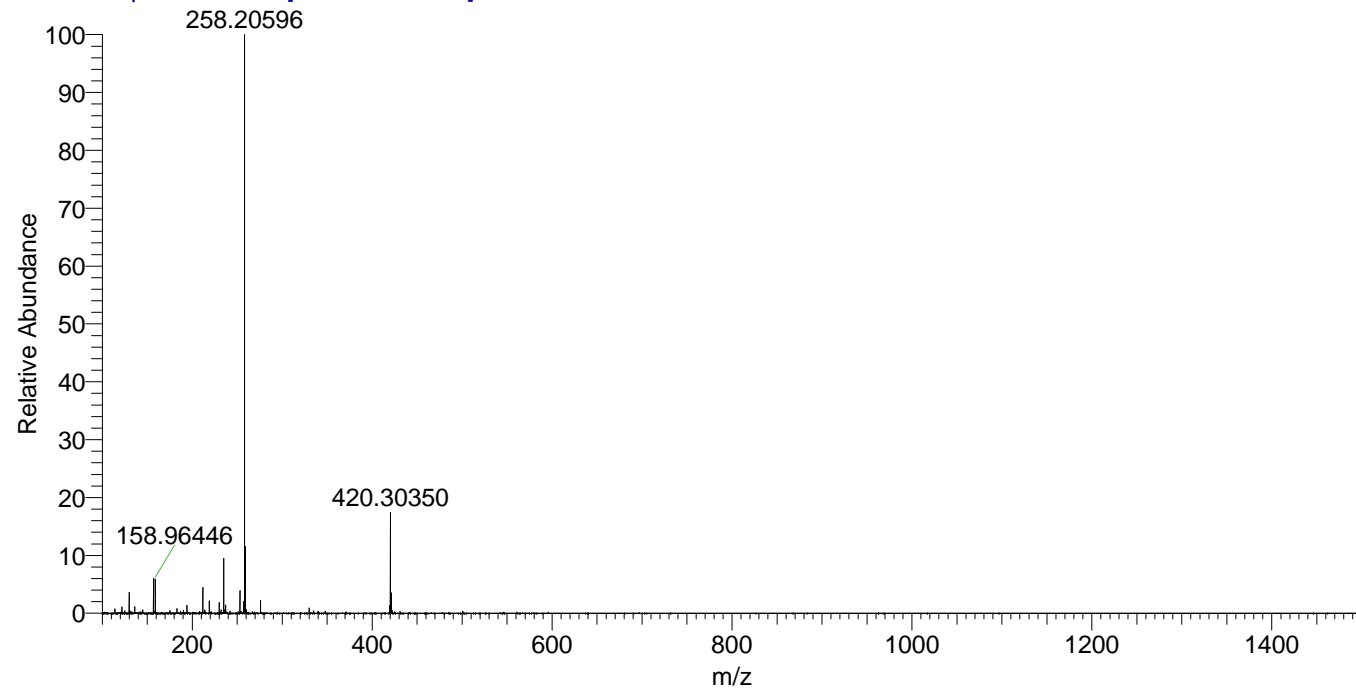
NL: 1.78E7
 Base Peak m/z=
 420.30101-420.30521 F: FTMS
 + p ESI Full ms
 [100.00-1500.00] MS
 Pbistriata_HDX

Pbistriata_HDX#469 RT: 2.90
 T: FTMS + p ESI Full ms [100.00-1500.00]

m/z = 420.00000-421.00000

m/z	Intensity	Relative	Delta (ppm)	Composition
420.30350	15130749.0	100.00	-1.46	C ₁₉ H ₂₄ ² H ₉ O ₅ N ₅
			2.22	C ₁₉ H ₂₂ ² H ₁₀ O ₅ N ₅
			-5.14	C ₁₉ H ₂₆ ² H ₈ O ₅ N ₅
			5.91	C ₁₉ H ₂₀ ² H ₁₁ O ₅ N ₅
			-8.83	C ₁₉ H ₂₈ ² H ₇ O ₅ N ₅
			9.59	C ₁₉ H ₁₈ ² H ₁₂ O ₅ N ₅

Pbistriata_HDX #469 RT: 2.90 AV: 1 NL: 8.67E7
 T: FTMS + p ESI Full ms [100.00-1500.00]



Pbistriata_HDX #469 RT: 2.90 AV: 1 NL: 1.51E7
 T: FTMS + p ESI Full ms [100.00-1500.00]

