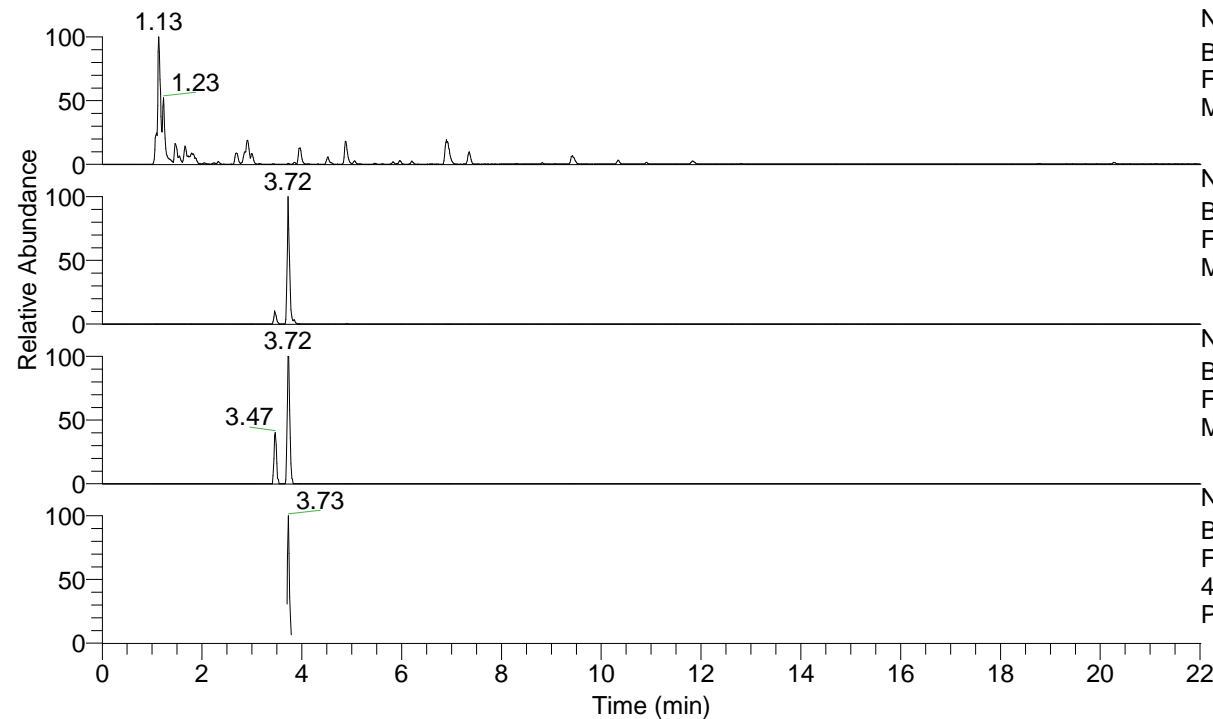


RT: 0.00 - 22.01



NL: 8.91E8
 Base Peak m/z= 100.00000-1500.00000 F:
 FTMS + p ESI Full ms [100.0000-1500.0000]
 MS Pbistriata

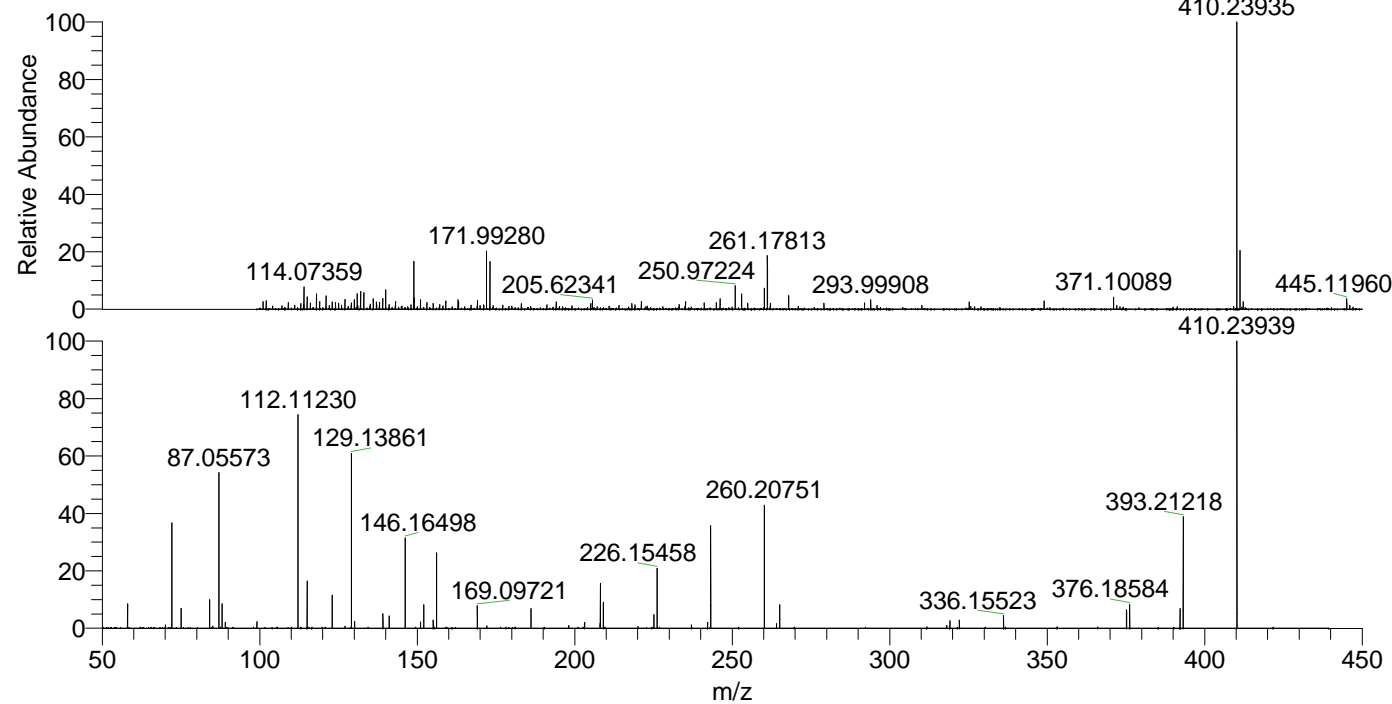
NL: 7.12E6
 Base Peak m/z= 410.23624-410.24444 F:
 FTMS + p ESI Full ms [100.0000-1500.0000]
 MS Pbistriata

NL: 2.41E5
 Base Peak m/z= 205.62202-205.62614 F:
 FTMS + p ESI Full ms [100.0000-1500.0000]
 MS Pbistriata

NL: 5.74E5
 Base Peak m/z= 50.00000-1500.00000 F:
 FTMS + p ESI d Full ms2
 410.2393@hcd35.00 [50.0000-435.0000] MS
 Pbistriata

Pbistriata#1588-1622 RT: 3.70-3.79
 F: FTMS + p ESI d Full ms2 410.24 ...
 m/z= 50.00000-1000.00000

m/z	Intensity	Relative
58.06580	22103.4	8.78
70.02923	2066.4	0.82
70.06574	2814.1	1.12
72.07787	1774.8	0.70
72.08137	96326.1	38.26
75.09229	17621.8	7.00
84.08125	25789.5	10.24
85.07641	1813.8	0.72
87.05573	142232.7	56.49
87.06111	2092.8	0.83
88.03976	21641.3	8.59
89.10773	5347.7	2.12
99.09196	5937.1	2.36
112.11230	190185.8	75.53
115.05039	42520.7	16.89
123.04394	29826.2	11.85
127.08637	1949.7	0.77
129.12962	1473.9	0.59
129.13861	156636.0	62.21
130.12281	6063.3	2.41
139.12305	12871.8	5.11
141.10226	10896.9	4.33
146.16498	80131.1	31.82
151.03856	1373.1	0.55
151.08637	5766.4	2.29
152.07043	21070.8	8.37
155.08134	7237.5	2.87
156.14933	66013.8	26.22
169.09721	19719.9	7.83
172.10881	2148.2	0.85
186.12387	17490.9	6.95
198.12437	2519.5	1.00
203.14986	5151.4	2.05
208.09704	4168.5	1.66
208.14426	40228.0	15.98
209.12819	23087.1	9.17
220.06136	1539.3	0.61
225.17067	12120.6	4.81
226.15458	52970.5	21.04
237.08672	3133.8	1.24
242.19746	5183.4	2.06
243.15720	2158.7	0.86
243.18116	90164.5	35.81
260.20751	108496.1	43.09
264.09757	3991.9	1.59
265.08168	21054.4	8.36
318.14499	2509.1	1.00
319.12808	6638.0	2.64
322.13915	7497.2	2.98
336.15523	11563.5	4.59
375.20156	16320.6	6.48
376.18584	21164.4	8.41
392.22858	17414.3	6.92
393.21218	98110.2	38.96
410.23939	251797.2	100.00



NL: 7.12E6
 Pbistriata#1597 RT: 3.72
 AV: 1 T: FTMS + p ESI Full
 ms [100.0000-1500.0000]

NL: 2.52E5
 Pbistriata#1550-1653 RT:
 3.70-3.79 AV: 7 F: FTMS +
 p ESI d Full ms2
 410.2393@hcd35.00
 [50.0000-435.0000]