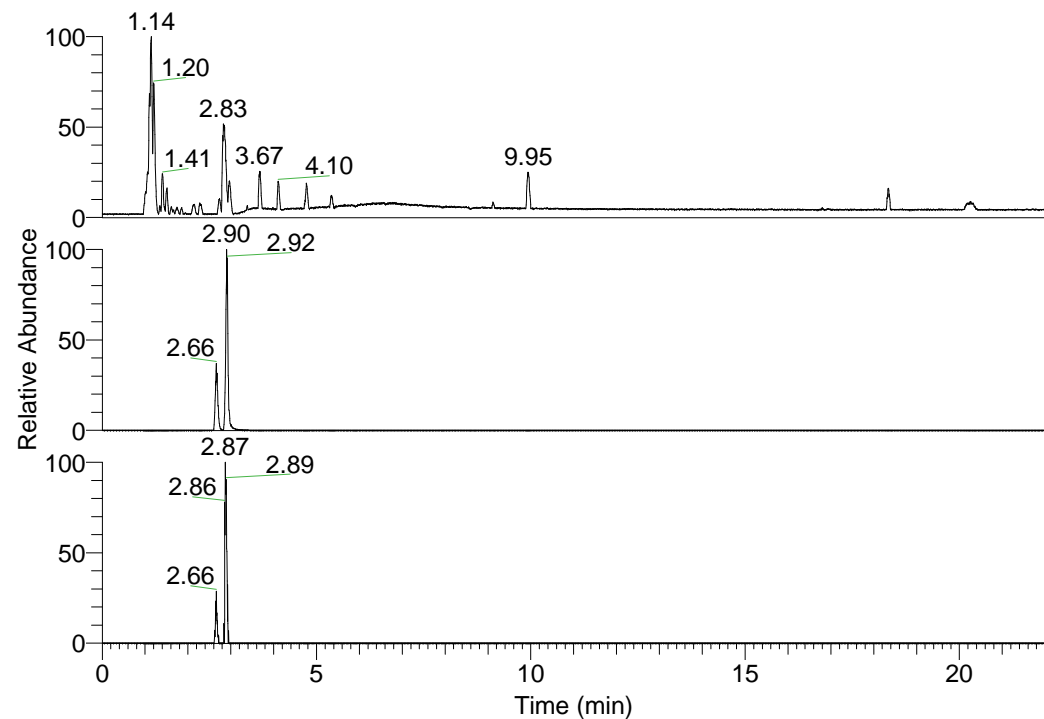


RT: 0.00 - 22.01



NL: 3.85E8
 Base Peak m/z=
 100.00000-1500.00000 F:
 FTMS + p ESI Full ms
 [100.00-1500.00] MS
 Pbistriata_HDX

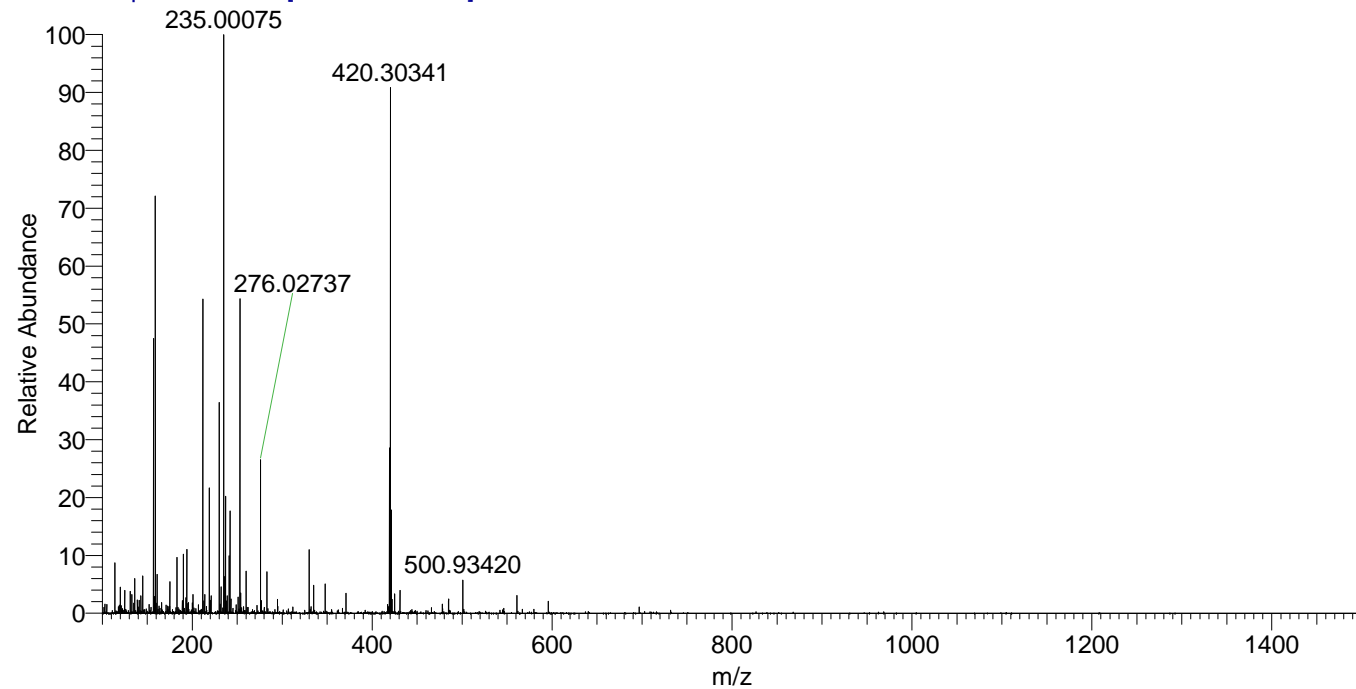
NL: 1.78E7
 Base Peak m/z=
 420.30101-420.30521 F: FTMS
 + p ESI Full ms
 [100.00-1500.00] MS
 Pbistriata_HDX

NL: 1.26E5
 Base Peak m/z=
 211.15755-211.15967 F: FTMS
 + p ESI Full ms
 [100.00-1500.00] MS
 Pbistriata_HDX

Pbistriata_HDX#428 RT: 2.66
 T: FTMS + p ESI Full ms [100.00-1500.00]
 m/z = 420.00000-421.00000

| m/z | Intensity | Relative | Delta (ppm) | Composition |
|-----------|-----------|----------|-------------|--|
| 420.30341 | 6587037.0 | 100.00 | -1.68 | C ₁₉ H ₂₄ ² H ₉ O ₅ N ₅ |
| | | | 2.00 | C ₁₉ H ₂₂ ² H ₁₀ O ₅ N ₅ |
| | | | -5.36 | C ₁₉ H ₂₆ ² H ₈ O ₅ N ₅ |
| | | | 5.69 | C ₁₉ H ₂₀ ² H ₁₁ O ₅ N ₅ |
| | | | -9.05 | C ₁₉ H ₂₈ ² H ₇ O ₅ N ₅ |
| | | | 9.37 | C ₁₉ H ₁₈ ² H ₁₂ O ₅ N ₅ |

Pbistriata_HDX #428 RT: 2.66 AV: 1 NL: 7.20E6
 T: FTMS + p ESI Full ms [100.00-1500.00]



Pbistriata_HDX #428 RT: 2.66 AV: 1 NL: 6.54E6
 T: FTMS + p ESI Full ms [100.00-1500.00]

