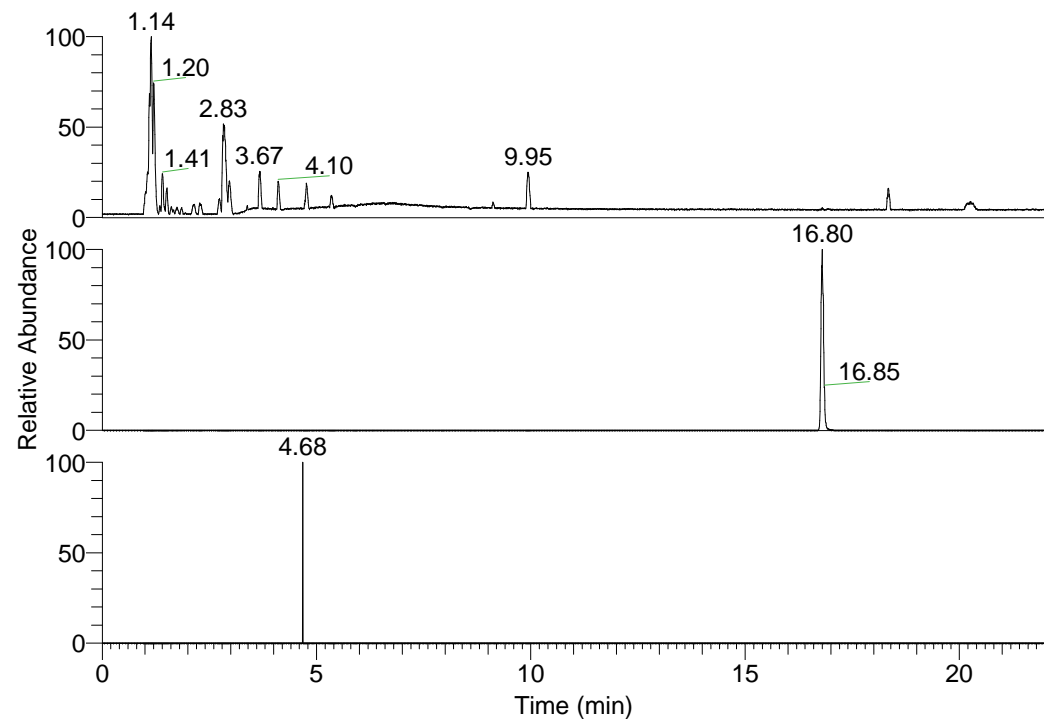


RT: 0.00 - 22.01



NL: 3.85E8  
Base Peak m/z=  
100.00000-1500.00000 F:  
FTMS + p ESI Full ms  
[100.00-1500.00] MS  
Pbistriata\_HDX

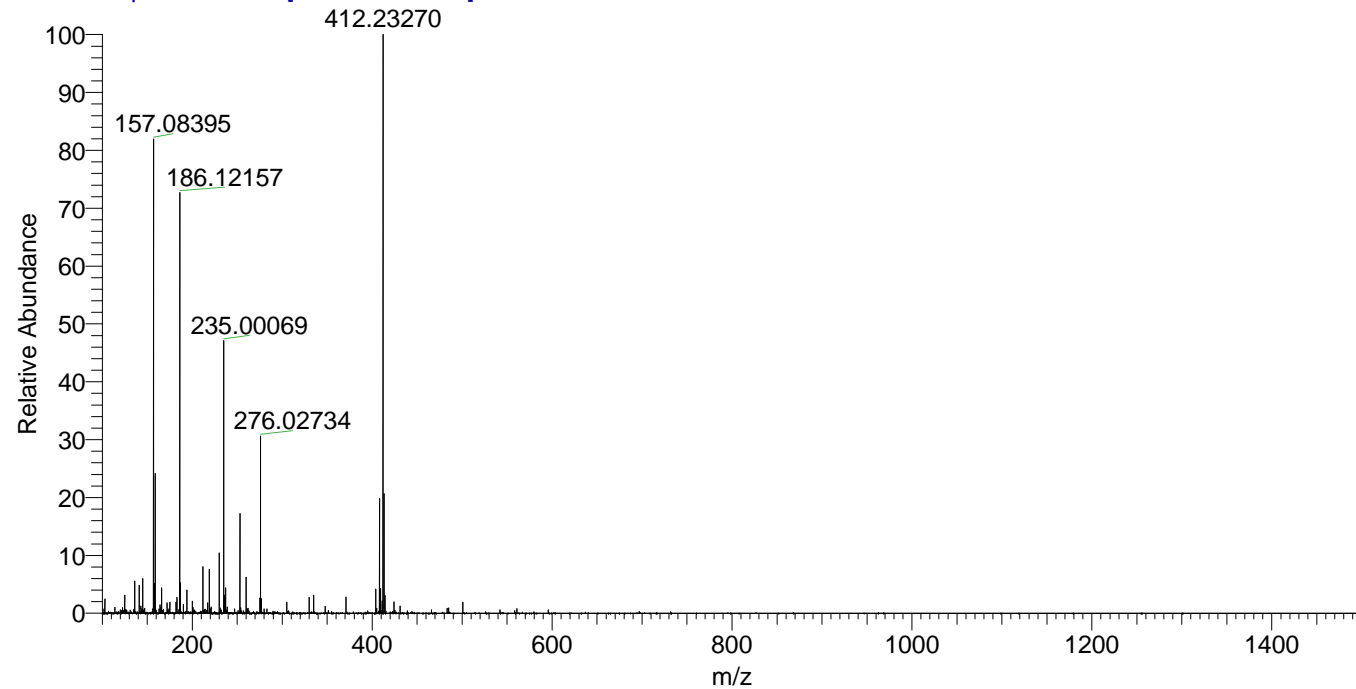
NL: 2.16E7  
Base Peak m/z=  
412.23032-412.23444 F: FTMS  
+ p ESI Full ms  
[100.00-1500.00] MS  
Pbistriata\_HDX

NL: 4.85E3  
Base Peak m/z=  
207.12220-207.12428 F: FTMS  
+ p ESI Full ms  
[100.00-1500.00] MS  
Pbistriata\_HDX

Pbistriata\_HDX#2729 RT: 16.80  
T: FTMS + p ESI Full ms [100.00-1500.00]  
m/z = 412.00000-413.00000

m/z	Intensity	Relative	Delta (ppm)	Composition
412.23270	21569564.0	100.00	-1.64	C <sub>20</sub> H <sub>20</sub> <sup>2</sup> H <sub>7</sub> O <sub>6</sub> N <sub>3</sub>
			2.11	C <sub>20</sub> H <sub>18</sub> <sup>2</sup> H <sub>8</sub> O <sub>6</sub> N <sub>3</sub>
			-5.40	C <sub>20</sub> H <sub>22</sub> <sup>2</sup> H <sub>6</sub> O <sub>6</sub> N <sub>3</sub>
			5.87	C <sub>20</sub> H <sub>16</sub> <sup>2</sup> H <sub>9</sub> O <sub>6</sub> N <sub>3</sub>
			-9.16	C <sub>20</sub> H <sub>24</sub> <sup>2</sup> H <sub>5</sub> O <sub>6</sub> N <sub>3</sub>
			9.62	C <sub>20</sub> H <sub>14</sub> <sup>2</sup> H <sub>10</sub> O <sub>6</sub> N <sub>3</sub>

Pbistriata\_HDX #2729 RT: 16.80 AV: 1 NL: 2.12E7  
T: FTMS + p ESI Full ms [100.00-1500.00]



Pbistriata\_HDX #2729 RT: 16.80 AV: 1 NL: 2.12E7  
T: FTMS + p ESI Full ms [100.00-1500.00]

