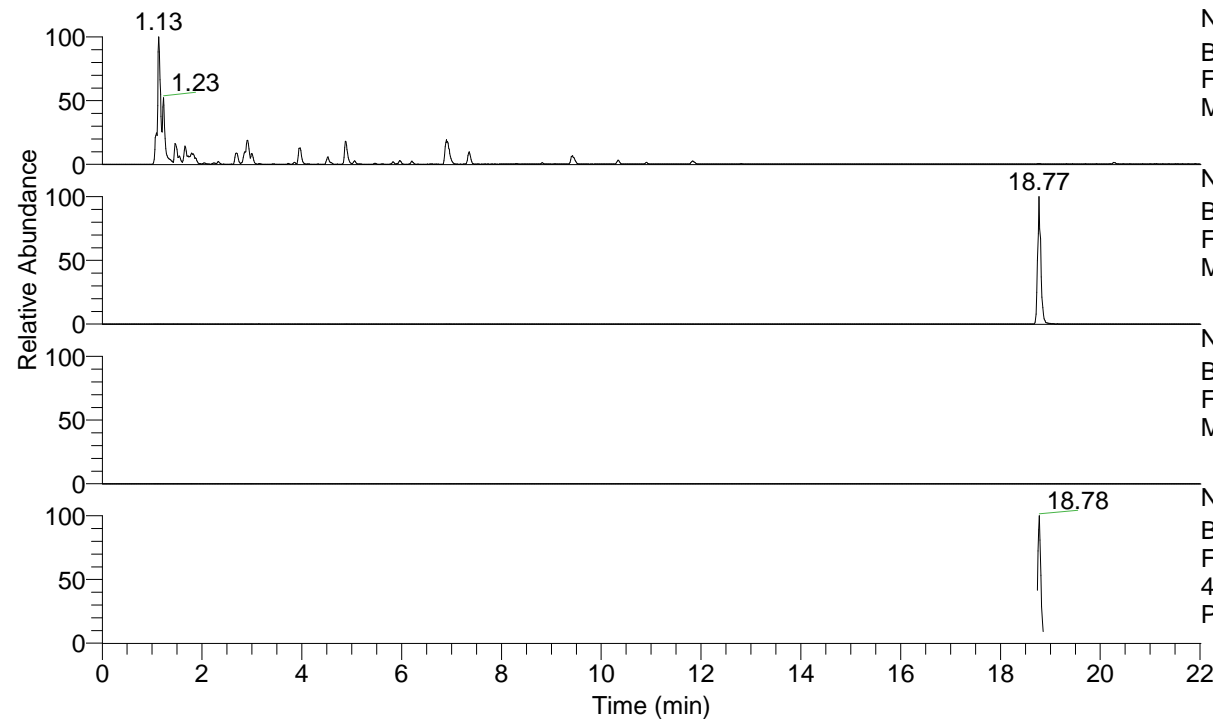


RT: 0.00 - 22.01



NL: 8.91E8
 Base Peak m/z= 100.00000-1500.00000 F:
 FTMS + p ESI Full ms [100.0000-1500.0000]
 MS Pbistriata

NL: 5.25E6
 Base Peak m/z= 404.17812-404.18620 F:
 FTMS + p ESI Full ms [100.0000-1500.0000]
 MS Pbistriata

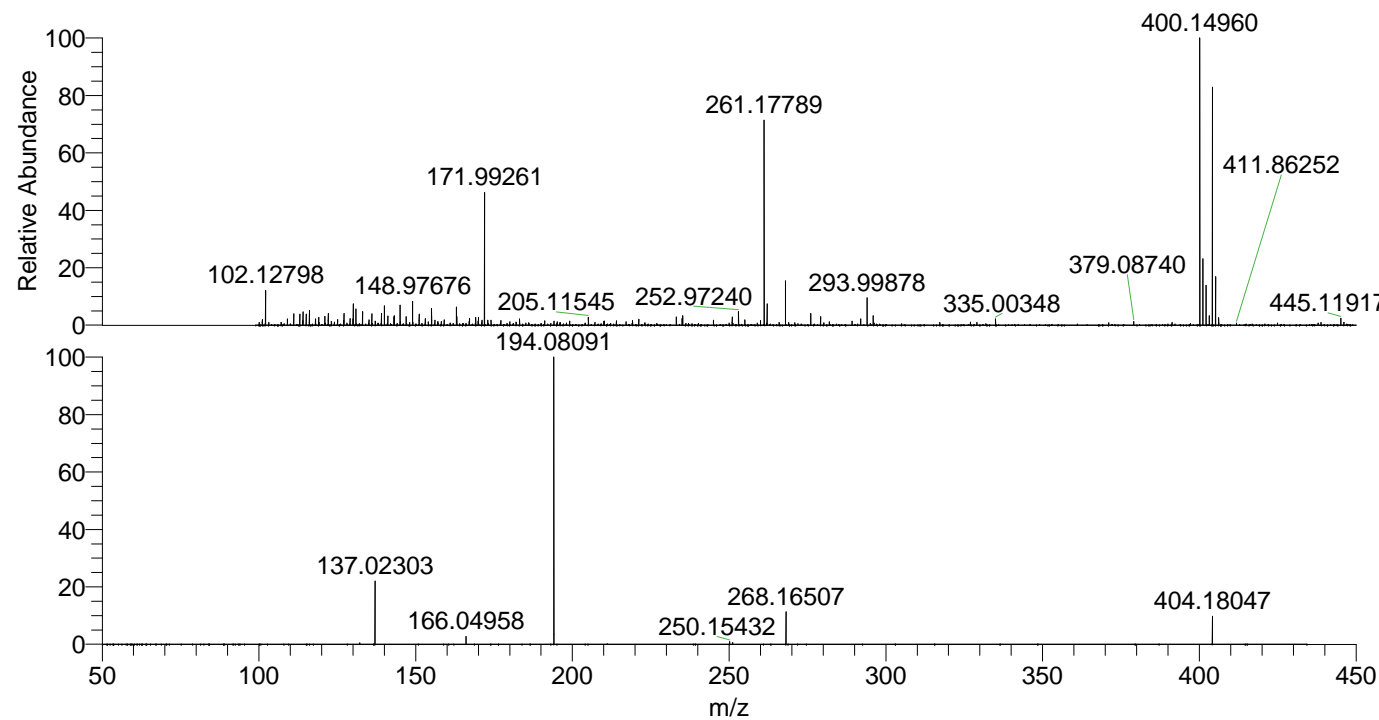
NL: 0
 Base Peak m/z= 202.59296-202.59702 F:
 FTMS + p ESI Full ms [100.0000-1500.0000]
 MS Pbistriata

NL: 1.93E6
 Base Peak m/z= 50.00000-1500.00000 F:
 FTMS + p ESI d Full ms2
 404.1808@hcd35.00 [50.0000-430.0000] MS
 Pbistriata

Pbistriata#7691-7740 RT: 18.74-18.86

F: FTMS + p ESI d Full ms2 404.18 ...
 m/z= 50.00000-1000.00000

m/z	Intensity	Relative
137.02303	209393.8	21.51
166.04958	26114.2	2.68
194.08091	973634.4	100.00
250.15432	7937.9	0.82
251.13868	6107.5	0.63
268.16507	108782.8	11.17
404.18047	94303.0	9.69



NL: 6.29E6
 Pbistriata#7705 RT: 18.77
 AV: 1 T: FTMS + p ESI Full
 ms [100.0000-1500.0000]

NL: 9.42E5
 Pbistriata#7650-7771 RT:
 18.74-18.86 AV: 9 F: FTMS
 + p ESI d Full ms2
 404.1808@hcd35.00
 [50.0000-430.0000]