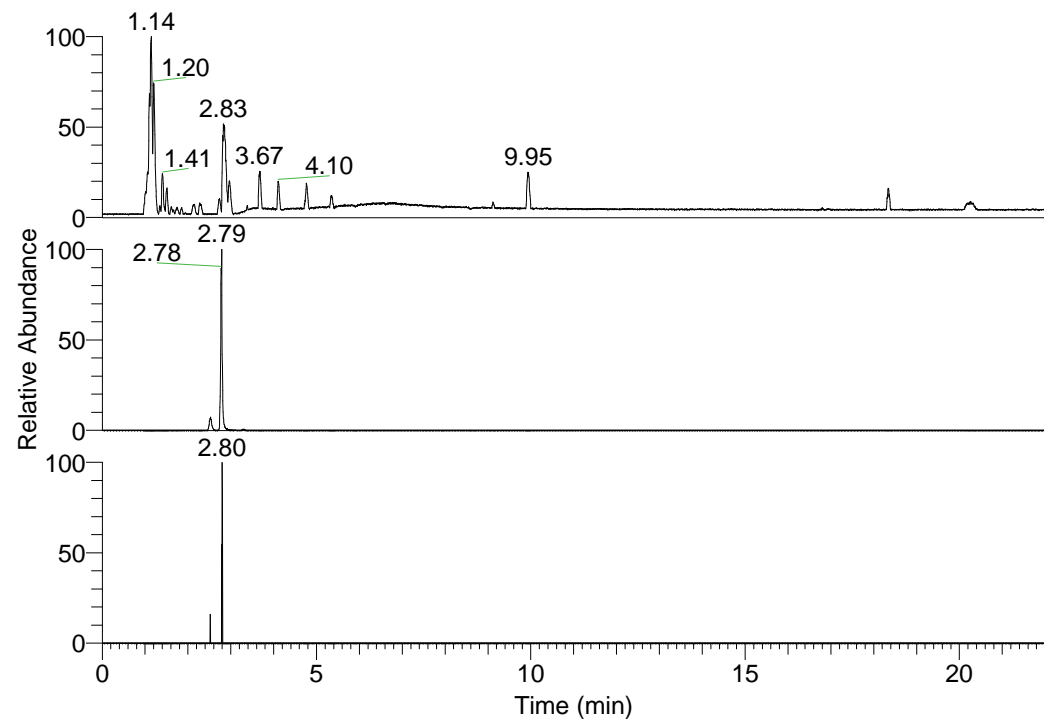


RT: 0.00 - 22.01



NL: 3.85E8
 Base Peak m/z=
 100.00000-1500.00000 F:
 FTMS + p ESI Full ms
 [100.00-1500.00] MS
 Pbistriata_HDX

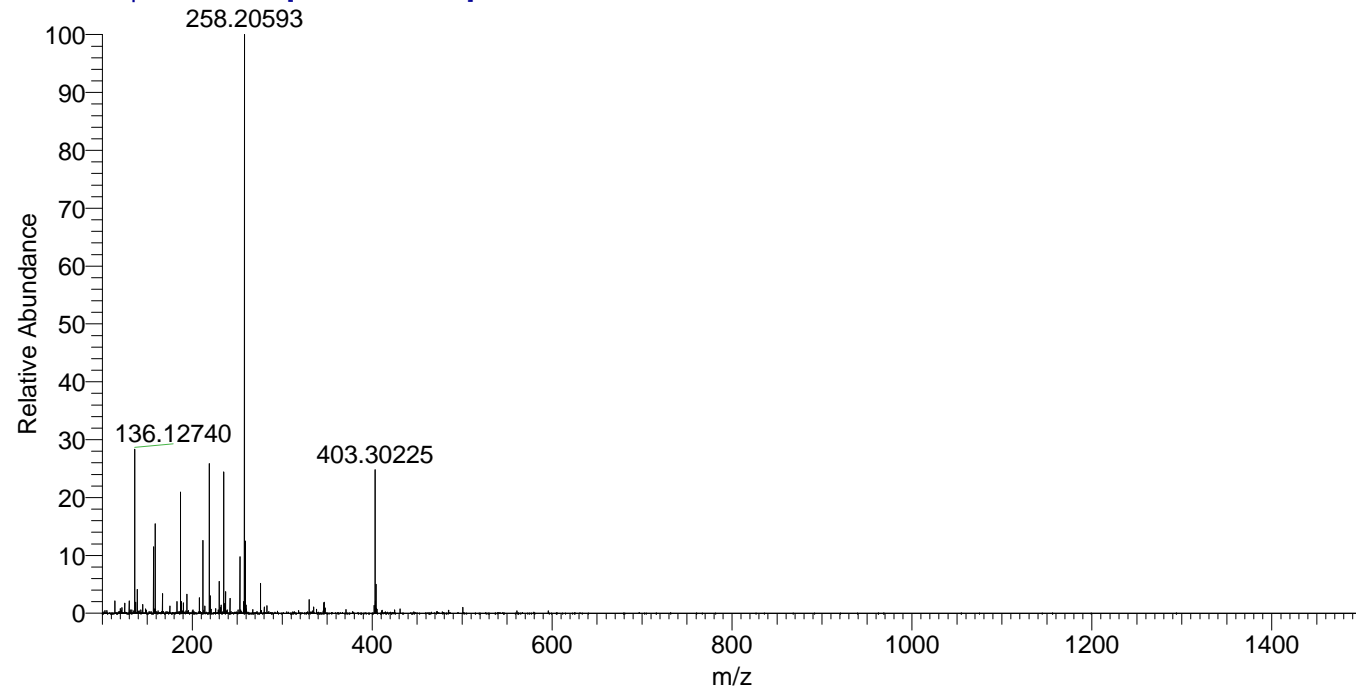
NL: 8.88E6
 Base Peak m/z=
 403.29990-403.30394 F: FTMS
 + p ESI Full ms
 [100.00-1500.00] MS
 Pbistriata_HDX

NL: 1.29E4
 Base Peak m/z=
 202.65700-202.65902 F: FTMS
 + p ESI Full ms
 [100.00-1500.00] MS
 Pbistriata_HDX

Pbistriata_HDX#449 RT: 2.79
 T: FTMS + p ESI Full ms [100.00-1500.00]
 m/z = 403.00000-404.00000

m/z	Intensity	Relative	Delta (ppm)	Composition
403.30225	8879730.0	100.00	-1.67	C ₁₉ H ₂₅ ² H ₈ O ₄ N ₅
			2.17	C ₁₉ H ₂₃ ² H ₉ O ₄ N ₅
			-5.51	C ₁₉ H ₂₇ ² H ₇ O ₄ N ₅
			6.01	C ₁₉ H ₂₁ ² H ₁₀ O ₄ N ₅
			-9.35	C ₁₉ H ₂₉ ² H ₆ O ₄ N ₅
			9.85	C ₁₉ H ₁₉ ² H ₁₁ O ₄ N ₅

Pbistriata_HDX #449 RT: 2.79 AV: 1 NL: 3.50E7
 T: FTMS + p ESI Full ms [100.00-1500.00]



Pbistriata_HDX #449 RT: 2.79 AV: 1 NL: 8.69E6
 T: FTMS + p ESI Full ms [100.00-1500.00]

