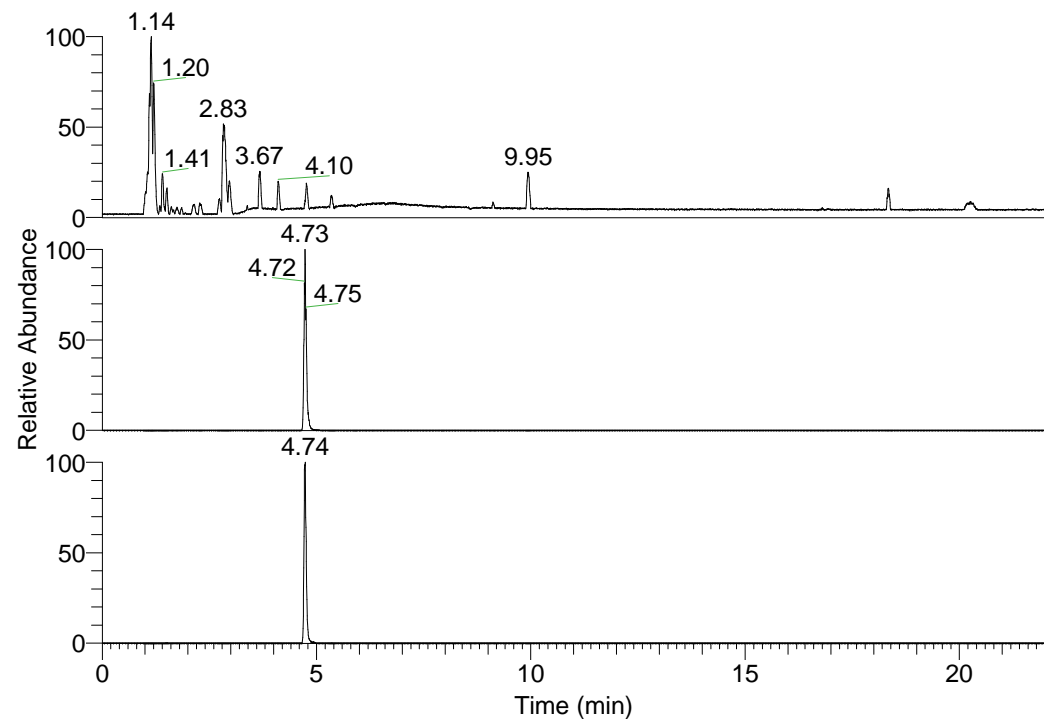


RT: 0.00 - 22.01



NL: 3.85E8  
 Base Peak m/z=  
 100.00000-1500.00000 F:  
 FTMS + p ESI Full ms  
 [100.00-1500.00] MS  
 Pbistriata\_HDX

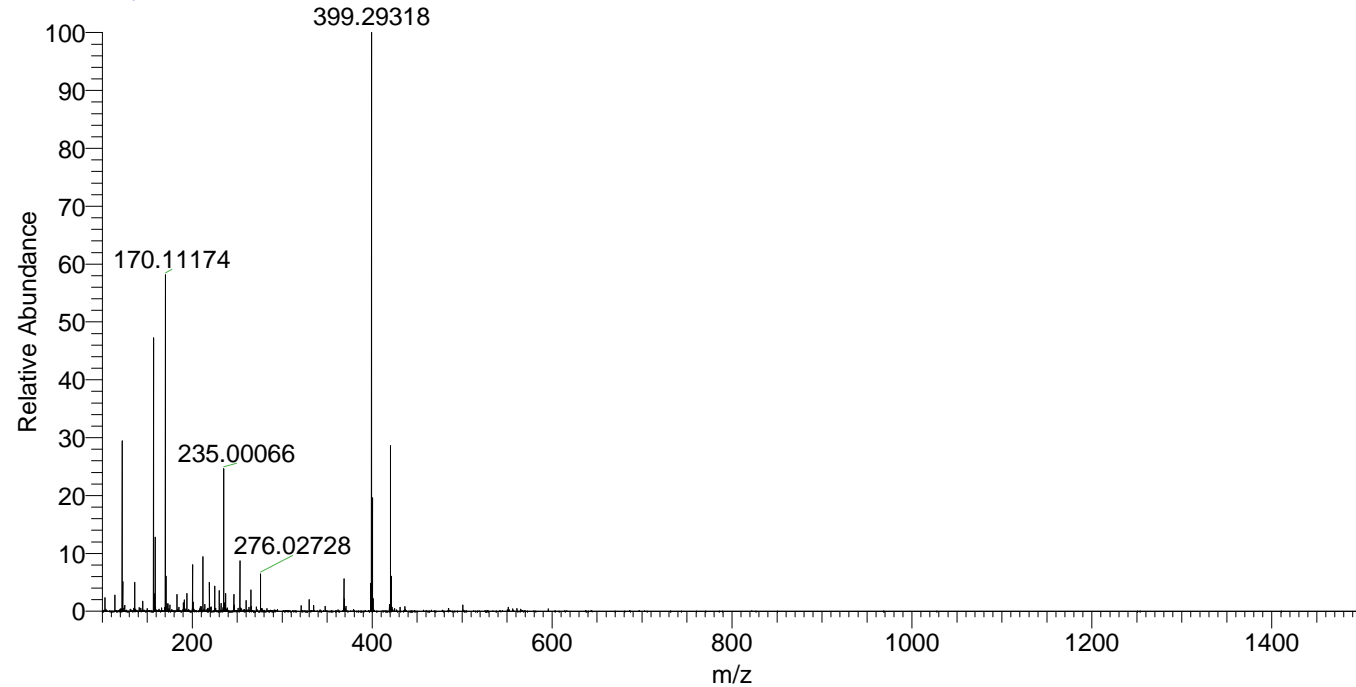
NL: 3.71E7  
 Base Peak m/z=  
 399.29088-399.29488 F: FTMS  
 + p ESI Full ms  
 [100.00-1500.00] MS  
 Pbistriata\_HDX

NL: 2.94E6  
 Base Peak m/z=  
 200.65249-200.65449 F: FTMS  
 + p ESI Full ms  
 [100.00-1500.00] MS  
 Pbistriata\_HDX

Pbistriata\_HDX#769 RT: 4.73  
 T: FTMS + p ESI Full ms [100.00-1500.00]  
 m/z= 399.00000-400.00000

m/z	Intensity	Relative	Delta (ppm)	Composition
399.29318	37053856.0	100.00	-1.75	C <sub>19</sub> H <sub>21</sub> <sup>2</sup> H <sub>9</sub> O <sub>3</sub> N <sub>6</sub>
			2.13	C <sub>19</sub> H <sub>19</sub> <sup>2</sup> H <sub>10</sub> O <sub>3</sub> N <sub>6</sub>
			-5.63	C <sub>19</sub> H <sub>23</sub> <sup>2</sup> H <sub>8</sub> O <sub>3</sub> N <sub>6</sub>
			6.01	C <sub>19</sub> H <sub>17</sub> <sup>2</sup> H <sub>11</sub> O <sub>3</sub> N <sub>6</sub>
			-9.50	C <sub>19</sub> H <sub>25</sub> <sup>2</sup> H <sub>7</sub> O <sub>3</sub> N <sub>6</sub>
			9.88	C <sub>19</sub> H <sub>15</sub> <sup>2</sup> H <sub>12</sub> O <sub>3</sub> N <sub>6</sub>

Pbistriata\_HDX #769 RT: 4.73 AV: 1 NL: 3.55E7  
 T: FTMS + p ESI Full ms [100.00-1500.00]



Pbistriata\_HDX #769 RT: 4.73 AV: 1 NL: 3.55E7  
 T: FTMS + p ESI Full ms [100.00-1500.00]

