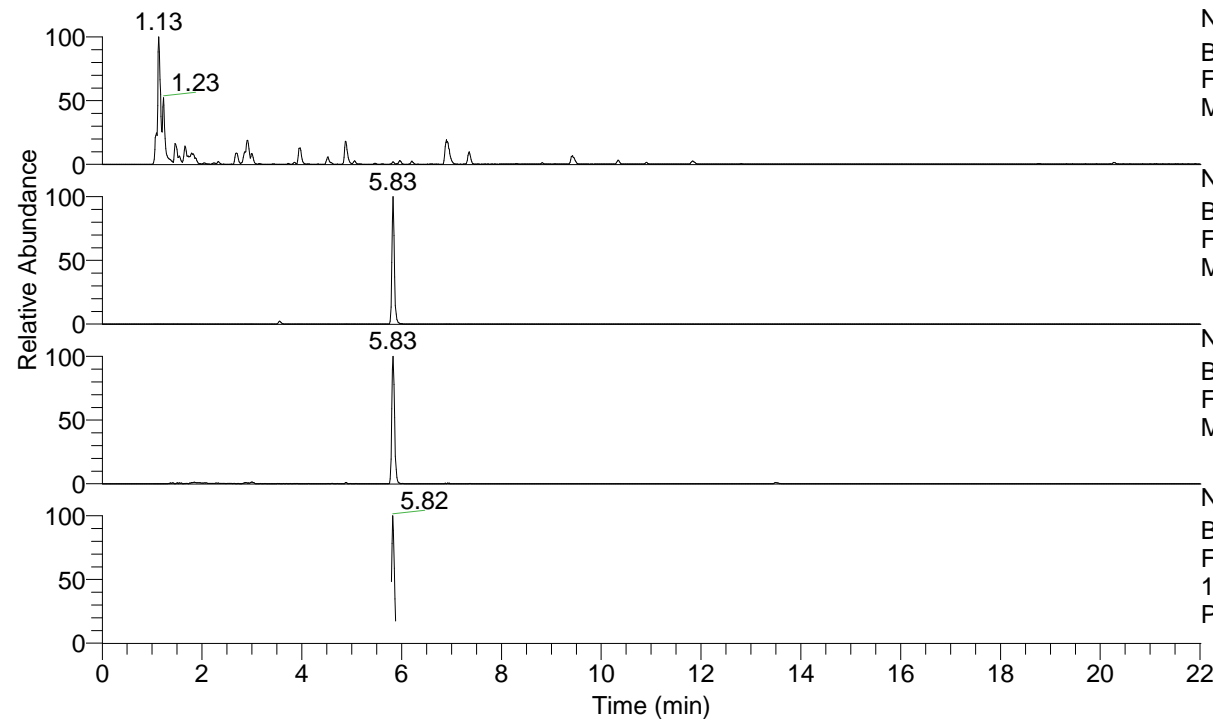


RT: 0.00 - 22.01



NL: 8.91E8
 Base Peak m/z= 100.00000-1500.00000 F:
 FTMS + p ESI Full ms [100.0000-1500.0000]
 MS Pbistriata

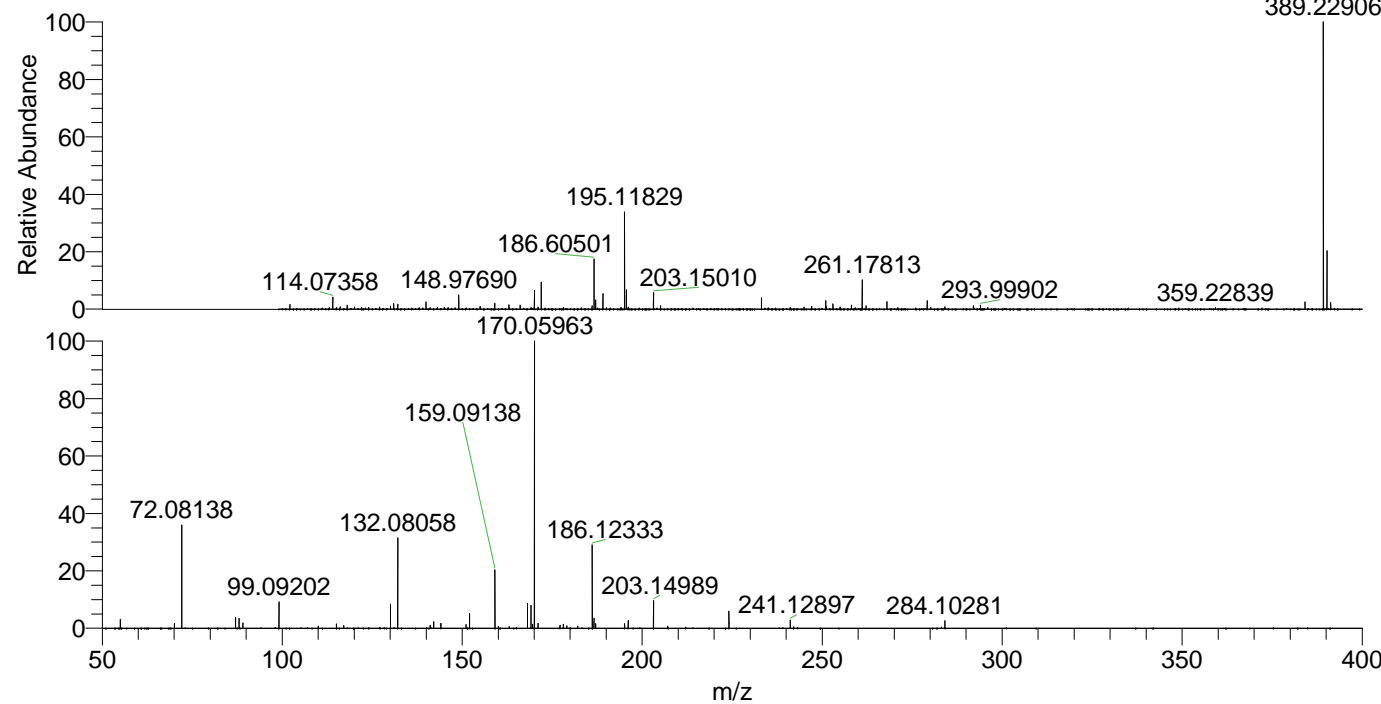
NL: 1.84E7
 Base Peak m/z= 389.22622-389.23400 F:
 FTMS + p ESI Full ms [100.0000-1500.0000]
 MS Pbistriata

NL: 6.28E6
 Base Peak m/z= 195.11702-195.12092 F:
 FTMS + p ESI Full ms [100.0000-1500.0000]
 MS Pbistriata

NL: 1.19E6
 Base Peak m/z= 50.00000-1500.00000 F:
 FTMS + p ESI d Full ms2
 195.1183@hcd35.00 [50.0000-415.0000] MS
 Pbistriata

Pbistriata#2454-2487 RT: 5.80-5.88
 F: FTMS + p ESI d Full ms2 195.12 ...
 m/z= 50.00000-1000.00000

m/z	Intensity	Relative
55.05498	21263.8	3.12
70.06567	11968.8	1.76
72.08138	250649.6	36.78
87.05575	25727.7	3.77
88.03972	23569.4	3.46
89.10766	12237.2	1.80
99.09202	63847.9	9.37
110.02381	4739.7	0.70
115.05437	10202.8	1.50
117.05737	6421.7	0.94
130.06501	57914.6	8.50
132.08058	215382.9	31.60
141.10168	7622.5	1.12
142.06493	15151.7	2.22
144.08050	11250.0	1.65
151.08631	8537.6	1.25
152.07027	35423.0	5.20
159.09138	137837.3	20.22
160.07559	4059.7	0.60
163.03903	4014.3	0.59
168.11287	59464.6	8.72
169.08457	3518.1	0.52
169.09711	55261.8	8.11
169.57840	9671.3	1.42
170.05963	681565.6	100.00
171.06306	11660.0	1.71
177.16325	7473.4	1.10
178.09251	9731.3	1.43
179.08141	5820.7	0.85
182.09201	4649.5	0.68
186.12333	197859.9	29.03
186.60507	23818.0	3.49
187.08642	11526.9	1.69
195.08754	11274.1	1.65
196.10783	19507.9	2.86
203.14989	65278.1	9.58
207.07636	4682.6	0.69
224.10245	41181.1	6.04
241.12897	19525.9	2.86
284.10281	17515.2	2.57



NL: 1.84E7
 Pbistriata#2467 RT: 5.83
 AV: 1 T: FTMS + p ESI Full
 ms [100.0000-1500.0000]

NL: 6.78E5
 Pbistriata#2401-2504 RT:
 5.80-5.88 AV: 7 F: FTMS +
 p ESI d Full ms2
 195.1183@hcd35.00
 [50.0000-415.0000]