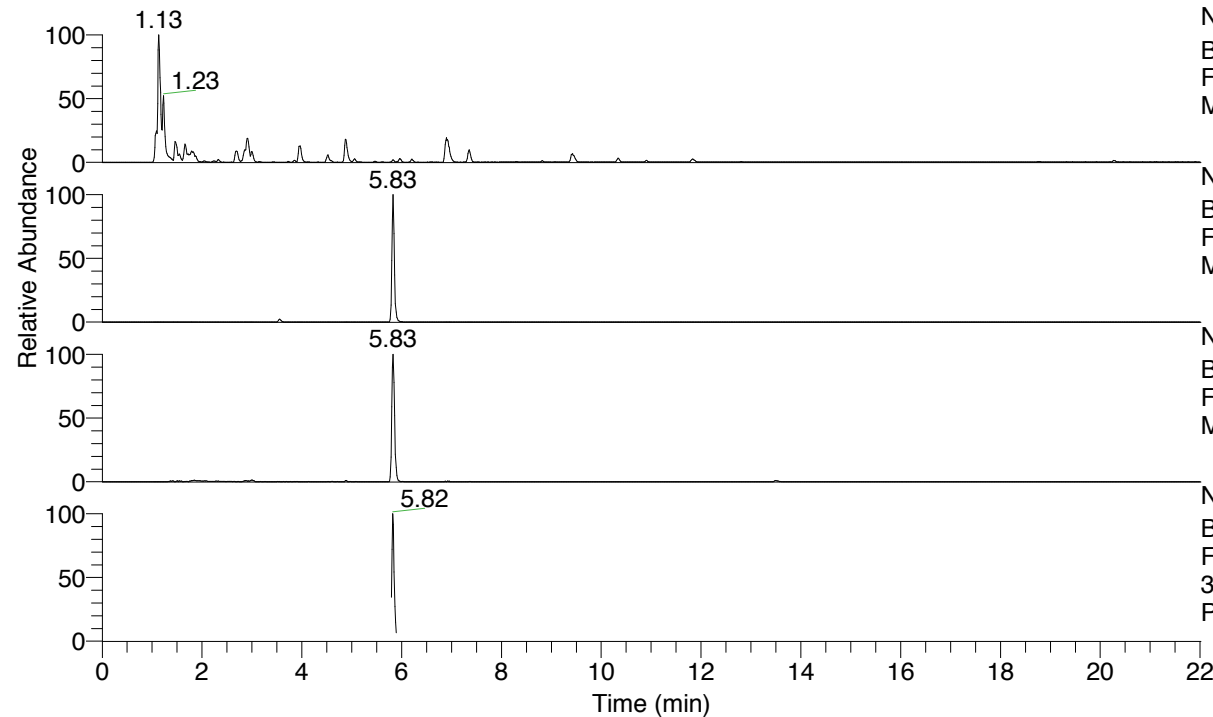


RT: 0.00 - 22.01



NL: 8.91E8
 Base Peak m/z= 100.00000-1500.00000 F:
 FTMS + p ESI Full ms [100.0000-1500.0000]
 MS Pbistriata

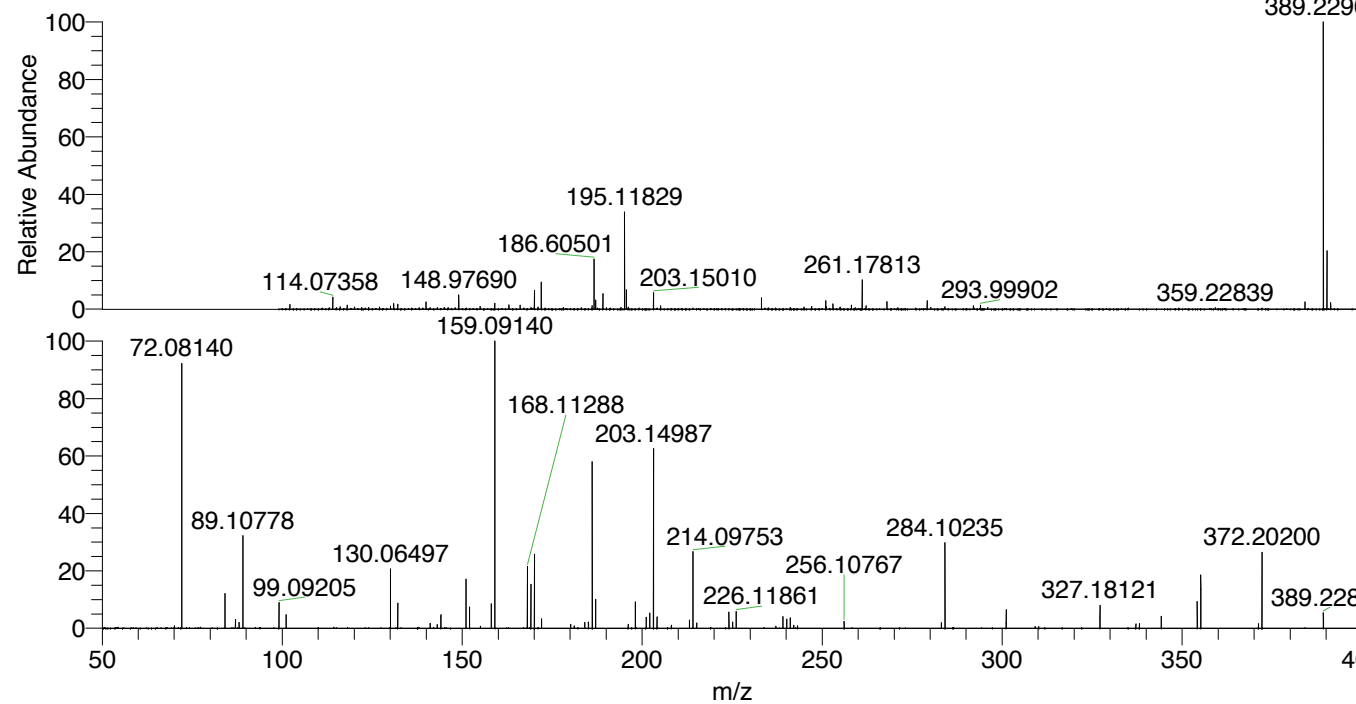
NL: 1.84E7
 Base Peak m/z= 389.22622-389.23400 F:
 FTMS + p ESI Full ms [100.0000-1500.0000]
 MS Pbistriata

NL: 6.28E6
 Base Peak m/z= 195.11702-195.12092 F:
 FTMS + p ESI Full ms [100.0000-1500.0000]
 MS Pbistriata

NL: 1.31E6
 Base Peak m/z= 50.00000-1500.00000 F:
 FTMS + p ESI d Full ms2
 389.2291@hcd35.00 [50.0000-415.0000] MS
 Pbistriata

Pbistriata#2452-2492 RT: 5.79-5.89
 F: FTMS + p ESI d Full ms2 389.23 ...
 m/z= 50.00000-1000.00000

m/z	Intensity	Relative
72.08140	563918.9	92.68
72.08553	9278.9	1.53
84.08127	75061.3	12.34
87.05591	18336.7	3.01
88.03980	12448.1	2.05
89.10778	200019.3	32.87
99.09205	53654.0	8.82
101.10763	29247.4	4.81
130.06497	128045.7	21.05
132.08086	53260.5	8.75
141.10170	10347.6	1.70
144.08064	28582.0	4.70
151.08635	104688.6	17.21
152.07039	44745.7	7.35
158.06005	51284.9	8.43
159.09140	608437.7	100.00
168.11288	129406.3	21.27
169.07582	17648.4	2.90
169.09702	91999.8	15.12
170.05977	160121.0	26.32
172.07173	20091.7	3.30
184.07544	12407.0	2.04
185.07082	13472.3	2.21
185.13950	9754.0	1.60
186.12341	358773.4	58.97
187.08663	60791.0	9.99
196.10777	8632.0	1.42
198.12311	57035.9	9.37
201.10221	23116.4	3.80
202.08634	32834.8	5.40
203.14987	376590.2	61.89
204.11305	24664.8	4.05
213.13782	17526.5	2.88
214.09753	164610.0	27.05
214.11855	82857.1	13.62
215.15025	11008.2	1.81
224.10309	33951.4	5.58
225.13472	13358.9	2.20
226.11861	35202.5	5.79
239.08147	24598.5	4.04
240.14941	19152.8	3.15
241.12927	21603.0	3.55
256.10767	14312.8	2.35
283.11788	11632.6	1.91
284.10235	178452.9	29.33
301.12974	39224.7	6.45
327.18121	47992.7	7.89
337.16617	8765.5	1.44
338.14770	10055.9	1.65
344.20804	25651.8	4.22
354.19100	56431.6	9.27
355.17591	112885.0	18.55
371.21753	9855.7	1.62
372.20200	161922.0	26.61
389.22873	32928.7	5.41



389.22906 NL: 1.84E7
 Pbistriata#2467 RT: 5.83
 AV: 1 T: FTMS + p ESI Full
 ms [100.0000-1500.0000]

NL: 5.99E5
 Pbistriata#2412-2527 RT:
 5.79-5.89 AV: 8 F: FTMS +
 p ESI d Full ms2
 389.2291@hcd35.00
 [50.0000-415.0000]

Pbistriata#2452-2492 RT: 5.79-5.89 AV: 8

F: FTMS + p ESI d Full ms2 389.2300@hcd35.00 [50.0000-415.0000]

m/z= 50.00000-1000.00000

m/z	Intensity	Relative
70.06574	5287.2	0.87
72.08140	563918.9	92.68
72.08553	9278.9	1.53
84.08127	75061.3	12.34
87.05591	18336.7	3.01
88.03980	12448.1	2.05
89.10778	200019.3	32.87
99.09205	53654.0	8.82
101.10763	29247.4	4.81
130.06497	128045.7	21.05
132.08086	53260.5	8.75
141.10170	10347.6	1.70
143.04546	7745.6	1.27
144.08064	28582.0	4.70
151.08635	104688.6	17.21
152.07039	44745.7	7.35
155.04455	4352.5	0.72
158.06005	51284.9	8.43
159.09140	608437.7	100.00
168.11288	129406.3	21.27
169.07582	17648.4	2.90
169.09702	91999.8	15.12
170.05977	160121.0	26.32
170.07451	3162.3	0.52
172.07173	20091.7	3.30
180.11262	8567.1	1.41
181.09690	4917.7	0.81
184.07544	12407.0	2.04
185.07082	13472.3	2.21
185.13950	9754.0	1.60
186.12341	358773.4	58.97
187.08663	60791.0	9.99
196.10777	8632.0	1.42
198.12311	57035.9	9.37
201.10221	23116.4	3.80
202.08634	32834.8	5.40
203.14987	376590.2	61.89
204.11305	24664.8	4.05
208.10787	6366.7	1.05

Pbistriata#2452-2492 RT: 5.79-5.89 AV: 8

F: FTMS + p ESI d Full ms2 389.2300@hcd35.00 [50.0000-415.0000]

m/z= 50.00000-1000.00000

m/z	Intensity	Relative
213.13782	17526.5	2.88
214.09753	164610.0	27.05
214.11855	82857.1	13.62
215.15025	11008.2	1.81
224.10309	33951.4	5.58
225.13472	13358.9	2.20
226.11861	35202.5	5.79
237.13458	4150.4	0.68
239.08147	24598.5	4.04
240.14941	19152.8	3.15
241.12927	21603.0	3.55
242.09266	6385.5	1.05
243.14481	4968.8	0.82
256.10767	14312.8	2.35
283.11788	11632.6	1.91
284.10235	178452.9	29.33
301.12974	39224.7	6.45
309.17129	3700.0	0.61
310.15506	3558.9	0.58
327.18121	47992.7	7.89
337.16617	8765.5	1.44
338.14770	10055.9	1.65
344.20804	25651.8	4.22
354.19100	56431.6	9.27
355.17591	112885.0	18.55
371.21753	9855.7	1.62
372.20200	161922.0	26.61
389.22873	32928.7	5.41