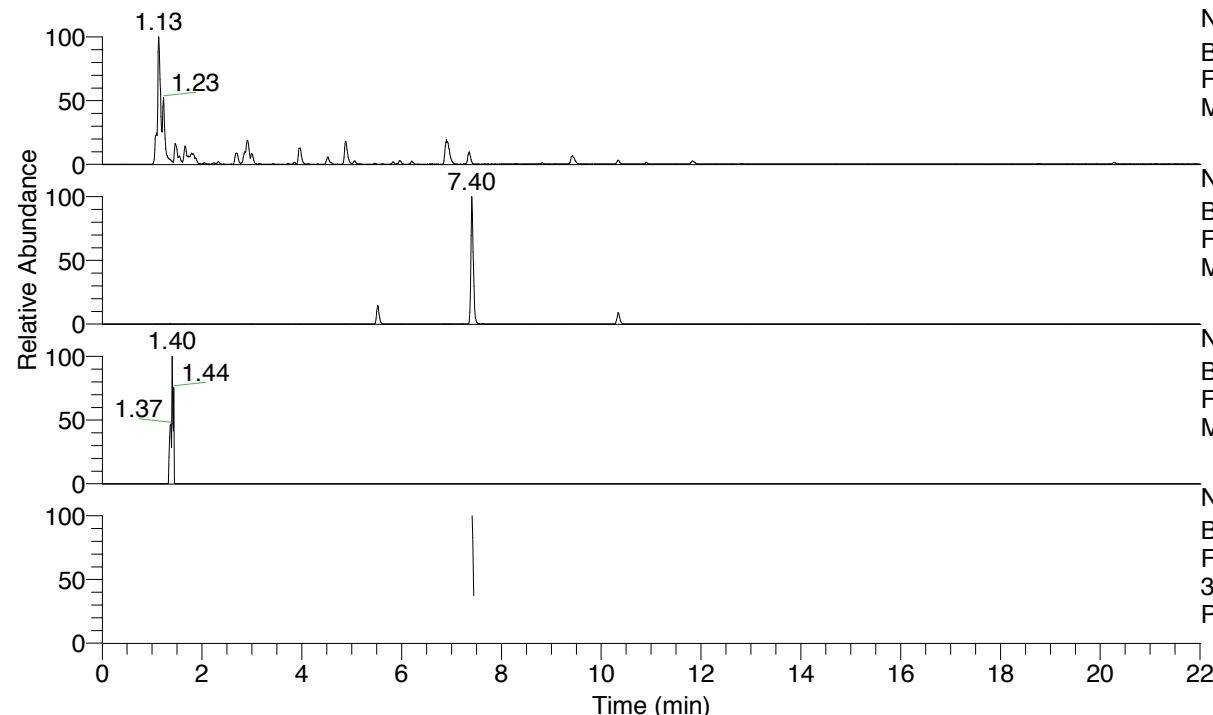


RT: 0.00 - 22.01



NL: 8.91E8
 Base Peak m/z= 100.00000-1500.00000 F:
 FTMS + p ESI Full ms [100.0000-1500.0000]
 MS Pbistriata

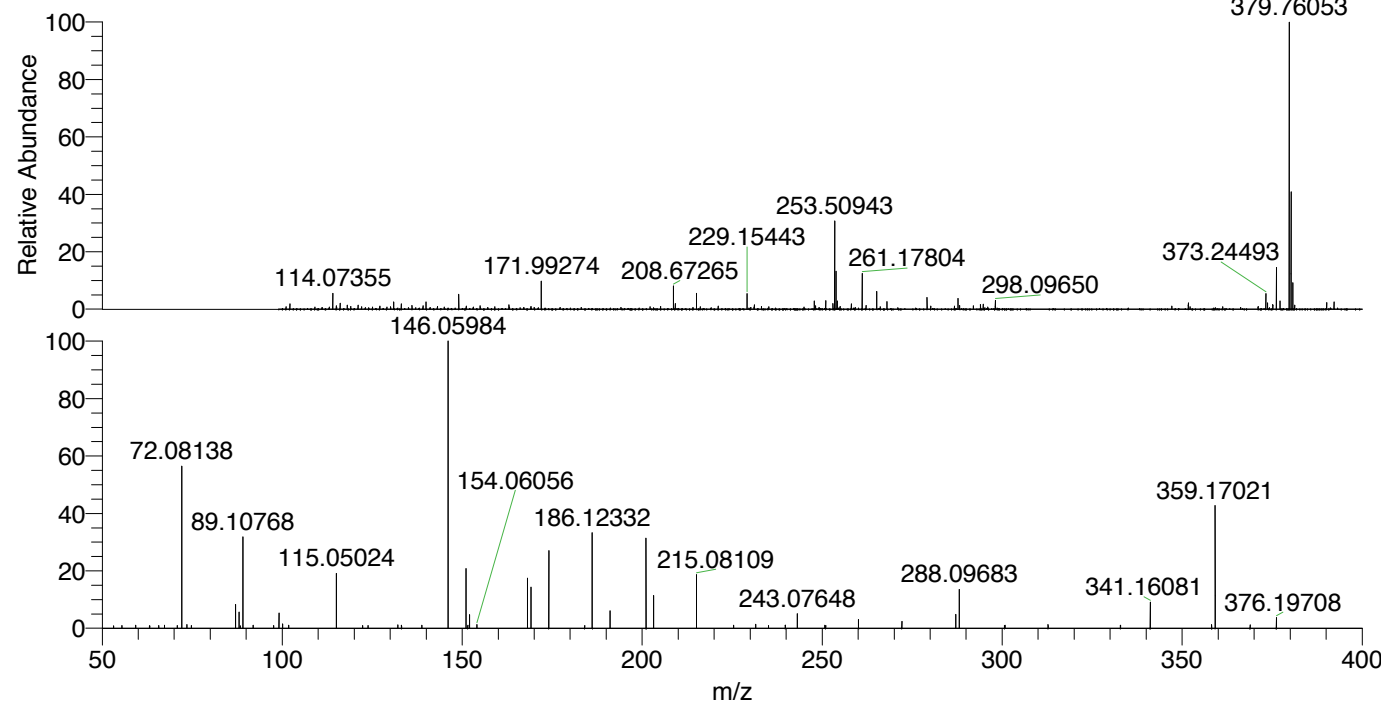
NL: 2.77E6
 Base Peak m/z= 376.19472-376.20224 F:
 FTMS + p ESI Full ms [100.0000-1500.0000]
 MS Pbistriata

NL: 4.16E4
 Base Peak m/z= 188.60126-188.60504 F:
 FTMS + p ESI Full ms [100.0000-1500.0000]
 MS Pbistriata

NL: 2.53E5
 Base Peak m/z= 50.00000-1500.00000 F:
 FTMS + p ESI d Full ms2
 376.1975@hcd35.00 [50.0000-400.0000] MS
 Pbistriata

Pbistriata#3131-3144 RT: 7.41-7.45
 F: FTMS + p ESI d Full ms2 376.20 ...
 m/z= 50.00000-1000.00000

m/z	Intensity	Relative
59.31605	1849.6	1.06
65.73657	1679.7	0.96
67.31227	1838.7	1.05
70.84528	1784.7	1.02
72.08138	102006.4	58.39
73.54091	2170.9	1.24
87.05580	14939.7	8.55
88.03964	9901.6	5.67
89.10267	2155.5	1.23
89.10768	55976.3	32.04
91.93784	1831.5	1.05
99.09218	9178.7	5.25
100.11254	2654.2	1.52
101.80405	1759.1	1.01
115.05024	33647.1	19.26
122.35568	1710.7	0.98
123.88127	1717.0	0.98
132.12688	2023.4	1.16
133.14057	1869.4	1.07
138.81529	1825.8	1.05
146.05984	174708.3	100.00
151.08636	36340.6	20.80
151.55102	1868.9	1.07
152.07065	8316.7	4.76
154.06056	2291.9	1.31
168.11292	30397.3	17.40
169.09694	25359.4	14.52
174.05456	47942.2	27.44
184.01034	1763.9	1.01
186.12332	58209.5	33.32
191.08120	10637.7	6.09
201.06545	54897.8	31.42
203.15012	19747.6	11.30
215.08109	32654.6	18.69
225.41869	1899.1	1.09
231.53334	2371.9	1.36
235.08746	1686.7	0.97
239.75868	1887.7	1.08
239.80897	1841.1	1.05
243.07648	8884.2	5.09
250.75525	1800.0	1.03
250.97440	1772.2	1.01
260.10372	5351.9	3.06
272.13952	4088.6	2.34
287.11354	8673.0	4.96
288.09683	23591.0	13.50
300.66825	1751.9	1.00
300.77084	1925.4	1.10
312.76092	2176.9	1.25
332.86545	1927.2	1.10
341.16081	15823.3	9.06
358.18611	2228.6	1.28
359.17021	75199.0	43.04
368.90960	2114.2	1.21
376.19708	6464.7	3.70



NL: 1.86E7
 Pbistriata#3127 RT: 7.40
 AV: 1 T: FTMS + p ESI Full
 ms [100.0000-1500.0000]

NL: 1.74E5
 Pbistriata#3078-3165 RT:
 7.41-7.45 AV: 3 F: FTMS +
 p ESI d Full ms2
 376.1975@hcd35.00
 [50.0000-400.0000]

Pbistriata#3131-3144 RT: 7.41-7.45 AV: 3

F: FTMS + p ESI d Full ms2 376.2000@hcd35.00 [50.0000-400.0000]

m/z= 50.00000-1000.00000

m/z	Intensity	Relative
53.12457	1541.4	0.88
55.44736	1560.4	0.89
59.31605	1849.6	1.06
63.11486	1513.5	0.87
63.22068	1503.3	0.86
65.73657	1679.7	0.96
67.31227	1838.7	1.05
70.84528	1784.7	1.02
72.08138	102006.4	58.39
73.54091	2170.9	1.24
74.77413	1614.3	0.92
87.05580	14939.7	8.55
88.03964	9901.6	5.67
88.40211	1521.5	0.87
89.10267	2155.5	1.23
89.10768	55976.3	32.04
91.93784	1831.5	1.05
97.61343	1571.1	0.90
99.09218	9178.7	5.25
100.11254	2654.2	1.52
101.80405	1759.1	1.01
115.05024	33647.1	19.26
122.35568	1710.7	0.98
123.88127	1717.0	0.98
132.12688	2023.4	1.16
133.14057	1869.4	1.07
138.81529	1825.8	1.05
146.05984	174708.3	100.00
151.08636	36340.6	20.80
151.55102	1868.9	1.07
152.07065	8316.7	4.76
154.06056	2291.9	1.31
168.11292	30397.3	17.40
169.09694	25359.4	14.52
174.05456	47942.2	27.44
184.01034	1763.9	1.01
186.12332	58209.5	33.32
191.08120	10637.7	6.09
201.06545	54897.8	31.42

Pbistriata#3131-3144 RT: 7.41-7.45 AV: 3

F: FTMS + p ESI d Full ms2 376.2000@hcd35.00 [50.0000-400.0000]

m/z= 50.00000-1000.00000

m/z	Intensity	Relative
203.15012	19747.6	11.30
215.08109	32654.6	18.69
225.41869	1899.1	1.09
231.53334	2371.9	1.36
235.08746	1686.7	0.97
239.75868	1887.7	1.08
239.80897	1841.1	1.05
243.07648	8884.2	5.09
250.75525	1800.0	1.03
250.97440	1772.2	1.01
260.10372	5351.9	3.06
272.13952	4088.6	2.34
287.11354	8673.0	4.96
288.09683	23591.0	13.50
300.66825	1751.9	1.00
300.77084	1925.4	1.10
312.76092	2176.9	1.25
332.86545	1927.2	1.10
341.16081	15823.3	9.06
358.18611	2228.6	1.28
359.17021	75199.0	43.04
368.90960	2114.2	1.21
376.19708	6464.7	3.70