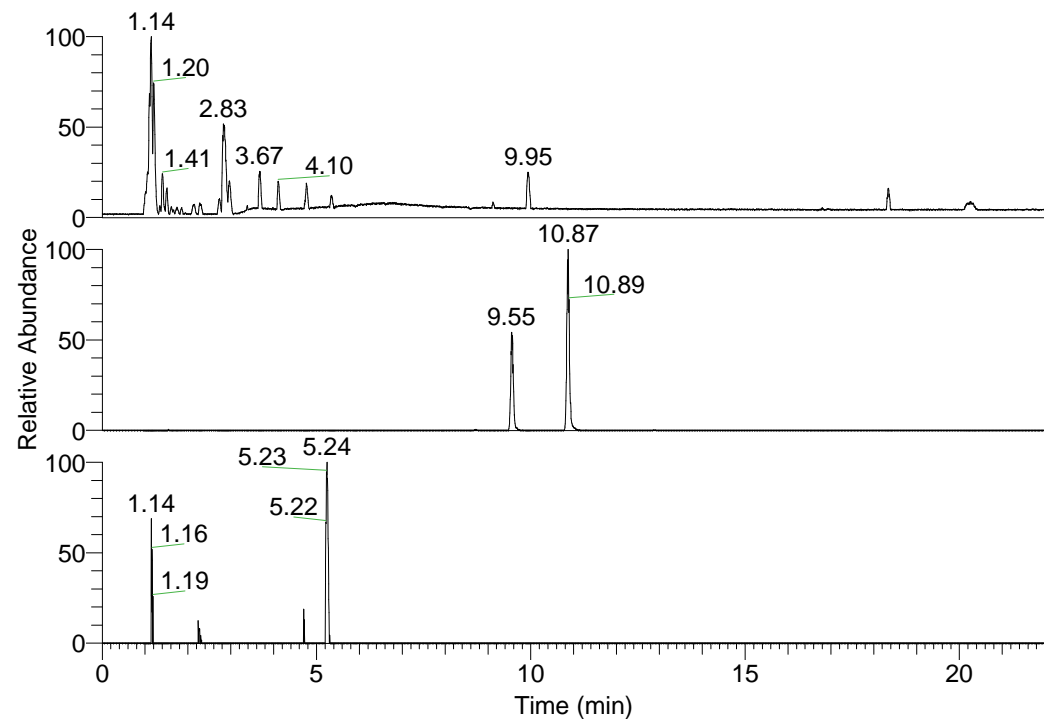


RT: 0.00 - 22.01



NL: 3.85E8
 Base Peak m/z=
 100.00000-1500.00000 F:
 FTMS + p ESI Full ms
 [100.00-1500.00] MS
 Pbistriata_HDX

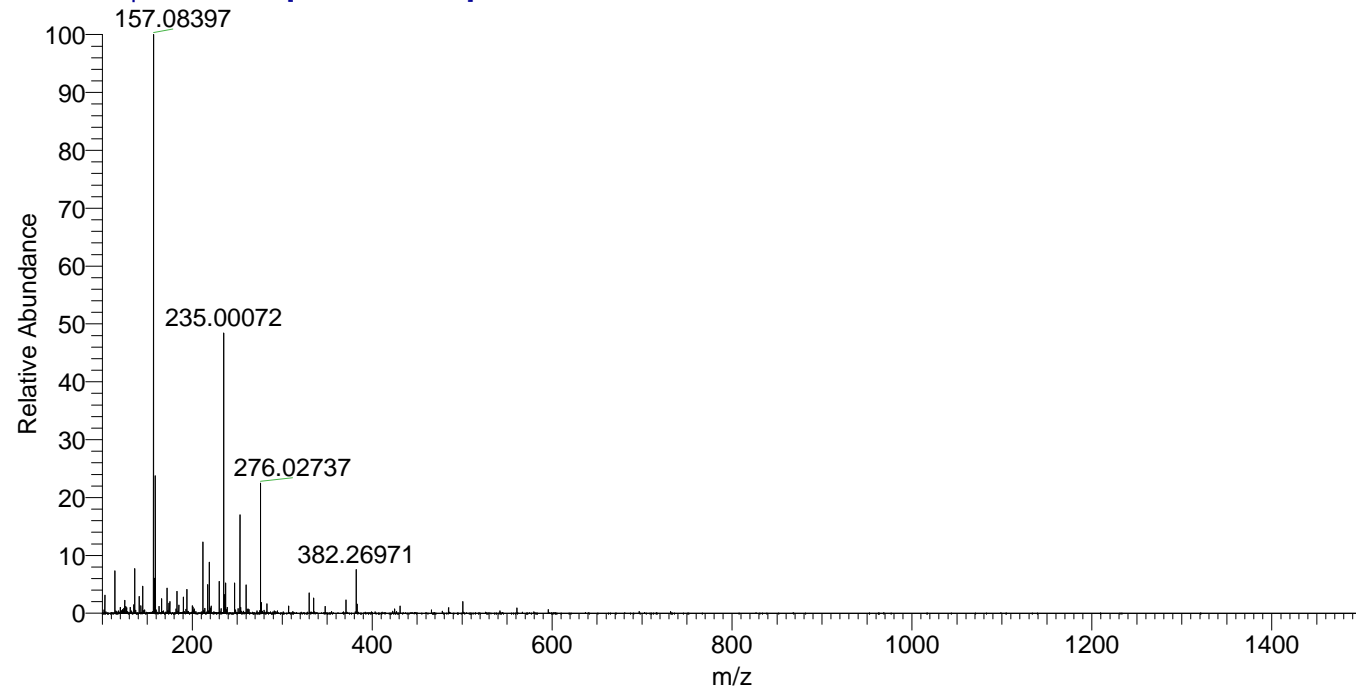
NL: 2.73E6
 Base Peak m/z=
 382.26752-382.27134 F: FTMS
 + p ESI Full ms
 [100.00-1500.00] MS
 Pbistriata_HDX

NL: 2.14E5
 Base Peak m/z=
 192.14081-192.14273 F: FTMS
 + p ESI Full ms
 [100.00-1500.00] MS
 Pbistriata_HDX

Pbistriata_HDX#1561 RT: 9.55
 T: FTMS + p ESI Full ms [100.00-1500.00]
 m/z= 382.00000-383.00000

| m/z | Intensity | Relative | Delta (ppm) | Composition |
|-----------|-----------|----------|-------------|---|
| 382.26971 | 1481841.0 | 100.00 | -1.87 | C ₁₉ H ₂₂ ² H ₇ O ₃ N ₅ |
| | | | 2.18 | C ₁₉ H ₂₀ ² H ₈ O ₃ N ₅ |
| | | | -5.92 | C ₁₉ H ₂₄ ² H ₆ O ₃ N ₅ |
| | | | 6.23 | C ₁₉ H ₁₈ ² H ₉ O ₃ N ₅ |
| | | | -9.97 | C ₁₉ H ₂₆ ² H ₅ O ₃ N ₅ |

Pbistriata_HDX #1561 RT: 9.55 AV: 1 NL: 1.95E7
 T: FTMS + p ESI Full ms [100.00-1500.00]



Pbistriata_HDX #1561 RT: 9.55 AV: 1 NL: 1.48E6
 T: FTMS + p ESI Full ms [100.00-1500.00]

