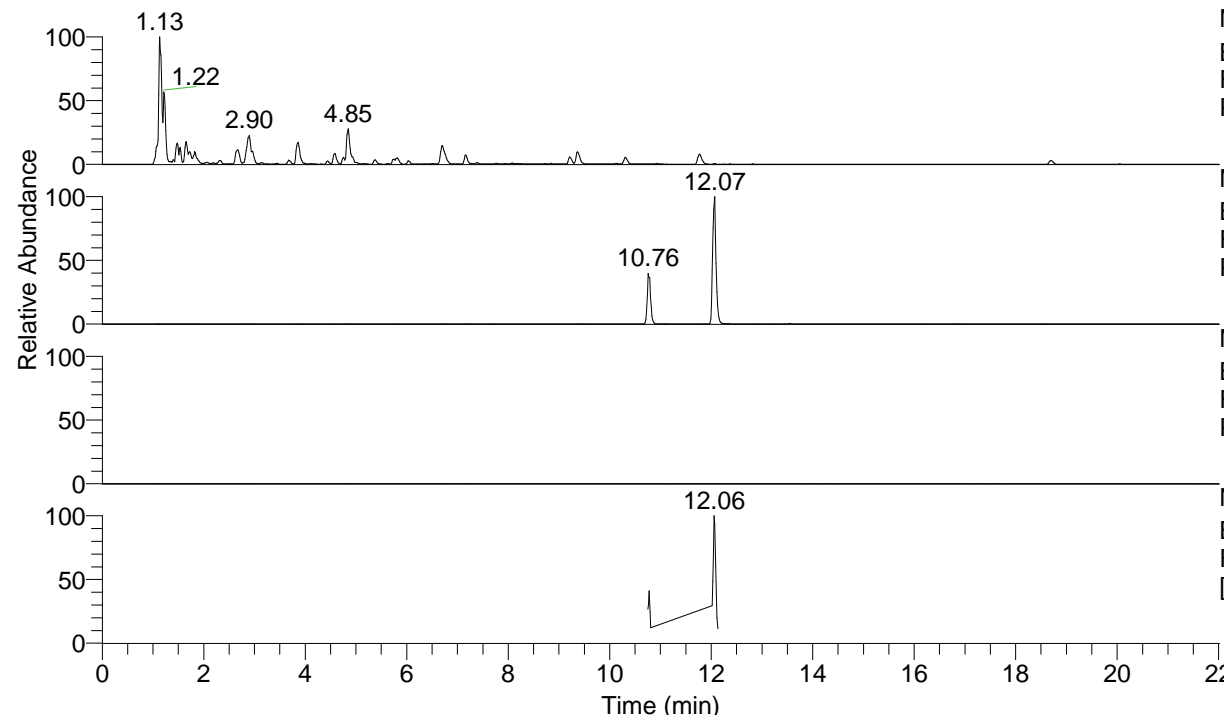


RT: 0.00 - 22.01



NL: 4.34E8
 Base Peak m/z= 100.00000-1500.00000 F:
 FTMS + p ESI Full ms [100.00-1500.00] MS
 Pbistriata20

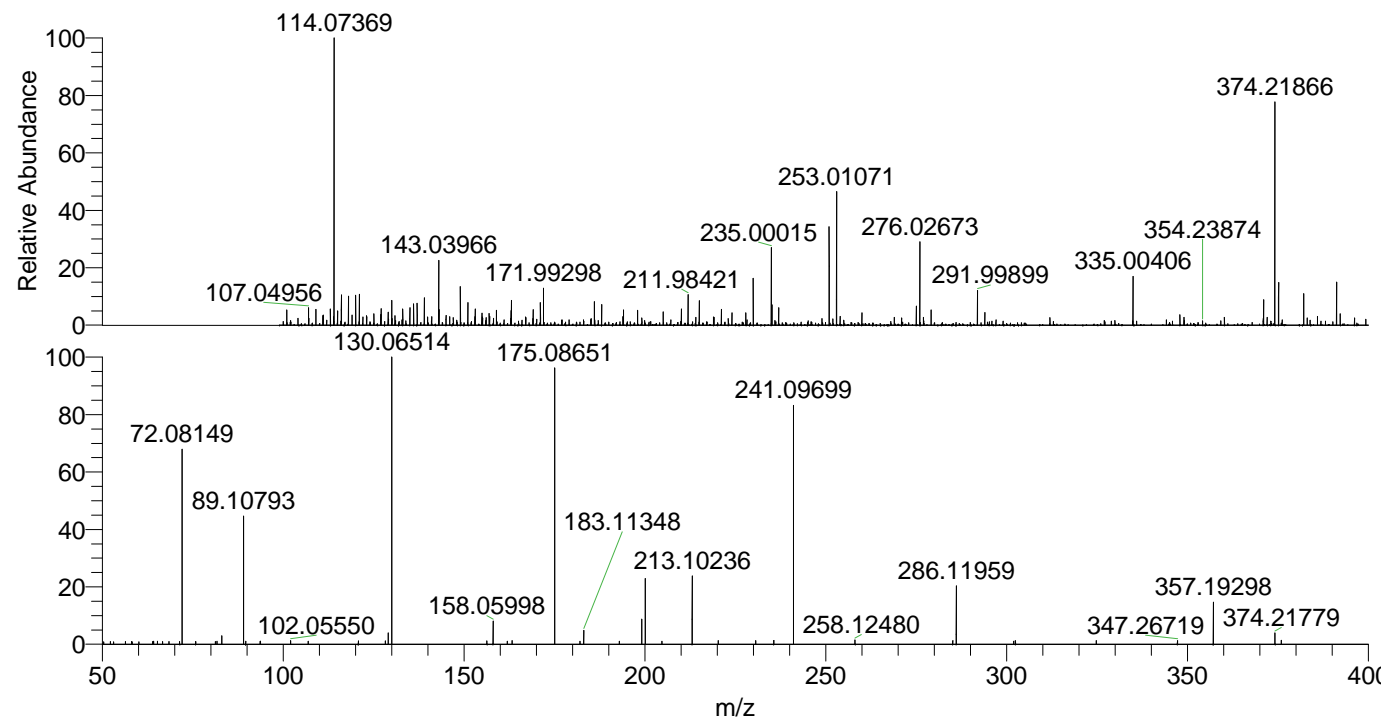
NL: 2.41E6
 Base Peak m/z= 374.21734-374.22108 F:
 FTMS + p ESI Full ms [100.00-1500.00] MS
 Pbistriata20

NL: 0
 Base Peak m/z= 187.61258-187.61446 F:
 FTMS + p ESI Full ms [100.00-1500.00] MS
 Pbistriata20

NL: 2.63E5
 Base Peak m/z= 50.00000-1500.00000 F:
 FTMS + p ESI d Full ms2 374.22@hcd35.00
 [50.00-400.00] MS Pbistriata20

Pbistriata20#4414-4437 RT:
 F: FTMS + p ESI d Full ms2 374.22 ...
 m/z= 50.00000-1000.00000

m/z	Intensity	Relative
50.40599	568.4	0.88
52.27206	648.4	1.00
53.18132	533.2	0.82
56.45758	622.2	0.96
58.09158	621.3	0.96
58.23844	569.5	0.88
60.16673	536.9	0.83
63.93134	590.6	0.91
64.22961	655.7	1.01
65.27955	651.1	1.01
66.67610	615.7	0.95
68.41398	631.8	0.98
71.41302	611.5	0.95
72.08149	45636.0	70.58
75.84022	601.1	0.93
81.30319	612.8	0.95
81.71309	649.2	1.00
83.06156	1880.1	2.91
89.10793	28802.1	44.55
89.64986	656.3	1.02
93.64891	649.9	1.01
93.76318	682.8	1.06
102.05550	852.8	1.32
106.92504	673.4	1.04
120.80102	752.6	1.16
128.27270	729.1	1.13
129.06661	2598.3	4.02
130.06514	64658.3	100.00
156.36252	766.2	1.19
158.05998	5208.8	8.06
162.00575	686.5	1.06
163.30807	818.6	1.27
175.08651	62419.3	96.54
182.10973	701.5	1.08
183.11348	3250.9	5.03
192.94500	679.4	1.05
199.15569	5659.0	8.75
200.13990	14850.7	22.97
204.75204	674.1	1.04
213.10236	15570.8	24.08
220.30491	851.7	1.32
230.68708	846.6	1.31
235.66436	837.5	1.30
241.09699	55583.7	85.97
258.12480	976.9	1.51
285.13680	875.3	1.35
286.11959	13157.0	20.35
301.99619	677.7	1.05
302.47058	825.1	1.28
324.83353	831.7	1.29
347.26719	838.9	1.30
357.19298	9472.1	14.65
374.21779	2561.9	3.96
375.97965	871.4	1.35



NL: 1.20E6
 Pbistriata20#4417 RT:
 10.76 AV: 1 T: FTMS + p
 ESI Full lock ms
 [100.00-1500.00]

NL: 6.45E4
 Pbistriata20#4412-4439
 RT: 10.75-10.81 AV: 5 F:
 FTMS + p ESI d Full ms2
 374.22@hcd35.00
 [50.00-400.00]