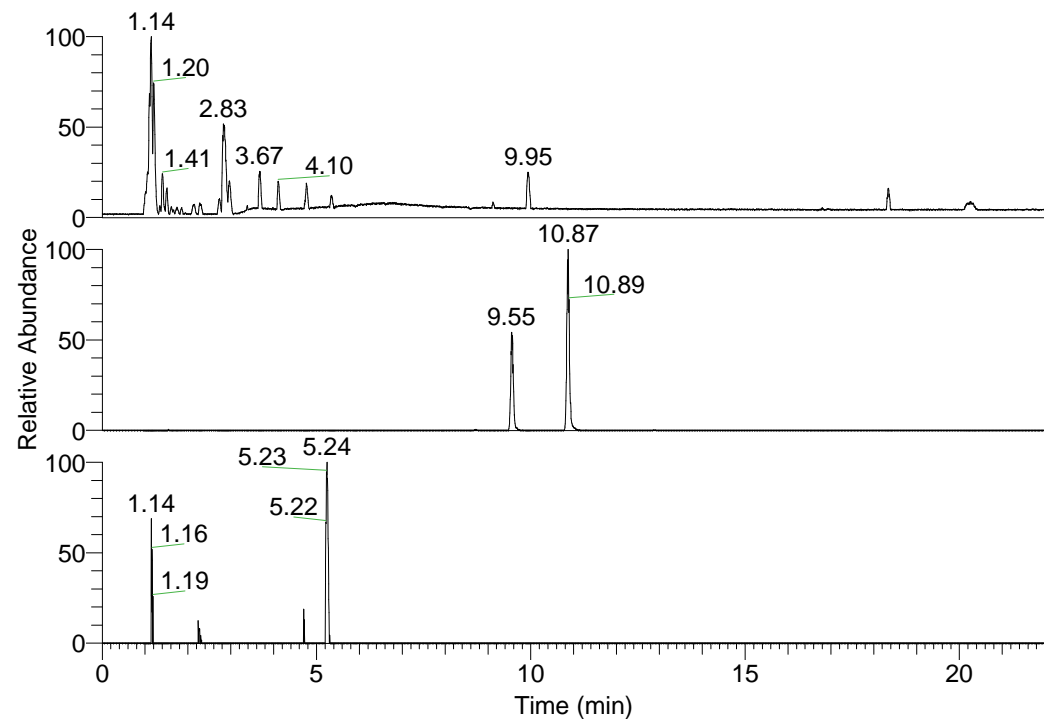


RT: 0.00 - 22.01



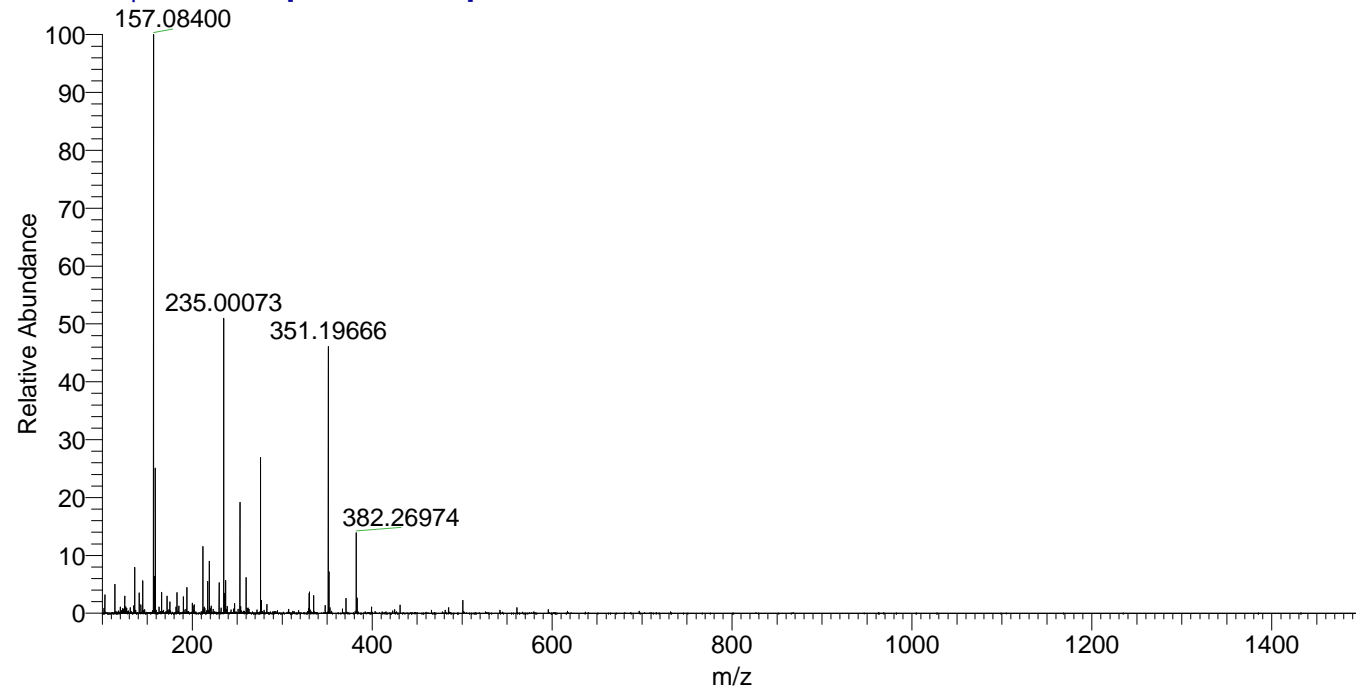
NL: 3.85E8
 Base Peak m/z=
 100.00000-1500.00000 F:
 FTMS + p ESI Full ms
 [100.00-1500.00] MS
 Pbistriata_HDX

NL: 2.73E6
 Base Peak m/z=
 382.26752-382.27134 F: FTMS
 + p ESI Full ms
 [100.00-1500.00] MS
 Pbistriata_HDX

Pbistriata_HDX#1776 RT: 10.87
 T: FTMS + p ESI Full ms [100.00-1500.00]
 m/z= 382.00000-383.00000

m/z	Intensity	Relative	Delta (ppm)	Composition
382.26974	2733653.5	100.00	-1.79	C ₁₉ H ₂₂ ² H ₇ O ₃ N ₅
			2.26	C ₁₉ H ₂₀ ² H ₈ O ₃ N ₅
			-5.84	C ₁₉ H ₂₄ ² H ₆ O ₃ N ₅
			6.31	C ₁₉ H ₁₈ ² H ₉ O ₃ N ₅
			-9.89	C ₁₉ H ₂₆ ² H ₅ O ₃ N ₅

Pbistriata_HDX #1776 RT: 10.87 AV: 1 NL: 1.97E7
 T: FTMS + p ESI Full ms [100.00-1500.00]



Pbistriata_HDX #1776 RT: 10.87 AV: 1 NL: 2.73E6
 T: FTMS + p ESI Full ms [100.00-1500.00]

