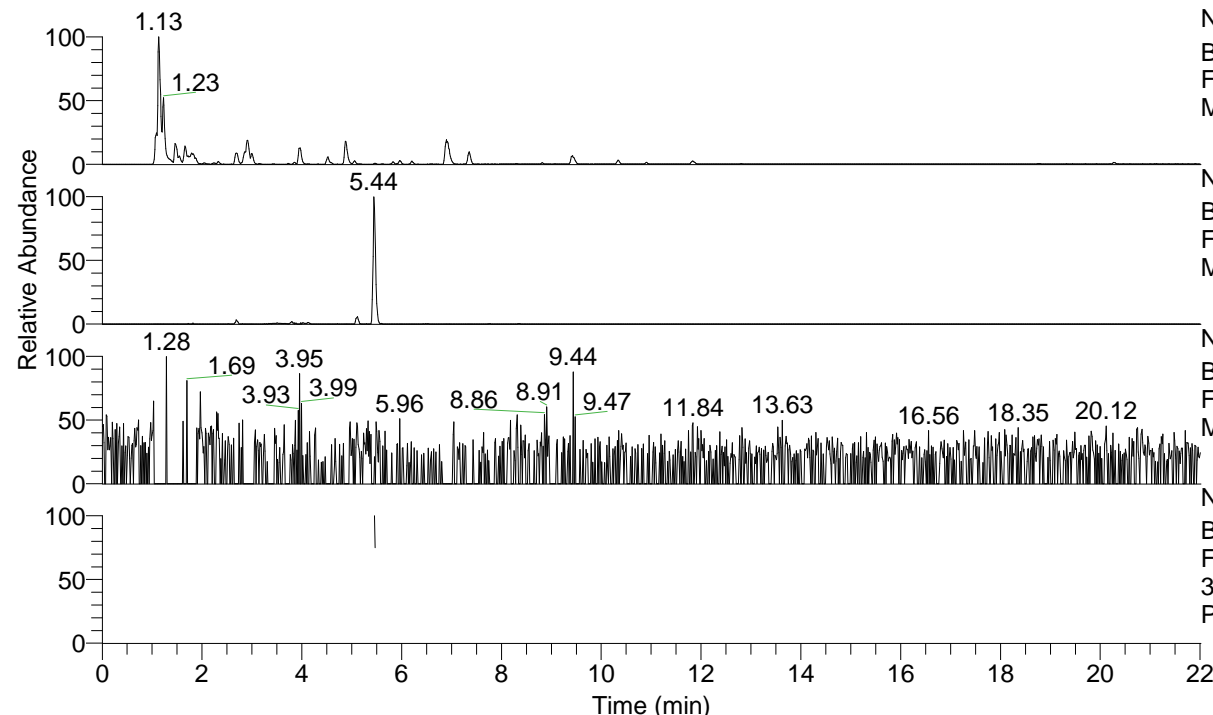


RT: 0.00 - 22.01



NL: 8.91E8
 Base Peak m/z= 100.00000-1500.00000 F:
 FTMS + p ESI Full ms [100.0000-1500.0000]
 MS Pbistriata

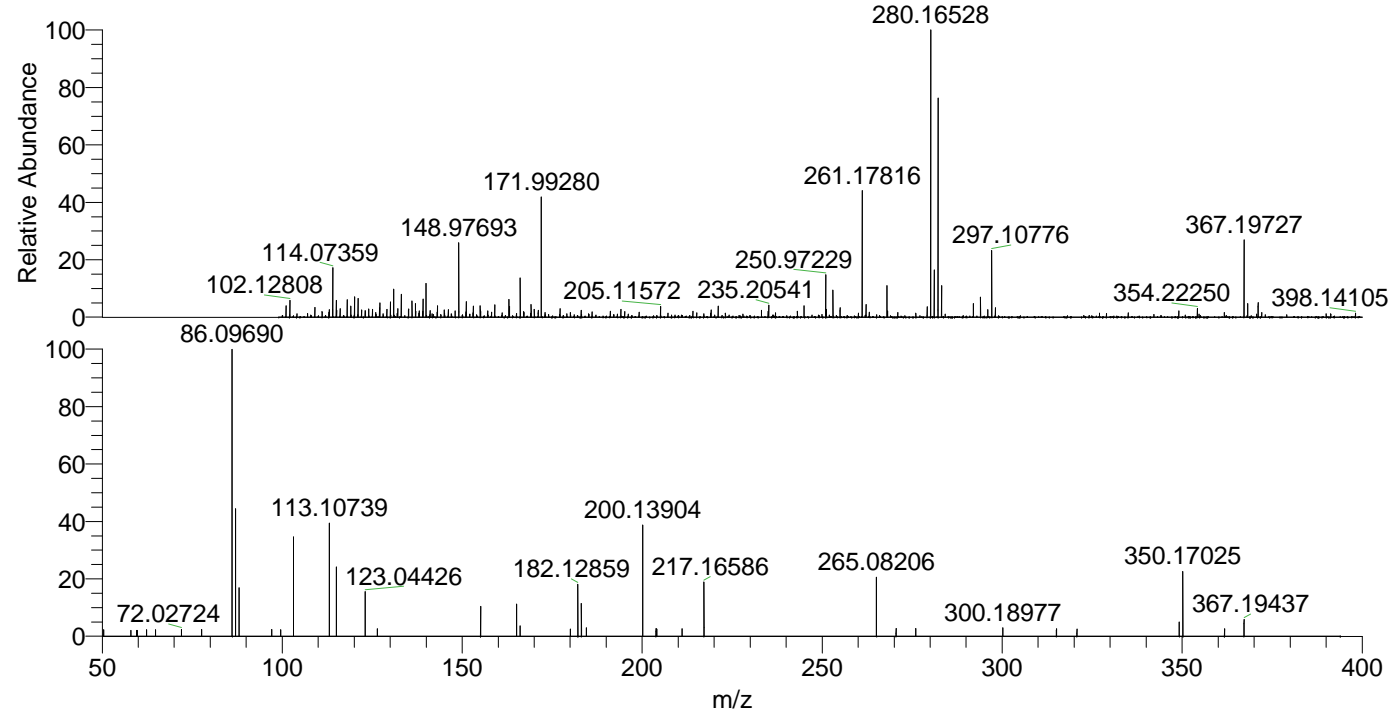
NL: 1.25E6
 Base Peak m/z= 367.19447-367.20181 F:
 FTMS + p ESI Full ms [100.0000-1500.0000]
 MS Pbistriata

NL: 1.58E4
 Base Peak m/z= 184.10115-184.10483 F:
 FTMS + p ESI Full ms [100.0000-1500.0000]
 MS Pbistriata

NL: 1.28E5
 Base Peak m/z= 50.00000-1500.00000 F:
 FTMS + p ESI d Full ms2
 367.1973@hcd35.00 [50.0000-390.0000] MS
 Pbistriata

Pbistriata#2315-2322 RT: 5.45-5.47
 F: FTMS + p ESI d Full ms2 367.20 ...
 m/z= 50.00000-1000.00000

m/z	Intensity	Relative
50.38801	2427.9	2.32
57.94573	2083.8	1.99
59.55566	2134.6	2.04
59.77601	2122.7	2.03
62.33934	2418.9	2.31
64.79463	2349.3	2.25
72.02724	2530.6	2.42
77.59707	2466.3	2.36
86.09690	104599.0	100.00
87.05570	46783.1	44.73
88.03984	17507.2	16.74
97.08401	2546.2	2.43
99.60951	2357.0	2.25
103.12321	36596.1	34.99
113.10739	41406.8	39.59
113.11444	2428.2	2.32
115.05041	25629.9	24.50
123.04426	16678.3	15.94
126.43261	2702.8	2.58
155.11816	10727.7	10.26
165.10191	11593.9	11.08
166.08713	3771.2	3.61
180.07478	2649.4	2.53
182.12859	19028.2	18.19
183.11284	11772.7	11.26
184.49523	3099.3	2.96
200.13904	41416.8	39.60
203.84035	2900.1	2.77
204.03845	2579.6	2.47
211.09286	2752.3	2.63
217.16586	19504.4	18.65
265.08206	21237.1	20.30
270.53636	2866.6	2.74
276.00997	2933.4	2.80
300.18977	3126.0	2.99
315.08338	2738.2	2.62
320.77721	2639.9	2.52
349.18668	5131.8	4.91
350.17025	23446.4	22.42
361.79334	2749.9	2.63
367.19437	6247.0	5.97



NL: 4.44E6
 Pbistriata#2311 RT: 5.44
 AV: 1 T: FTMS + p ESI Full
 ms [100.0000-1500.0000]

NL: 1.03E5
 Pbistriata#2269-2371 RT:
 5.45-5.47 AV: 2 F: FTMS +
 p ESI d Full ms2
 367.1973@hcd35.00
 [50.0000-390.0000]